

BRUSH CUTTERS

FOR SKID STEERS & COMPACT UTILITY LOADERS



THE LEADER OF THE PACK—ANY WAY YOU CUT IT.

THE LEADER OF THE PACK

any way you cut it.



Brush Wolf Features2
The Brush Wolf Difference.....4

SKID STEER CUTTERS

OPEN-FRONT CUTTERS

ALPHA6
Extreme-Duty Series8
Heavy-Duty Series 10
Standard-Duty Series..... 12
Compact Series 14

CLOSED-FRONT CUTTERS

Multi-Spindle Series..... 16
Heavy-Duty Series 18
Compact Series 20

COMPACT UTILITY LOADER CUTTERS

Open-Front Compact..... 14
Closed-Front Compact 20

CUTTER COMPARISON CHARTS

All Open-Front Cutters 22
All Closed-Front Cutters 24



BUILT FOR LIFE

Experience the most reliable, indestructible hydraulic rotary brush cutters on the market. All Brush Wolf cutters are engineered with advanced features that lead the way in innovative design and development.

POWER + PERFORMANCE

PREMIUM HYDRAULIC MOTORS
Powered by a high-performance radial piston motor with a robust bearing housing OR a Geroler-style hydraulic motor paired with a right-angle gearbox for ultimate efficiency.



BLADE ACCESS COVER
Direct access to the blade bolts through the blade access cover makes replacing blades quick and hassle-free.

SAFETY STEPS
Non-slip, serrated metal steps ensure safe and easy in and out.

HOOD / MOTOR GUARD
The motor guard/hood is crafted from durable 12-gauge steel and is hinged for effortless motor access.

PARTS ALWAYS AVAILABLE
Genuine OEM parts are always available on our online parts store.

GEARBOX SEAL PROTECTION
Welded collar around the gearbox seal prevents wire from damaging the gearbox.

BEST BUILD QUALITY ON THE MARKET
Our frames are continuously welded across each seam for added strength and powder-coated to prevent rust and scratches.



CLEAN DECK DESIGN
Each deck is crafted from a single piece of ultra-durable steel. The "clean deck" design allows material to glide off during operation preventing unwanted buildup of debris.

LIFT LIMIT CHAIN
The added safety chain prevents the cutter from being lifted too high. (On selected models.)

PLUG + PLAY READY
Ready to shred brush upon delivery with quick-connect couplers, hydraulic hoses encased in protective wrap, and dust caps.

UNIVERSAL QUICK ATTACH SYSTEM
Our universal pick-up plates attach quickly to any operating machine.

LONG-LASTING BLADES
Our high-tempered, industrial-strength steel blades are heat treated, have a milled edge, and are Supertuf coated to stand the test of time.



BLADE CARRIER
Ultra-smooth, CNC-balanced blade carriers prevent unnecessary vibration.

ULTRA-RUGGED DECK FRAME
We added boxed-in gusset reinforcements, extra bracing, and supports to make our cutters crazy strong.



CUSTOMER SERVICE + SUPPORT
The customer is always KING. We're with you every step of the way with unlimited support.

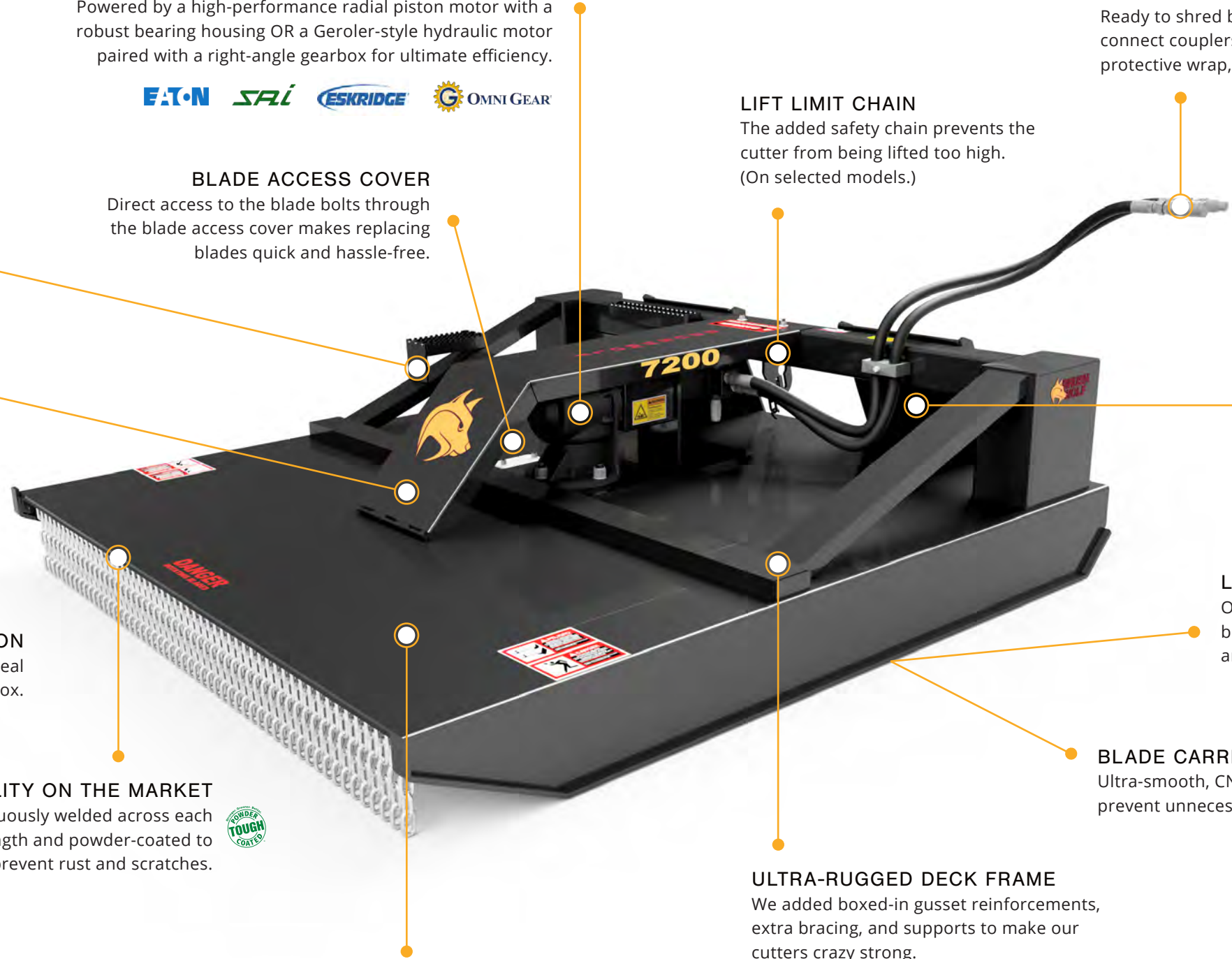




Photo by customer JL Landworx

WE DO ONE THING—AND WE DO IT WELL.

At Brush Wolf, we're masters of our craft, focusing solely on perfection. Our indestructible hydraulic rotary brush cutters are built tough to conquer rough terrain and thrive in the harshest environments. With a legacy that spans over two decades, we've been the pioneers of the rotary brush-cutting industry, setting the standard for innovation.

We're proud to make, design, fabricate, assemble, powder coat, and test every cutter under one roof in Crosslake, Minnesota.

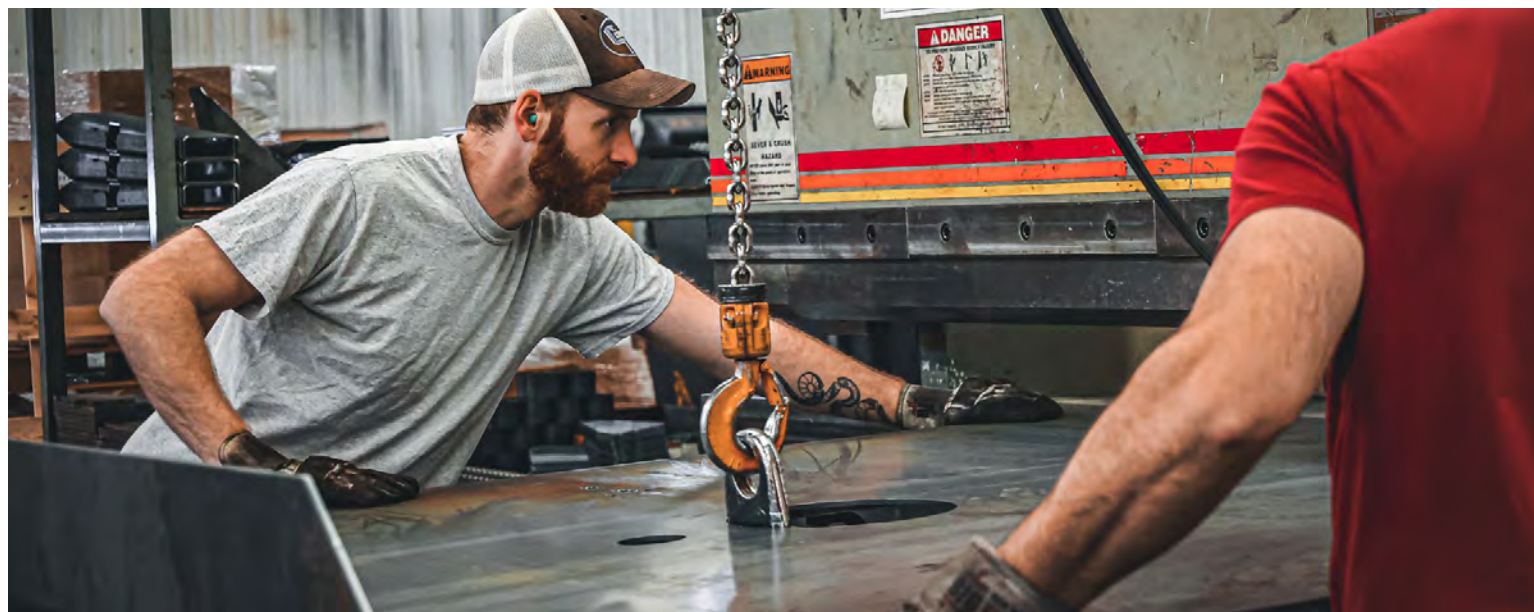


WHY OUR CUTTERS LAST LONGER

Our cutters are built to last, crafted from a single piece of ultra-rugged steel that is fully boxed and continuously welded. This meticulous construction ensures unparalleled durability. Additionally, our unique powder coating process further enhances their longevity, setting our cutters apart from the rest.



SSAB



OPEN-FRONT
ALPHA

We beefed up the direct-drive piston motor and paired it with a massive 3.25" shaft diameter bearing housing for extreme cutting power. The unique "v-notch" design delivers a closer cut and operator precision when leveling trees and saplings. And by trees, we mean 10" thick trees. We then demanded the most robust blade carrier system on the market (there are two to choose from), so you'll get the performance and power to master the toughest, most demanding jobs.



"PROBABLY SELL MY FORESTRY MULCHER NOW! 10" TREE IS NOTHING FOR THIS THING ON HIGH FLOW!"

— Richard Senn
ALPHA Owner



MOTOR TYPE

SAI® radial piston hydraulic motor

DRIVE TYPE

Direct drive

BEARING HOUSING SHAFT

Eskridge® bearing housing with 2.625" shaft diameter

MOTOR PROTECTION

Pressure relief valves, case drain

MAX PSI (CONT./INT.)

3,000/4,100



DECK THICKNESS

1/4 in

HOOD/MOTOR GUARD

12-ga vented hood

PUSH BAR

Fully-supported serrated push bar with teeth

HOSES + DUST CAPS

114" hydraulic hoses encased in protective wrap and guarded with extreme-duty spiral hose wrap, quick-connect couplers, and dust caps included



BLADE CARRIER & BLADES OPTION

Standard 3-Blade Carrier

1" GRD-50 disc with 3 heat-treated, Supertuf coated drop-down blades; non-updraft to cut and discharge material quickly

Optional 4-Blade Carrier

Two-piece 5/8" thick steel discs with 4 Hardox® 500 flat blades; non-updraft to cut and discharge material quickly

BLADE ROTATION

Counterclockwise



3-BLADE CARRIER
STANDARD



4-BLADE CARRIER
OPTIONAL



MODEL OPTIONS

	ALPHA HD 3-Blades	ALPHA XP 3-Blades	ALPHA HD 4-Blades	ALPHA XP 4-Blades
Cutting Width	72 in	72 in	72 in	72 in
Hydraulic Flow (GPM)	23-32	33-45	23-32	33-45
Max Cutting Diameter	10 in	10 in	10 in	10 in
Tip Speed (ft/min)	10,300- 14,300	13,200- 18,000	10,300- 14,300	13,200- 18,000
Weight	2,320 lbs	2,320 lbs	2,570 lbs	2,570 lbs

Full specs are listed on page 22.

OPEN-FRONT
EXTREME-DUTY SERIES 72/O | 78/O

A true workhorse built tough for industrial and commercial applications. You can rely on these cutters to consistently tackle heavy brush and trees up to 8" in diameter. The unique open front "v-notch" design allows for increased operator precision cutting of trees and saplings. Tip speed and torque are optimum for efficient cutting with a massive 1" blade carrier and three high-tempered steel drop blades.



"WE JUST LOVE HOW YOUR EQUIPMENT HOLDS UP TO THE HARSH CLIMATE AND UNFORGIVING TERRAIN."

— Mark of Matanuska-Susitna Borough Operations & Maintenance in Palmer, Alaska



MOTOR TYPE

SAI® radial piston hydraulic motor

DRIVE TYPE

Direct drive

BEARING HOUSING SHAFT

Eskridge® bearing housing with 2.625" shaft diameter

MOTOR PROTECTION

Pressure relief valves, case drain

MAX PSI (CONT./INT.)

4,000



DECK THICKNESS

1/4 in

HOOD/MOTOR GUARD

12-ga vented hood

HOSES + DUST CAPS

114" hydraulic hoses encased in protective wrap, quick-connect couplers, and dust caps included



BLADES

3 heat-treated, Supertuf coated drop-down blades; non-updraft to cut and discharge material quickly

BLADE CARRIER

1" GRD-50 disc

BLADE ROTATION

Counterclockwise



MODEL OPTIONS

	72 HD/O	72 XP/O	78 HD/O	78 XP/O
Cutting Width	72 in	72 in	78 in	78 in
Hydraulic Flow (GPM)	23-29	30-40	23-29	30-40
Max Cutting Diameter	8 in	8 in	8 in	8 in
Tip Speed (ft/min)	10,300-13,000	13,000-16,000	11,100-14,000	13,000-17,300
Weight	1,490 lbs	1,490 lbs	1,610 lbs	1,610 lbs

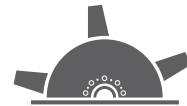
Full specs are listed on page 22.

OPEN-FRONT
HEAVY-DUTY SERIES 6601 | 7201 | 7801

Our open-front cutters thrive in harsh environments thanks to the exposed high-tempered steel blades that blast through thick brush. The unique open front design lets you selectively cut vegetation before deck contact and then discharge the debris quickly to accelerate your job completions. The field-proven combination of the easy-to-maintain hydraulic motor and 65HP right-angle gearbox speeds up the rotation to achieve the highest torque possible while maintaining a proven tip speed.

"AS ALWAYS BRUSH WOLF LIVED UP TO ITS NAME & REPUTATION!! WE ARE VERY PLEASED!!!"

— Ellis Smallwood,
 Owner of Smallwood's Land Management LLC



MOTOR TYPE
 Eaton® Geroler-style hydraulic motor

DRIVE TYPE
 Right-angle Omni Gear® gearbox

MOTOR PROTECTION
 Pressure relief valves, GRD-2 shear bolt

MAX PSI (CONT./INT.)
 3,000/3,500

DECK THICKNESS
 1/4 in

HOOD/MOTOR GUARD
 12-ga hinged motor guard

CHAIN CURTAIN
 Rear 5/16" replaceable chains

HOSES + DUST CAPS
 78" hydraulic hoses encased in protective wrap, quick-connect couplers, and dust caps included

BLADES
 2 heat-treated, Supertuf coated drop-down blades

BLADE CARRIER
 5/16" GRD-50 spun-formed pan stump jumper

BLADE ROTATION
 Counterclockwise

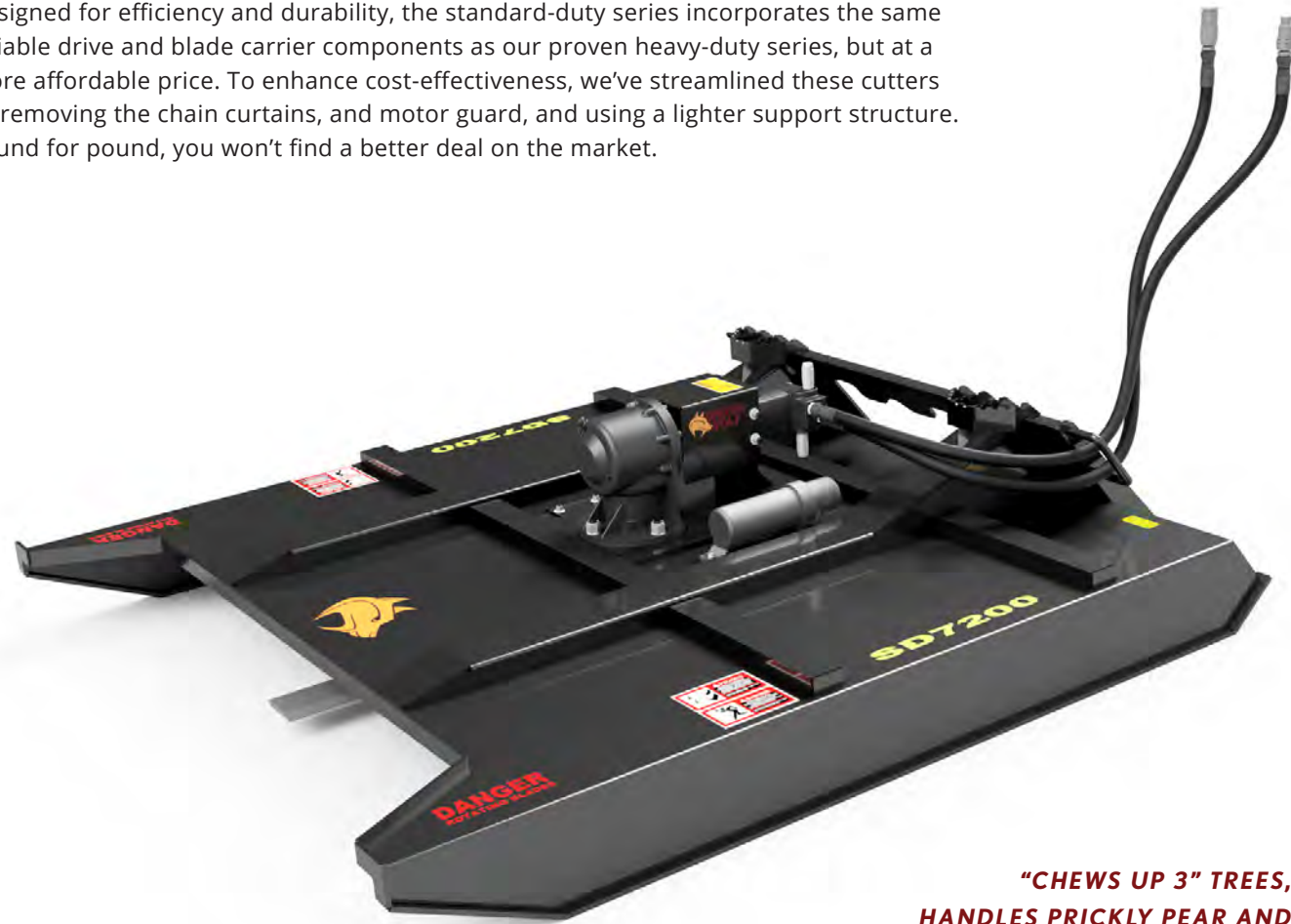
MODEL OPTIONS

	6601 LF	6601 SF	7201 LF	7201 SF	7201 LF	7801 SF	7801 HF
Cutting Width	66 in	66 in	72 in	72 in	72 in	78 in	78 in
Hydraulic Flow (GPM)	10-15	16-25	15-25	21-25	26-40	20-25	26-40
Max Cutting Diameter	3 in	4 in	3 in	4 in	5 in	4 in	5 in
Tip Speed (ft/min)	8,000-12,000	11,200-17,500	13,000-17,400	13,800-17,400	11,500-17,600	15,000-17,800	12,500-19,200
Weight	1,124 lbs	1,124 lbs	1,220 lbs	1,220 lbs	1,270 lbs	1,310 lbs	1,390 lbs

Full specs are listed on page 22.

OPEN-FRONT
STANDARD-DUTY SERIES SD6000 | SD7200

Designed for efficiency and durability, the standard-duty series incorporates the same reliable drive and blade carrier components as our proven heavy-duty series, but at a more affordable price. To enhance cost-effectiveness, we've streamlined these cutters by removing the chain curtains, and motor guard, and using a lighter support structure. Pound for pound, you won't find a better deal on the market.



**"CHEWS UP 3" TREES,
 HANDLES PRICKLY PEAR AND
 MULCHES IT ALL. EXCELLENT FOR
 ELECTRIC FENCE LINE."**

— Max, Brush Wolf owner from Texas



MOTOR TYPE

Eaton® Geroler-style hydraulic motor

DRIVE TYPE

Right-angle Omni Gear® gearbox

MOTOR PROTECTION

Pressure relief valves, GRD-2 shear bolt

MAX PSI (CONT./INT.)

3,000/3,500



DECK THICKNESS

1/4 in

HOSES + DUST CAPS

78" hydraulic hoses encased in protective wrap, quick-connect couplers, and dust caps included



BLADES

2 heat-treated, Supertuf coated drop-down blades; non-updraft to cut and discharge material quickly

BLADE CARRIER

5/16" GRD-50 spun-formed pan stump jumper

BLADE ROTATION

Counterclockwise

MODEL OPTIONS

	SD6000 LF	SD6000	SD7200 LF	SD7200
Cutting Width	60 in	60 in	72 in	72 in
Hydraulic Flow (GPM)	10-15	16-25	15-20	21-25
Max Cutting Diameter	3 in	4 in	3 in	4 in
Tip Speed (ft/min)	9,300-14,000	11,500-18,000	13,000-17,400	13,800-17,400
Weight	840 lbs	830 lbs	1,000 lbs	1,000 lbs

Full specs are listed on page 22.

OPEN-FRONT
COMPACT SERIES 4201 | 4801

Don't let the size fool you; these mighty cutters may be small, but they pack all the power and performance of their larger counterparts. Designed to fit through tight spaces, they are versatile enough to be used anywhere. The 4201 is built to fit all compact utility loaders such as Vermeer, Toro Dingo, Ditch Witch, Bobcat MT-50, and others. The 4801 is compatible with compact utility loaders ranging from small to full-size skid loaders, thanks to its various pickup plate options.



UNIVERSAL MINI PICKUP PLATE



UNIVERSAL STANDARD PICKUP PLATE



MOTOR TYPE

Eaton® Geroler-style hydraulic motor

DRIVE TYPE

Right-angle Omni Gear® gearbox

MOTOR PROTECTION

Pressure relief valves, GRD-2 shear bolt

MAX PSI (CONT./INT.)

3,000/3,500



DECK THICKNESS

4201: 10-ga | 4801: 7-ga

HOOD/MOTOR GUARD

12-ga hinged motor guard

CHAIN CURTAIN

Rear

HOSES + DUST CAPS

Hydraulic hoses encased in protective wrap, quick-connect couplers, and dust caps included



BLADES

2 heat-treated, Supertuf coated drop-down blades; updraft for lift and mulching action

BLADE CARRIER

1" GRD-50 bar

BLADE ROTATION

Counterclockwise



**THE ONLY MINI SKID STEER
 BRUSH MOWER AGGRESSIVE
 ENOUGH TO CLEAN UP
 OVERGROWN BRUSH.**

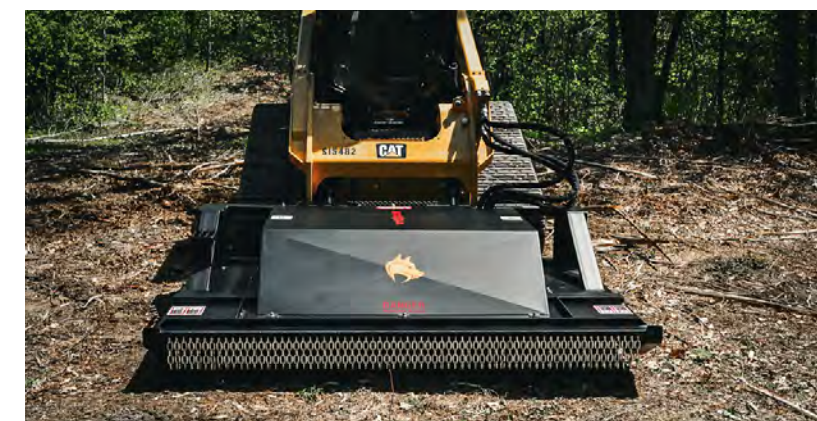
MODEL OPTIONS

	4201	4801 LF	4801 SF
Cutting Width	42 in	48 in	48 in
Hydraulic Flow (GPM)	8-20	8-15	16-25
Max Cutting Diameter	2 in	3 in	3 in
Tip Speed (ft/min)	6,500-16,200	7,500-14,000	11,750-18,400
Weight	470 lbs	672 lbs	690 lbs

Full specs are listed on page 22.

CLOSED-FRONT
MULTI-SPINDLE SERIES 9000

The almighty 9000 can cut more in a single pass than any other rotary brush cutter. These extra wide machines provide a whopping 7.5 feet of complete cutting coverage, leaving no ground untouched. The multi-spindle design utilizes two separate motor/gearbox drive assemblies to power four high-strength tempered steel blades to quickly clear large tracts of land. One trip down the trail, and you're done!



MOTOR TYPE

Eaton® Geroler-style hydraulic motor

DRIVE TYPE

Right-angle Omni Gear® gearbox

MOTOR PROTECTION

Pressure relief valves, GRD-2 shear bolt

MAX PSI (CONT./INT.)

3,000/3,500



DECK THICKNESS

1/4 in

HOOD/MOTOR GUARD

12-ga motor guard

CHAIN CURTAIN

Front and rear 5/16" replaceable chains

HOSES + DUST CAPS

90" hydraulic hoses encased in protective wrap, quick-connect couplers, and dust caps included



BLADES

4 heat-treated, Supertuf coated drop-down blades; updraft for lift and mulching action

BLADE CARRIER

2 1" GRD-50 discs

BLADE ROTATION

Counterclockwise

"THE 9000...REALLY HAS NO COMPETITION."

— caninecombatives, via Instagram

MODEL OPTIONS

	9000 SF	9000 HF
Cutting Width	90 in	90 in
Hydraulic Flow (GPM)	20-25	26-40
Max Cutting Diameter	4 in	5 in
Tip Speed (ft/min)	14,200-17,800	9,600-14,800
Weight	1,790 lbs	1,840 lbs

Full specs are listed on page 24.

CLOSED-FRONT

HEAVY-DUTY SERIES 6000 | 6600 | 7200 | 7800

Think simplistic design and rugged construction with ease of use, low service cost, and reliability built-in. That's why these cutters have remained so popular and virtually unchanged for over twenty years. You'll receive exceptional performance because each model has been engineered with the top-of-the-line Geroler-style hydraulic motor and right-angle gearbox to optimize the full capacity of your operating equipment.



**"STILL GOING STRONG
...THEY'RE NOT JOKING
WHEN THEY SAY BUILT TO LAST.
MY CUTTER CUTS AS GOOD AS IT DID
WHEN I FIRST BOUGHT IT...20 YEARS AGO!"**
— Doug Young, farmer and land developer, MN



MOTOR TYPE

Eaton® Geroler-style hydraulic motor

DRIVE TYPE

Right-angle Omni Gear® gearbox

MOTOR PROTECTION

Pressure relief valves, GRD-2 shear bolt

MAX PSI (CONT./INT.)

3,000/3,500



DECK THICKNESS

1/4 in

HOOD/MOTOR GUARD

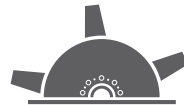
12-ga hinged motor guard

CHAIN CURTAIN

Front and rear 5/16" replaceable chains

HOSES + DUST CAPS

78" hydraulic hoses encased in protective wrap, quick-connect couplers, and dust caps included



BLADES

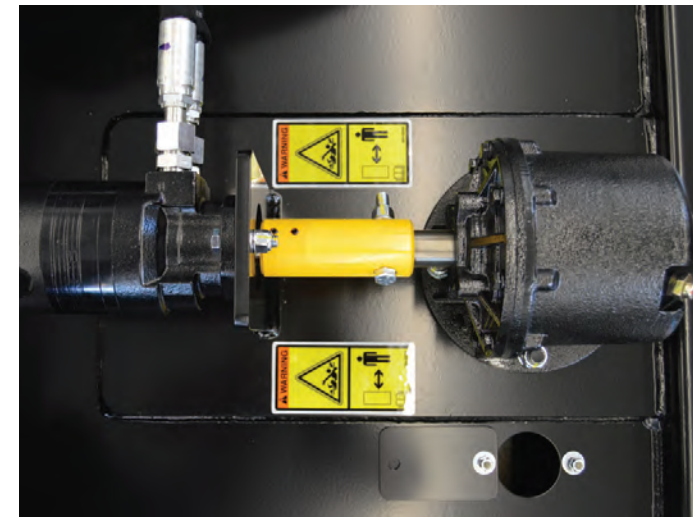
2 heat-treated, Supertuf coated drop-down blades; updraft for lift and mulching action

BLADE CARRIER

5/16" GRD-50 spun-formed pan stump jumper

BLADE ROTATION

Counterclockwise



	MODEL OPTIONS									
	6000 LF	6000 SF	6600 LF	6600 SF	7200 LF	7200 SF	7200 HF	7800 SF	7800 HF	
Cutting Width	60 in	60 in	66 in	66 in	72 in	72 in	72 in	78 in	78 in	
Hydraulic Flow (GPM)	10-15	16-25	10-15	16-25	15-20	21-25	26-40	20-25	26-40	
Max Cutting Diameter	3 in	4 in	3 in	4 in	3 in	4 in	5 in	4 in	5 in	
Tip Speed (ft/min)	9,300-14,000	11,500-18,000	8,000-12,000	11,200-17,500	13,000-17,400	13,800-17,400	11,500-17,600	15,000-17,800	12,500-19,200	
Weight	950 lbs	950 lbs	1050 lbs	1050 lbs	1,160 lbs	1,160 lbs	1,210 lbs	1,280 lbs	1,340 lbs	

Full specs are listed on page 24.

CLOSED-FRONT
COMPACT SERIES 4200 | 4800

Upgrade your mini compact utility loader into a formidable cutting powerhouse with the Brush Wolf compact cutter. Engineered for agility, these powerful cutters effortlessly navigate tight spaces. The 4200 model is compatible with compact utility loaders such as Vermeer, Toro Dingo, Ditch Witch, Bobcat MT-50, and others. The 4800 model is versatile, fitting both compact utility loaders and full-size skid loaders, with various pickup plate options available.



MOTOR TYPE

Eaton® Geroler-style hydraulic motor

DRIVE TYPE

Right-angle Omni Gear® gearbox

MOTOR PROTECTION

Pressure relief valves, GRD-2 shear bolt

MAX PSI (CONT./INT.)

3,000/3,500



DECK THICKNESS

4200: 10-ga | 4800: 7-ga

HOOD/MOTOR GUARD

12-ga hinged motor guard

CHAIN CURTAIN

Front and rear 5/16" replaceable chains

HOSES + DUST CAPS

Hydraulic hoses encased in protective wrap, quick-connect couplers, and dust caps included



BLADES

2 heat-treated, Supertuf coated drop-down blades; updraft for lift and mulching action

BLADE CARRIER

1" GRD-50 bar

BLADE ROTATION

Counterclockwise



"THE BRUSH WOLF 4200 IS JUST THE TICKET IF YOU NEED TO TAKE CARE OF SOME OVERWHELMINGLY OVERGROWN AREAS."

— Richey & Clapper, Inc.
 Outdoor Power Equipment, Sudbury, MA

	MODEL OPTIONS		
	4200	4800 LF	4800 SF
Cutting Width	42 in	48 in	48 in
Hydraulic Flow (GPM)	8-20	8-15	16-25
Max Cutting Diameter	2 in	3 in	3 in
Tip Speed (ft/min)	6,500-16,200	7,500-14,000	11,750-18,400
Weight	470 lbs	672 lbs	690 lbs

Full specs are listed on page 24.

OPEN-FRONT CUTTERS

FOR SKID STEERS & COMPACT UTILITY LOADERS

PRODUCT SPECIFICATIONS



	COMPACT SERIES			STANDARD-DUTY SERIES				HEAVY-DUTY SERIES		
	4201	4801 LF	4801 SF	SD6000 LF	SD6000	SD7200 LF	SD7200	6601 LF	6601 SF	7201 LF
Hydraulic Flow (GPM)	8-20	8-15	16-25	10-15	16-25	15-20	21-25	10-15	16-25	15-20
Tip Speed (ft/min)	6,500-16,200	7,500-14,000	11,750-18,400	9,300-14,000	11,500-18,000	13,000-17,400	13,800-17,400	8,000-12,000	11,200-17,500	13,000-17,400
Max Cutting Diameter	2 in	3 in	4 in	3 in	4 in	3 in	4 in	3 in	4 in	3 in
Cutting Width	42 in	48 in		60 in		72 in		66 in		72 in
Weight	470 lbs	672 lbs	690 lbs	840 lbs	830 lbs	1,000 lbs		1,124 lbs		1,220 lbs
Overall Width	43.75 in	49.75 in		61.75 in		73.75 in		67.75 in		73.75 in
Overall Length	58.25 in	60 in		72.25 in		84.25 in		78.25 in		84.25 in
Blades	(2) 14.75 X 4 X 0.5 in; updraft			(2) 22 X 4 X 0.5 in non-updraft		(2) 28 X 4 X 0.5 in non-updraft		(2) 25 x 4 x 0.5 in updraft		(2) 28 x 4 x 0.5 in
Chain Curtain(s)	Rear			—				Rear		
Hood/Motor Guard	12-ga hinged motor guard			—				12-ga hinged, motor guard		
Max PSI (cont./int.)	3,000/3,500									
Blade Carrier Type	1" GRD-50 bar			5/16" GRD-50 spun-formed pan						
Motor Type	Eaton® Geroler-style hydraulic motor									
Drive Type	Right-angle gearbox									
Bearing Housing Shaft	—									
Motor Protection	Pressure relief valves, GRD-2 shear bolt									
Deck Thickness	10-ga (.135 in)	7-ga (.188 in)		1/4 in						
Hoses & Dust Caps	66" w/ wrap, caps	78" hoses w/ protective wrap, dust caps								
Warranty	5-year limited warranty: structural components, materials, and weldment 1.5-year limited warranty: motor, gearbox, and bearing housing									

	HEAVY-DUTY SERIES				EXTREME-DUTY SERIES				ALPHA			
	7201 SF	7201 HF	7801 SF	7801 HF	72 HD/O	72 XP/O	78 HD/O	78 XP/O	ALPHA HD 3-Blades	ALPHA XP 3-Blades	ALPHA HD 4-Blades	ALPHA XP 4-Blades
	21-25	26-40	20-25	26-40	23-29	30-40	23-29	30-40	23-32	33-45	23-32	33-45
	13,800-17,400	11,500-17,600	15,000-17,800	12,500-19,200	10,300-13,000	13,000-16,000	11,100-14,000	13,000-17,300	10,300-14,300	13,200-18,000	10,300-14,300	13,200-18,000
	4 in	5 in	4 in	5 in	8 in				10 in			
	72 in	72 in	78 in		72 in		78 in		72 in			
	1,220 lbs	1,270 lbs	1,310 lbs	1,390 lbs	1,490 lbs		1,610 lbs		2,320 lbs		2,570 lbs	
	73.75 in	73.75 in	79.75 in		75.25 in		81.25 in		75.25 in			
	84.25 in	84.25 in	90.25 in		72 in		78 in		82 in			
	(2) 28 x 4 x 0.5 in non-updraft		(2) 31 x 4 x 0.5 in updraft		(3) 25 x 4 x 0.5 in non-updraft		(3) 28 x 4 x 0.5 in non-updraft		(3) 18 x 5 x 0.625 non-updraft drop-blades		(4) 18 x 8.5 x 0.625 Hardox® 500 non-updraft flat-blades	
	Rear				—							
	12-ga hinged, motor guard				12-ga vented hood							
	3,000/3,500				4,000				3,000/4,100			
	5/16" GRD-50 spun-formed pan				1" GRD-50 disc				Two-piece 5/8" steel discs			
	Eaton® Geroler-style hydraulic motor				SAI® radial piston hydraulic motor							
	Right-angle gearbox				Direct drive							
	—				Eskridge® bearing housing with 2.625" shaft diameter							
	Pressure relief valves, GRD-2 shear bolt				Pressure relief valves, case drain							
	1/4 in											
	78" hoses w/ protective wrap, dust caps				114" hoses with protective wrap, dust caps							
	5-year limited warranty: structural components, materials, and weldment 1.5-year limited warranty: motor, gearbox, and bearing housing											

CLOSED-FRONT CUTTERS

FOR SKID STEERS & COMPACT UTILITY LOADERS

PRODUCT SPECIFICATIONS



	COMPACT SERIES			HEAVY-DUTY SERIES				
	4200	4800 LF	4800 SF	6000 LF	6000 SF	6600 LF	6600 SF	
Hydraulic Flow (GPM)	8-20	8-15	16-25	10-15	16-25	10-15	16-25	
Tip Speed (ft/min)	6,500-16,200	7,500-14,000	11,750-18,400	9,300-14,000	11,500-18,000	8,000-12,000	11,200-17,500	
Max Cutting Diameter	2 in	3 in	4 in	3 in	4 in	3 in	4 in	
Cutting Width	42 in	48 in		60 in		66 in		
Weight	470 lbs	672 lbs	690 lbs	950 lbs		1,050 lbs		
Overall Width	43.75 in	49.75 in		61.75 in				
Overall Length	58.25 in	60 in		72.25 in		78.25 in		
Blades	(2) 14.75 X 4 X 0.5 in; updraft			(2) 22 X 4 X 0.5 in; updraft				
Chain Curtain(s)	Front; rear							
Hood/Motor Guard	12-ga hinged motor guard							
Max PSI (cont./int.)	3,000/3,500							
Blade Carrier Type	1" GRD-50 bar			5/16" GRD-50 spun-formed pan				
Motor Type	Eaton® Geroler-style hydraulic motor							
Drive Type	Right-angle gearbox							
Bearing Housing Shaft	—							
Motor Protection	Pressure relief valves, GRD-2 shear bolt							
Deck Thickness	10-ga (.135 in)	7-ga (.188 in)		1/4 in				
Hoses & Dust Caps	66" hoses w/ wrap, caps	78" hoses w/ protective wrap, dust caps						
Warranty	5-year limited warranty: structural components, materials, and weldment 1.5-year limited warranty: motor, gearbox, and bearing housing							

	HEAVY-DUTY SERIES					MULTI-SPINDLE SERIES	
	7200 LF	7200 SF	7200 HF	7800 SF	7800 HF	9000 SF	9000 HF
Hydraulic Flow (GPM)	15-20	21-25	26-40	20-25	26-40	20-25	26-40
Tip Speed (ft/min)	13,000-17,400	13,800-17,400	11,500-17,600	15,000-17,800	12,500-19,200	14,200-17,800	9,600-14,800
Max Cutting Diameter	3 in	4 in	5 in	4 in	5 in	4 in	5 in
Cutting Width	72 in		78 in		90 in		
Weight	1,160 lbs		1,210 lbs	1,280 lbs	1,340 lbs	1,790 lbs	1,840 lbs
Overall Width	73.75 in		79.75 in		93.25 in		
Overall Length	84.25 in		90.25 in		78.375 in		
Blades	(2) 28 x 4 x 0.5 in; updraft		(2) 31 x 4 x 0.5 in; updraft		(4) 14.75 x 4 x 0.5 in; updraft		
Chain Curtain(s)	Front; rear						
Hood/Motor Guard	12-ga hinged motor guard					12-ga motor guard	
Max PSI (cont./int.)	3,000/3,500						
Blade Carrier Type	5/16" GRD-50 spun-formed pan					(2) 1" GRD-50 discs	
Motor Type	Eaton® Geroler-style hydraulic motor						
Drive Type	Right-angle gearbox						
Bearing Housing Shaft	—						
Motor Protection	Pressure relief valves, GRD-2 shear bolt						
Deck Thickness	1/4 in						
Hoses & Dust Caps	78" hoses w/ protective wrap, dust caps					90" hoses with protective wrap, dust caps	
Warranty	5-year limited warranty: structural components, materials, and weldment 1.5-year limited warranty: motor, gearbox, and bearing housing						



5 YEAR
LIMITED
WARRANTY

Brush Wolf cutters are built for life, which is why we stand behind each and every one of them with our unmatched 5-year limited warranty.

MADE IN
USA

Everything we make, design, fabricate, assemble, powder coat, and test is proudly done under one roof in Crosslake, Minnesota.



THE LEADER OF THE PACK—ANY WAY YOU CUT IT.
218-692-1050 | sales@brushwolf.com | brushwolf.com