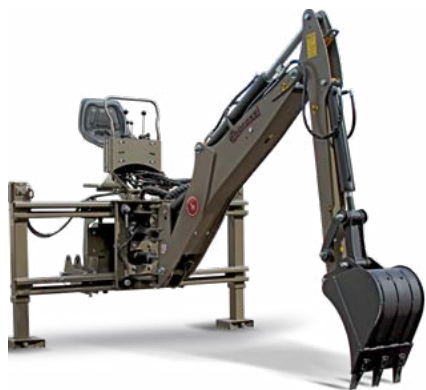


EN

Backhoes / Rear Blade / Hydraulic Cranes



AGRICULTURAL MACHINERY
enorossi



The study and design of a new dimension of machines



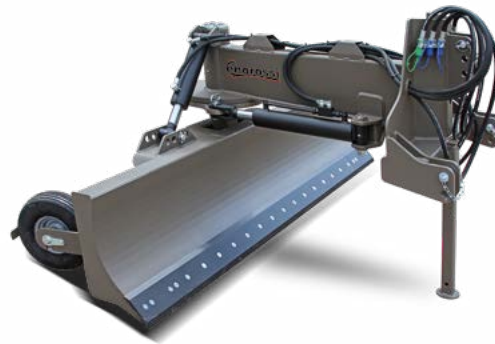
Enorossi machines are extremely reliable and resistant and they ensure maximum profitability to your farm, even in the most difficult and heavy working conditions.

It is thanks to the careful planning, a meticulous selection of the highest quality materials and the use of innovative production technologies that Enorossi meets the needs and trust of the most demanding customers from all over the world.

Your certainty is an Enorossi machine.



BACKHOE



REAR BLADE



HYDRAULIC CRANE



SIDE SHIFT BACKHOES

The Enorossi backhoes are sturdy and with an ergonomic design that optimizes visibility for the operator during work phases.

The compact size helps road transport and simplifies maneuvering operations during work.

Made of high quality steel they can be used for both agricultural and construction works, guaranteeing years of excellent performance even in difficult and exhausting working conditions.

All the components, including the hydraulic ones, are produced in Italy and this ensures maximum reliability in terms of productivity and durability.



EBF

FIXED BACKHOES

Enorossi offers two models of backhoes: the **EBM** series side shift, and the **EBF** series central pivoting. Both models have an excellent adaptability to different operational needs.



EBM SIDE SHIFT BACKHOE



EBF FIXED BACKHOE



CARE AND RESEARCH OF ENROSSI BACKHOES

STURDY DIGGING BUCKETS

Each bucket has bolted teeth that are resistant to wear and to the strain of aggressive excavations.

Buckets available in different widths (from 20, 25, 30, 40, 50, 60, 70 and 80 cm), as well as for channel cleaning (from 600 to 1000mm) and trapezoidal buckets for ditches.

POINT HITCH BAR KIT



The **EBM** and **EBF** backhoes are all linked to the tractor's 3-point hitch to guarantee extreme stability during work. The perforated fixing bar allows you to easily hook the Enorossi backhoes to all tractor models. The coupling and uncoupling operations are simple and very fast. The **EBM** series has as standard the hydraulic locks while the mechanical translation allows the operator to change the excavation area without having to move the tractor.

LEVERS



The hydraulic distributor has 4 control levers; two for moving the digging arm and 2 for moving from the transport position to the working position.

PUMP AND TANK



All our hydraulic distributors are fitted with pressure relief valves that control movements and protect from any overloads or wrong use by the operator during work, thereby safeguarding the machine frame. All **EBM** and **EBF** backhoes have a built-in oil tank so that they don't use the tractor oil.

EBF ROTATION



The **EBF** model is equipped with two hydraulic cylinders mounted on the main support to allow a fast 180° rotation.

SIDE SHIFT



The **EBM** side shift range gives the possibility to reach and change the digging area without moving the tractor making operations quick and easy.

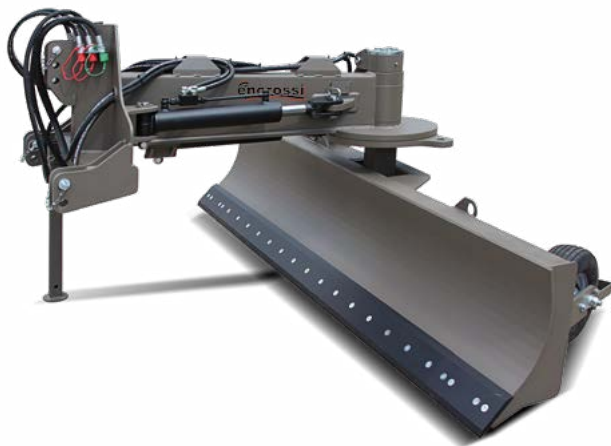
ADJUSTABLE SEAT



The operator's seat can be height adjusted and horizontal adjusted, making it practical and easily accessible.



LBP



REAR BLADE

Rear-mounted blade to be connected to the tractor's hydraulic system, without the need for any additional equipment.

The angle of the blade is easily adjustable from tractor cabin.

Particularly suitable for maintenance operations of farms and ideal for leveling and finishing jobs of various types of land.

The central axis of the blade is made of special hardened steel and equipped with cemented bushes that make the entire unit highly resistant to any type of use.

The 3 movements can be mechanic or hydraulic: TILTDOZER, ANGLEDZER and OFFSET.

CONFIGURATION

REAR BLADE MECHANIC LBP

The unit has all 3 mechanic movements as standard.

REAR BLADE 1 HYDRAULIC MOVEMENT LBP 11

The TILTDOZER and ANGLEDZOZER are mechanic, and the OFFSET is hydraulic and can be operated directly from the tractor's seat.

REAR BLADE 2 HYDRAULIC MOVEMENTS LBP 21

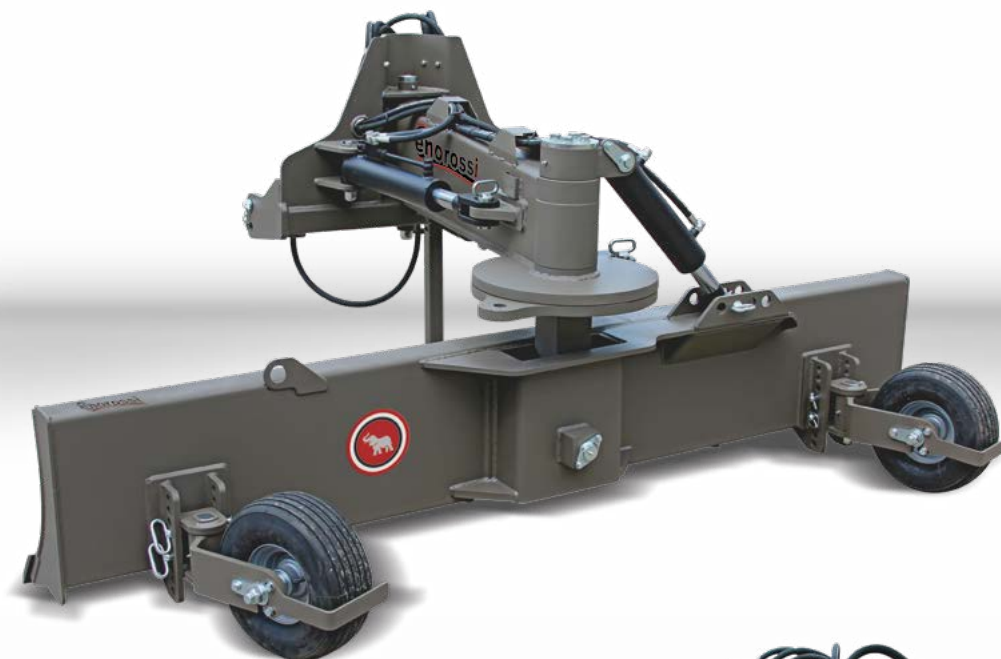
The TILTDOZER and OFFSET are hydraulic, and the ANGLEDZOZER is mechanic.

The tractor must have 2 double effect distributors.

REAR BLADE 3 HYDRAULIC MOVEMENTS LBP 31

The 3 movements TILTDOZER, ANGLEDZOZER and OFFSET are hydraulic.

The tractor must have 3 double effect distributors.





REASONS FOR CHOOSING **ENOROSI BLADES**



The knife of the LBP machines are easily interchangeable and built with a special steel to guarantee a long life.



The tilt dozer can be hydraulic or mechanical depending on the model chosen.

ROTATION PIN



The hinge pin made of hardened steel ensures a strong resistance.

HOSES



The hydraulic hoses are easy to store.

SET OF TIRES



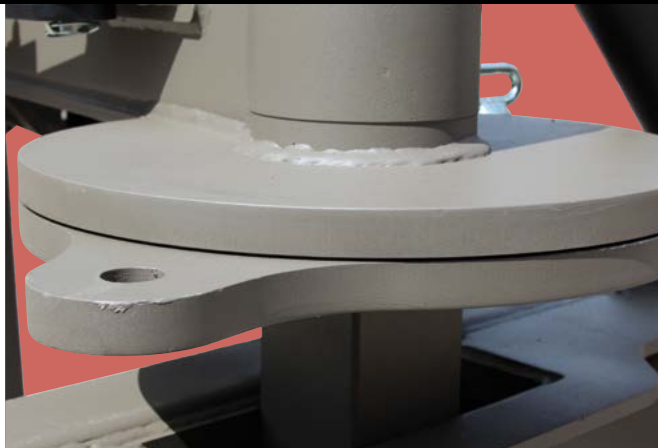
Adjustable leveling wheels. Available on demand.

HYDRAULIC OFFSET



This hydraulic movement allows the operator to position the blade out of the tractor shape directly from the tractor's cabin and therefore to reach limited areas such as ditches and walls.

ROTATION



The rotation with double reinforcement allows great axial strength during angling.

3-POINT HITCH



Reinforced 3-point hitch.

HYDRAULIC CRANE



Universal machine designed for lifting, for the loading of the fertilizer spreader. Suitable for a universal agricultural use, for any type of lifting and moving of material. It is not recommended to use this machine for Big-Bags transport over large distances. Maximum load 1000 Kg.

HYDRAULIC BOOM

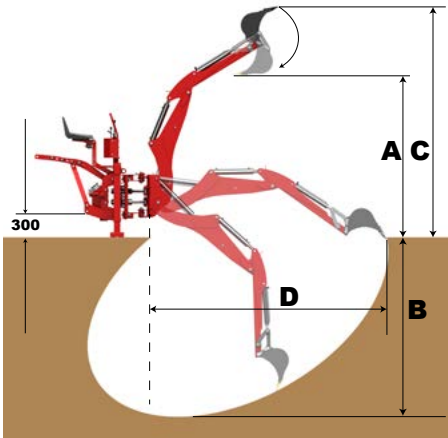


Hydraulic opening of the machine lifting arm. It is very fast for the material loading and unloading, ideal for the most demanding farmers who are looking for a multifunctional machine.



TECHNICAL DATA

TECHNICAL DATA



TECHNICAL FEATURES	FIXED BACKHOES			
	EBF 100	EBF 120	EBF 180	EBF 230
Load height (A) [mm]	940	950	1500	2050
Digging depth (B) [mm]	1190	1220	1800	2300
Maximum height (C) [mm]	1800	1800	2250	2740
Digging width (D) [mm]	1700	1700	2475	2960
Max width [mm]	1950	2250	2250	2600
Breakout force [Kg]	1100	1500	1600	2500
Boom rotation	180°	180°	180°	180°
Pump capacity multiplier [l/m]	13	18	18	26
Operating pressure [bar]	180	180	180	180
Buckets	25/40	25/40	25/41	25/60
Weight with standard bucket	285	345	375	490

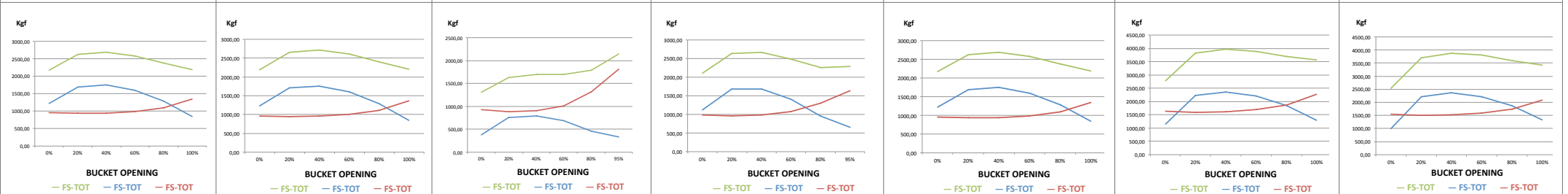
FS-TOT = TOTAL BREAKOUT FORCE / FS-D = BUCKET BREAKOUT FORCE / FS-B = BOOM BREAKOUT FORCE



TECHNICAL FEATURES	REAR BLADE											
	LBP-200	LBP-250	LBP-300	LBP 11-200	LBP 11-250	LBP 11-300	LBP 21-200	LBP 21-250	LBP 21-300	LBP 31-200	LBP 31-250	LBP 31-300
Blade width [mm]	2000	2500	3000	2000	2500	3000	2000	2500	3000	2000	2500	3000
Blade height [mm]	500	500	500	500	500	500	500	500	500	500	500	500
Available power [Hp]	80-100	80-120	80-120	80-100	80-120	80-120	80-100	80-120	80-120	80-100	80-120	80-120
Weight [Kg]	590	635	685	595	640	690	610	655	700	615	660	705
Angle	Mech. 40°	Mech. 40°	Mech. 40°	Mech. 40°	Mech. 40°	Mech. 40°	Hyd. 40°	Hyd. 40°	Hyd. 40°	Hyd. 40°	Hyd. 40°	Hyd. 40°
Beyond profile [mm]	No	No	No	No	No	No	Mech. 600	Mech. 600	Mech. 600	Hyd. 600	Hyd. 600	Hyd. 600
Tilt/Dozer	Mech. 18°	Mech. 18°	Mech. 18°	Hyd. 18°	Hyd. 18°	Hyd. 18°	Hyd. 18°	Hyd. 18°	Hyd. 18°	Hyd. 18°	Hyd. 18°	Hyd. 18°

SIDE SHIFT BACKHOES

EBF 250	EBF 270	EBM 180	EBM 230	EBM 250	EBM 270	EBM 290
2050	2100	1500	2050	2050	2370	2400
2500	2700	1800	2300	2500	2700	2900
2880	2900	2250	2740	2880	3370	3460
3010	3050	2475	2960	3010	3530	3600
2600	2600	1200	1600	1600	2000	2000
2600	2600	1500	2500	2600	3700	3700
180°	180°	180°	180°	180°	180°	180°
26	26	18	26	26	42	42
180	180	180	180	180	180	180
25/60	25/60	25/40	25/60	25/60	30/80	30/80
500	515	395	560	570	780	795



HYDRAULIC CRANE TECHNICAL FEATURES

HYDRAULIC CRANE TECHNICAL FEATURES	BBProfi
Width [mm]	1150
Length [mm]	2130
Length with boom extended [mm]	2900
Overall height from the ground [mm]	2200
Overall height with boom lifted and extended from the ground [mm]	4600
Overall height with boom lifted but not extended from the ground [mm]	3900
Maximum loading capacity [Kg]	1000
Weight [Kg]	350
Minimum operating pressure [Bar]	160
Maximum operating pressure [Bar]	200
Available power [Kw]	90
Hitch category	2°



Via Cortonese, 36
06019 Calzolaro di Umbertide
Perugia - Italy
tel. +39 075 930 22 22
fax +39 075 930 23 28
info@enorossi.it
www.enorossi.it



Your Enorossi dealer:

Enorossi reserves the right to change the technical features and specifications at any time without notice.