



# SPREADERS



[www.bmc-agricola.es](http://www.bmc-agricola.es)





E 6291  
BFR

*B/MC*

KOPA

3000





04

One disc spreader

**ROXY**



06

One disc spreader

**ASPU / ASPU LOC**



08

Pendulum spreaders

**AMP / AIP / AIG / ASG**



10

Pendulum spreaders special for vineyard

**ZAPPA**



12

Twin disc spreaders special for orchard

**LUA**



14

Twin disc spreaders

**SYNTRA**



16

Twin disc spreaders

**ADH / ACH**



18

Twin disc spreaders

**KOPA TOP**



20

Trailed twin disc spreaders

**MEGA**

# ONE DISC SPREADER

SERIE

# ROXY



**WORK WIDTH:**

**3 a 8 m**

MODELS	ROXY-150	ROXY-500
Hopper capacity	60 L	310 L
Height	62 cm	126 cm
Long	155 cm	188 cm
Width	87 cm	105 cm
Weight	40 kg	95 kg



**PAINTED  
HOPPER**

Painted hopper and frame.

**SPREADING  
DISC**

Spreading disc actuated by turning of the wheel.

# ROXY 500



**GEARBOX**



**INSTRUCTION  
MANUAL**





# ONE DISC SPREADER

SERIE

# ASPU



**WORK WIDTH:**  
**6 a 14 m**



MODELS	ASPU-500	ASPU-500 LOC
Hopper capacity	500 L	500 L
Height	140 cm	140 cm
Width	135 cm	135 cm
Weight	68 kg	76 kg



PLASTIC HOPPER

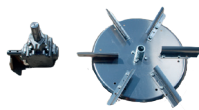
PULVER  
PAINTED

Pulver painted Hopper.

# ASPU LOC



GEARBOX



INSTRUCTION  
MANUAL



## OPTIONAL EQUIPMENT



**TRA-1D**  
Transmission



**AHC-1D**  
Hydraulic opening



# PENDULUM SPREADERS AMP / AIP / AIG / ASG

SERIE

# AIP



# AIG



**WORK WIDTH:**  
**2 a 14 m**



MODELS	AMP-300	AIP-500	AIP-600	AIG-800	AIG-1000	AIG-1200	ASG-1100	ASG-1400	ASG-1650
Hopper capacity	300 L	500 L	600 L	800 L	1000 L	1200 L	1000 L	1200 L	1500 L
Height	110 cm	92 cm	106 cm	98 cm	107 cm	117 cm	108 cm	125 cm	134 cm
Long	123 cm	106 cm	108 cm	134 cm	136 cm	136 cm	165 cm	167 cm	167 cm
Width	123 cm	136 cm	138 cm	188 cm	190 cm	190 cm	188 cm	190 cm	190 cm
Weight	100 kg	106 kg	112 kg	152 kg	158 kg	160 kg	208 kg	214 kg	218 kg

**HIGH GRADE POLYESTER HOPPERS**

Maximum resistance and durability.

**HIGH GRADE PAINTED FRAMES**

High grade painted frames, galvanized option.

**ADJUSTING PENDULUM GEARBOX**

Adjusting pendulum gearbox with stainless discs.

**QUICK HITCH SYSTEM**

ALG and ASG models come with quick hitch system.

**AGITATOR**

Agitator for powder fertilizers.

**PTO. SHAFT**

540 rpm 1 3/8" Z6.

**SCREW FUSE TRANSMISSION**

Screw fuse transmission (security system).

**GEARBOX**



**INSTRUCTION MANUAL**



**OPTIONAL EQUIPMENT**



**AHC**  
Hydraulic opening



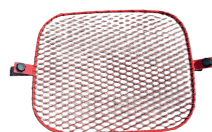
**ACC**  
Powder fertilizer agitator



**IEPEND**  
Light kit



Special spouts



**CRIBA**  
Sieve



**LO-PEND**  
Cover



# PENDULUM SPREADER

*Special for vineyard*

SERIE

# ZAPPA



**WORK WIDTH:**

**2 a 14 m**



MODELS	ZAPPA 600	ZAPPA 800	ZAPPA 1000
Hopper capacity	600 L	800 L	1000 L
Height	97 cm	125 cm	140 cm
Long	140 cm	140 cm	140 cm
Width	112 cm	112 cm	112 cm
Weight	150 kg	170 kg	190 kg

**HIGH GRADE PAINTING**

High grade painted hoppers and frames.

**AGITATOR**

Agitator for powder fertilizers.

**ADJUSTING PENDULUM GEARBOX**

Adjusting pendulum gearbox with stainless discs.

**PTO. SHAFT**

540 rpm 1 3/8" Z6.

**SCREW FUSE TRANSMISSION**

Screw fuse transmission (security system).

# ZAPPA



**GEARBOX**



**INSTRUCTION MANUAL**



**OPTIONAL EQUIPMENT**



**AHC**  
Hydraulic opening



**ACC**  
Powder fertilizer agitator



**IEPEND**  
Light kit



Special spouts



**LO-ZAPPA**  
Cover



**REJONZAPPA**  
Spike kit



# TWIN DISC SPREADER

*Special for orchard*

SERIE

# LUA



**WORK WIDTH:**

**Up 24 m**



MODELS	LUA 800	LUA 1000	LUA 1200
Hopper capacity	800 L	1000 L	1200 L
Height	135 cm	145 cm	155 cm
Long	120 cm	120 cm	120 cm
Width	140 cm	140 cm	140 cm
Weight	260 kg	275 kg	290 kg

**HIGH GRADE PAINTING**

High grade painted hoppers and frames.

**AGITATOR AND INSIDE SCREEN**

**TWIN DISC GEARBOX**

Stainless twin disc gearbox.

**PTO. SHAFT**

540 rpm 1 3/8" Z6.

**HYDRAULIC OPENING**

Independent hydraulic opening.

**GEARBOX**



**INSTRUCTION MANUAL**



**OPTIONAL EQUIPMENT**



**LOC-LUA**  
Fertilizer dual locator



**LOC-LUA**  
Cover



**IESY**  
Light kit



**Sónar**



# TWIN DISC SPREADERS

SERIE

# SYNTRA



**WORK WIDTH:**  
**Up 18 m**



MODELS	SYNTRA 800	SYNTRA 1000	SYNTRA 1200	SYNTRA 1500
Hopper capacity	800 L	1000 L	1200 L	1500 L
Height	120 cm	121 cm	122 cm	123 cm
Long	113 cm	113 cm	113 cm	113 cm
Width	170 cm	180 cm	180 cm	180 cm
Weight	225 kg	240 kg	245 kg	250 kg

**HIGH GRADE PAINTING**

High grade painted hoppers and frames.

**AGITATOR AND INSIDE SCREEN**

**TRANSMISSION**

Free Wheel (security transmission).

**TWIN DISC GEARBOX**

Stainless twin disc gearbox.

**HYDRAULIC OPENING**

Independent hydraulic opening.

**PTO. SHAFT**

540 rpm 1 3/8" Z6.

**GEARBOX**



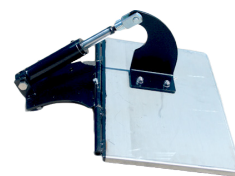
**INSTRUCTION MANUAL**



**OPTIONAL EQUIPMENT**



**LOC-SYNTRA**  
Fertilizer dual locator



**LINDER SY**  
Hydraulic border



**LO-SYNTRA**  
Cover



**IESY**  
Light kit

# TWIN DISC SPREADERS ADH / ACH

SERIE

# ADH



ADH

# ACH



ACH



**WORK WIDTH:**  
**Up 24 m**

MODELS	ADH-1100	ADH-1400	ADH-1650	ACH-1500	ACH-2000	ACH-2500	ACH-3000
Hopper capacity	1000 L	1200 L	1500 L	1500 L	2000 L	2500 L	3000 L
Height	108 cm	125 cm	138 cm	125 cm	140 cm	155 cm	160 cm
Long	165 cm	167 cm	167 cm	153 cm	153 cm	153 cm	153 cm
Width	188 cm	190 cm	190 cm	225 cm	255 cm	255 cm	255 cm
Weight	243 kg	249 kg	253 kg	374 kg	410 kg	428 kg	440 kg



**HOPPER AND FRAME**

Shot blasting and pulver paint  
Oven painted with anticorrosion paint

**ADH HOPPERS**

High grade injection polyester hoppers.

**TWIN DISC GEARBOX**

Stainless twin disc gearbox.

**HYDRAULIC OPENING**

Independent left and right.

**AGITADOR AND INNER SIEVE**

Agitator and inner sieve to avoid the fertilizer blockage

**LIGHT KIT**

**TRANSMISSION**

Free wheel  
(security tranmission).

**PTO. SHAFT**

540 rpm 1 3/8" Z6.

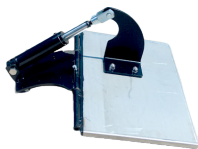
**GEARBOX**



**INSTRUCTION MANUAL**



**OPTIONAL EQUIPMENT**



**LINDER**  
Hydraulic border



**LO-ADH**  
Cover (ADH)



**LO-ACH**  
Folding cover (ACH)



**CE-LDC**  
Fertilizer dual locator



**Sónar**



**ORD-K DPAE ISOBUS** (for tractor with ISOBUS)

# TWIN DISC SPREADERS

SERIE

# KOPA TOP



**WORK WIDTH:**  
**Up 36 m**

AEF Certified

**ISO BUS**

[www.aef-isobus-database.org](http://www.aef-isobus-database.org)



MODELS	KOPA TOP 1500	KOPA TOP 2000	KOPA TOP 2500	KOPA TOP 3000
Hopper capacity	1500 L	2000 L	2500 L	3000 L
Height	140 cm	155 cm	170 cm	185 cm
Disc RPM	720	720	720	720
Width	255 cm	255 cm	255 cm	255 cm
Weight ±	720 kg	735 kg	750 kg	765 kg

**HOPPER AND FRAME**

Shot blasting and pulver paint  
Oven painted with anticorrosion paint

**HORIZONTAL AGITATOR AND INNER SIEVE**

Horizontal agitator and inner sieve to avoid  
the fertilizer blockage

**FOLDING LADDER AND COVER**

Folding ladder and folding cover with security  
system.

**HYDRAULIC OPENING**

Independent left and right

**EMPTYING SYSTEM**

Emptying system for easy cleaning

**RUBBER PARTS BETWEEN THE HOPPER  
EXTENSIONS**

Rubber parts between the hopper extensions to  
avoid the fertilizer cumulation and corrosion

**INCLINOMETER AND LED HEADLIGHTS**

**GEARBOX**



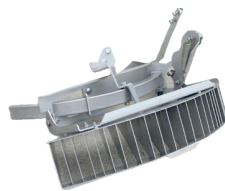
**INSTRUCTION  
MANUAL**



**OPTIONAL EQUIPMENT**



**LINDER-KM**  
Hydraulic border KM



**LINDER-KX**  
Hydraulic border KX



**AD-24**  
Discs 18-24 meters



**ORD-K DPAAE ISOBUS**  
(for tractor with ISOBUS)



**ORD-KP DPAAE with weighting  
system ISOBUS and automatic  
control sections (for tractor with  
ISOBUS)**



**IConnect ISOBUS + screen**  
(conversion to ISOBUS and  
installation not included)



**Cable monitor, GPS antenna**  
(for tractor with ISOBUS)



# TRAILED TWIN DISC SPREADERS

SERIE

# MEGA



**WORK WIDTH:**

**Up 24 m**

MODELS	MEGA 3000	MEGA 6000
Hopper capacity	3000 L	6000 L
Tires	400 / 60-15'5	500 / 50-17
Hopper long	2100 cm	2600 cm
Hopper width	2118 cm	2300 cm

**HOPPERS AND FRAMES**

Hopper and frame with high resistance paint.

**STAINLESS TWIN DISC GEARBOX**

**HYDRAULIC OPENING**

Independent hydraulic opening.

**PTO. SHAFT**

540 rpm 1 3/8" Z6.

**HORIZONTAL AGITADOR AND INSIDE SIEVE**

**SUPPORT AND LADDER**

**BRAKE AND LIGHT KIT**

**TRANSMISSION**

Free Wheel (security transmission).

**GEARBOX**



**INSTRUCTION MANUAL**



**OPTIONAL EQUIPMENT**



**TRA HOMOC**

Homokinetic pto. Shaft



**LO-MEGA**

Cover



**MOTORHID**

Hydraulic motor kit



**LINDER**

Hydraulic border



**ORD-K DP4E ISOBUS**  
(for tractor with ISOBUS)





## FERTILIZER SPECIALIST

**BMC Agrícola S.L.** is a company specialized in the manufacture and distribution of fertilizer spreaders and their components since more than 25 years ago.

We always work to give the best service to our customers, betting on the best quality and the best production processes.

Present on the five continents and in more than 20 countries, **BMC** is committed to the internationalization of its products.

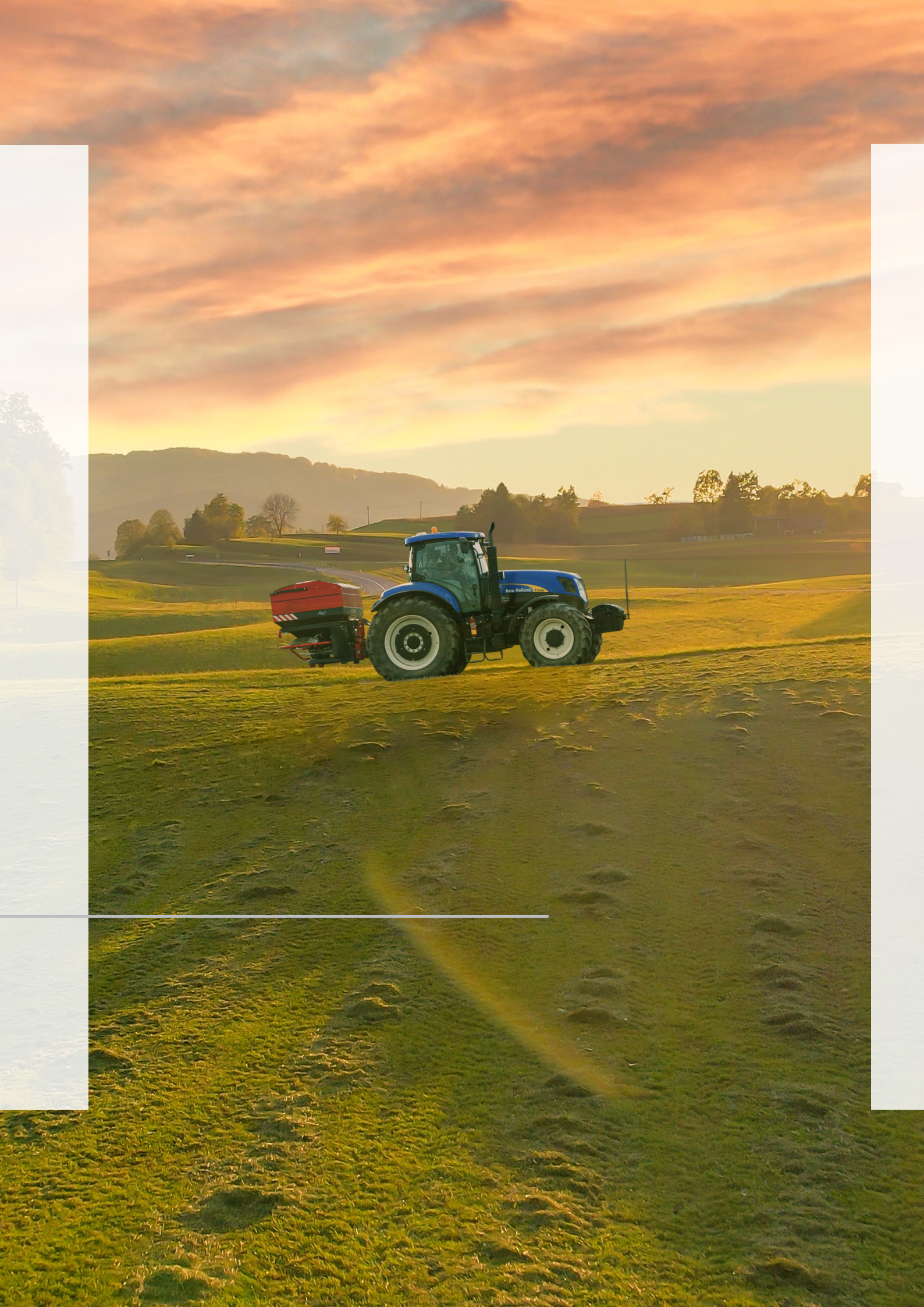
At **BMC** we differentiate ourselves by our specialization, we offer a solution to any fertilization need in the market.

---

**AT BMC WE DO NOT SELL MACHINES, AT BMC  
WE SELL KNOWLEDGE**

---







**THANKS  
FOR TRUSTING US**



**CONTACT US**



[www.bmc-agricola.es](http://www.bmc-agricola.es)