



*By your side, always!*

## AG SPRAYERS

### Pocket Reference Guide

Jacto Inc. - 19217 S.W. 119th Avenue,  
Tualatin, Oregon 97062, USA  
Telephone: (503) 885-8723  
Toll Free: (800) 522-8610  
[www.jacto.com](http://www.jacto.com)



MM1225

# THE JACTO STORY

Humility, Honesty, and Simplicity

In the early 1930's, Shunji Nishimura immigrated to Brazil from Japan to establish a new life in the wake of devastating economic conditions in his home country. Arriving in Brazil, Mr. Nishimura had only the equivalent of \$100US in his pocket and very little knowledge of Portuguese, the language of his adopted country.

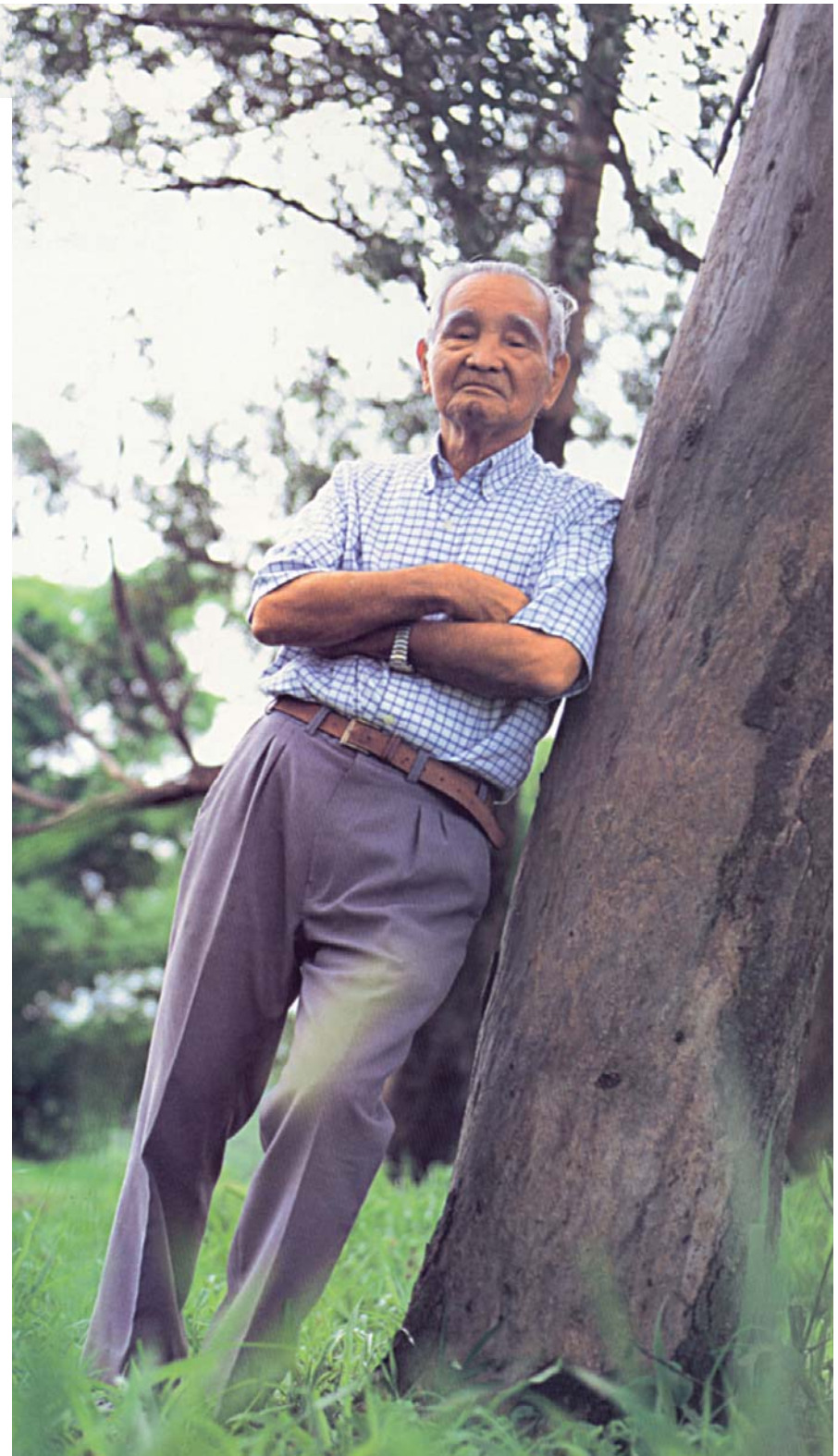
Living in the highly-populated city of São Paulo, Mr. Nishimura worked at various jobs including serving as butler for wealthy Brazilians and harvesting coffee, a highly rigorous hand process back in the 1930's. Later moving to remote Pompéia – because the train tracks extend no farther from São Paulo – Mr. Nishimura opened a fix-it shop where he proved to be of great service to his community. His first “original” products were drinking mugs fashioned from tin cans. He also fixed and repaired anything and everything his customers brought to him.

At one point, he was asked to repair an agricultural “duster” from the USA. Noting that it was designed for the operator to wear on his chest, Mr. Nishimura re-designed the duster for more-comfortable backpack operation. Over time, Mr. Nishimura's dependability and innovative skills caused his neighbors to request that he design and build his own dusters, which he began offering in the late 1940's. Later moving to backpack sprayers made of metal, Mr. Nishimura named this company Jacto and became known for always taking the best care of his customers. Today, Jacto continues the philosophy of our founder: “Never abandon a farmer (or any customer) who is using our equipment.”

Creating robust and highly-efficient backpack sprayers, Mr. Nishimura launched the first of such products made from composite materials. In the 1960's, he sent his son to Germany to bring back equipment for plastic blow molding. Because of heavy taxes in Brazil for importation of such equipment, Mr. Nishimura requested and received a waiver of the tax directly from the country's president. At that point, Jacto launched the world's best backpack sprayers – which continues to this day. That was also the time when Mr. Nishimura made the commitment to “give back” all he could to help to improve the lives of people in his adopted land.

In the span of one man's lifetime, a poor immigrant with a “fix-it” shop established a company that has become a leading equipment provider to the agricultural markets in Brazil and nearly 100 other countries – supplying a variety of state-of-the art backpack, tractor-powered and self-propelled sprayers and related equipment. Today Jacto employs nearly 4,000 people and provides educational support to countless others through the Nishimura Foundation and other schools the company has built and operates in Brazil.

We at Jacto are proud to serve our customers and our customers' communities. When you think about the Jacto brand, consider not only the highly-engineered and innovative products that serve end customers well, but also consider that we care deeply for our social responsibility – and will continually offer products and services to improve the results of our customers and the health of our planet.





## SPRAYER SELECTION GUIDE

1. Type of crop – Will help to determine what type of sprayer to recommend.
2. How many acres are they going to spray? – Consider the tank capacity of the sprayer to determine how many times the tank will have to be filled to complete the spray application. Remember that fill ups take time.
3. Ask for the typical gallon per acre (GPA) they spray. This will determine how many fill ups would be required for every acre sprayed.
4. High application rates above 100 GPA will require a larger pump capacity. When calculating gallons per minute (GPM) of the total nozzles, a minimum of 10% of the pump capacity must return to the tank for agitation. For example, a JP50 pump flows 13 GPM so the total nozzle volume should not exceed 11.7 GPM.
5. Slower tractor speeds when spraying makes for better coverage. In most cases recommend tractor speeds between 1 to 4 MPH.
6. Row spacing? – In some cases the row space is too narrow for larger trailed sprayers. Wide row spacing (16 to 25 feet) would require a large fan to reach the target.
7. Crop height – Tall crops require larger fans to reach the target.
8. Headland – Space at the end of the row to turn the tractor. Narrow headland (16 feet or smaller) may require recommending either a 3-point hitch sprayer or trailed version with tracking axle. A500T, A1000/725, A1000/850 and J1000 are trailed sprayers with tracking axles.
9. Crop density – Dense crops require larger fans to penetrate the foliage.
10. For better coverage on the tops of taller crops, use higher flow rate nozzles on the top portion of the sprayer. Remember larger droplets from high flow rate nozzles will travel further.
11. All Jacto agricultural sprayers use a PTO speed of 540 RPM.
12. Tower sprayer attachments – Ideal for crops like grapes and berries that are typically trellised. The tower nozzle branch and air outlets are vertical which makes the spray pattern more uniform from top to bottom. The Jacto tower uses special baffles so the air flow is equal from top to bottom. Towers are available for the A200, A500, A400/725 and A1000/725 only. Not available for the A400/850 or A1000/850.

## SPRAYER BY CROP GUIDE

CROP				NOTES
	AIRBLAST	CANNON	BOOM	
Almonds & Pistachios	X			Typically A1500 and larger
Apples, Pears, Cherries, Apricots, Plums, Peaches	X			Design of orchard, tree height, spacing and acres will help determine model
Asparagus		X	X	Booms typically used but cannons work well.
Beans and Peas		X	X	Booms typically used but cannons work well.
Blueberries	X	X		Cannon for SWD perimeter sprays and airblast for through the row fungicide and pesticide applications.
Vegetables - Cucumbers, Carrots, etc.		X	X	Booms typically used but cannons work well. Depends on other crops to spray
Chilies and Peppers		X	X	Booms typically used but cannons work well. Depends on other crops to spray.
Christmas Tree	X	X		Cannons work best especially for young trees and Airblasts for large trees
Citrus - Oranges, Lemons, Limes, Grapefruit, etc.	X			Design of orchard, tree height, spacing and acres will help determine model.
Cranberries		X	X	Cannons work well, can also use booms
Fly Control - Dairy, Feedlots		X		Typically AJ401 due to duct able to spray vertical as well as horizontal
Grapes/vineyards/raisin grapes	X			Smaller vineyards, A200-A1000, commercial grapes A1500 and larger
Greenhouse Nursery		X		Typically 3-pt cannon models
Tree nuts - Hazelnuts, Walnuts, Almonds, etc.	X			Typically A1500 and larger
Hops	X			Due to crop height must use 33" fan models, A400-850, A1000-850 or A1500 and larger
Lettuce, Cabbage, Broccoli		X	X	Cannon works well but Air-assist boom is best
Melons		X	X	Cannons typically used, can also use booms
Mustard seed		X	X	Booms typically used but cannons work well. Depends on other crops to spray
Nurseries	X	X		Container nurseries- Cannons, tree nurseries- Airblast, but both can be used in either type of nursery application.
Odor Control - Landfill, Compost Facilities		X		Typically J600CHT or J2000
Olives	X			Typically A400 or larger models
Onions		X	X	Cannon works well but Air-assist boom is best
Potatoes		X	X	Depending on acreage Cannon or Air-assist boom works best
Pumpkins, Squash and Gourds		X	X	Cannons typically used, can also use booms
Raspberries/blackberries/ Marion Berries	X	X		Cannon for SWD perimeter sprays and Airblast for through the row fungicide and pesticide applications.
Strawberries		X	X	Cannons work well, can also use booms
Sugar Beet		X	X	Booms typically used but Cannons work well.
Sweet Corn		X		Most commonly used J400CHT, AJ401, J600CHT
Sweet Potatoes		X	X	Cannon works well but Air-assist boom is best
Tobacco		X		Typically 3-pt Cannon models
Tomatoes		X		Typically 3-pt Cannon models



## A200

Jacto's Arbus 200 airblast sprayer delivers big performance in a small package. Engineered with many of the same features as our biggest sprayers that ensure long life, excellent durability, and maximum crop protection for smaller, specialty growers and for use with low horsepower tractors.

Jacto designed the Arbus 200 to economically meet the demands of a wide variety of crop applications such as orchard, vineyard, berry, nursery, Christmas tree and other fruit applications.

## SPECIFICATIONS

- Tank capacity – 50 Gallons high density poly
  - Fan diameter – 22 Inches
  - Fan performance – 12,065 CFM @ 51 MPH
  - Controls - CJ-42 control valve with manual lever
  - Pump model - JP-42 piston pump 11 GPM
  - Agitation – Bypass with venturi
  - 16 flip-over nozzle holder - 32 total nozzles
  - Nozzles installed - AD-2/AC-25 & AD-4/AC-25
  - Suction filter – FVS-100 with shut off valve (M-60)
  - Maximum row width – 14 feet
  - Minimum row width – 4 feet
  - Maximum crop height – 12 feet
- Minimum tractor engine HP - 18
  - Clean water tank
  - Quick connects for spot spraying
  - Chemical container rinse

## OPTIONS AVAILABLE

- Minitower
- Electric in-cab controls
- Deluxe spot spray gun



## A270

Jacto's Arbus 270 will give you excellent coverage at a very competitive price. Its components are light and chemical resistant; a thick wall high density polyethylene tank, stainless steel nozzle branches, ceramic nozzles, a single three-way control valve with regulator and Jacto ceramic cylinder piston pump are just some of the standard features.

It can be mounted on compact tractors as small as 22 HP to spray a wide variety of crops such as: blueberries, apples, pears, cherries, grapes, plums, vegetable crops, nursery stock, nut trees and Christmas trees.

## SPECIFICATIONS

- Tank capacity – 70 Gallons high density poly
  - Fan diameter – 24 Inches
  - Fan performance – 14,493 CFM @ 83 MPH
  - Controls – Pressure regulator with manual lever
  - Pump model - JP-50 piston pump 13 GPM
  - Agitation – Bypass with venturi
  - 12 flip-over nozzle holder - 24 total nozzles
  - Nozzles installed - AD-2/AC-25 & AD-4/AC-25
  - Suction filter – FVS-100 with shut off valve (M-60)
  - Maximum row width – 18 feet
  - Minimum row width – 4 feet
  - Maximum crop height – 16 feet
- Minimum tractor engine HP – 22
  - Clean water tank
  - Spot spraying compatible
  - Chemical container rinse

## OPTIONS AVAILABLE

- One way volute
- Electric in-cab controls
- Deluxe spot spray gun



## A400/725 VDC

Jacto's Arbus 400/725 VDC is one of our most popular, efficient and easily operated sprayers with low maintenance cost. The A400VDC utilizes our 28-inch diameter fan and provides optimal coverage for grapes, blueberries, cane berries, fruit and nut trees to approximately 18 feet, nursery stock and Christmas trees.

The A400/725 VDC feature a chemical resistant poly tank, stainless steel nozzle branches, ceramic nozzles, a three-way control valve, pressure regulator, by-pass agitation with venturi and cable control. The A400 is the cost-effective choice for small to medium size farms.

## SPECIFICATIONS

- Tank capacity – 105 Gallons high density poly
  - Fan diameter – 28 Inches
  - Fan performance – 21,612 CFM @ 91 MPH
  - Controls – VAR manual cable controls standard
  - Pump model - JP-75 piston pump 20 GPM
  - Agitation – Bypass with venturi
  - 14 flip over nozzle holders - 28 total nozzles
  - Nozzles installed - AD-4/AC-23 & AD-6/AC-23
  - Suction filter – FVS-100 with shut off valve (M-30)
  - Maximum row width – 25 feet
  - Minimum row width – 4 feet
  - Maximum crop height – 18 feet
- Minimum tractor engine HP – 40
  - Clean water tank
  - Spot spray compatible
  - Chemical container rinse

## OPTIONS AVAILABLE

- Minitower
- Electric in-cab controls
- Deluxe spot spray gun

## A400/850 VDC

The A400-850 Golden utilizes our 33 inch two-port fan and is the perfect solution for hops, mature orchards, citrus or tall trees up to 25 feet in height and crops with very dense canopies.



Features a chemical resistant poly tank, stainless steel nozzle branches, ceramic nozzles, a three-way control valve, pressure regulator, by-pass agitation with venturi and cable control. The A400/850 uses the same 33" fan that comes on our larger trailed airblast models.

## SPECIFICATIONS

- Tank capacity – 105 Gallons high density poly
- Fan diameter – 33 Inches
- Fan performance – 30,299 CFM @ 78 MPH
- Controls – VAR manual cable controls standard
- Pump model - JP-75 piston pump 20 GPM
- Agitation – Bypass with venturi
- 24 single nozzle holders with shutoff - 24 total nozzles
- Nozzles installed - 24 AD5/AC25
- Suction filter – FVS-100 with shut off valve (M-30)
- Maximum row width – 25 feet
- Minimum row width – 4 feet
- Maximum crop height – 25 feet
- Minimum tractor engine HP - 55
- Clean water tank
- Spot spray compatible
- Chemical container rinse

## OPTIONS AVAILABLE

- Electric in-cab controls
- Deluxe spot spray gun
- Will not fit "850" models with 33-inch fans

## A500N

Jacto's Arbus 500N airblast sprayer is perfect for grapes, caneberries, blueberries, fruit orchards, nut growers, nursery and Christmas trees.



The A500N is only 43" wide, features a standard clevis hitch, fixed axle and designed for compact tractors as small as 20 HP... perfect for narrow row applications.

Features a high-density poly tank, stainless nozzle branches, ceramic nozzles, Jacto high pressure piston pump, fresh water chemical circuit rinse tank, hand wash tank, cable controls and plumbed for optional handguns.

## SPECIFICATIONS

- Tank capacity – 150 Gallons high density poly
- Fan diameter – 22 Inches
- Fan performance – 11,536 CFM @ 48 MPH
- Controls – VAR manual cable controls standard
- Pump model - JP-50 piston pump 13 GPM
- Agitation – Bypass with venturi
- 16 flip-over nozzle holder - 32 total nozzles
- Nozzles installed - AD-2/AC-25 & AD-4/AC-25
- Suction filter – FVS-100 with shut off valve (M-60)
- Maximum row width – 14 feet
- Minimum row width – 5 feet
- Maximum crop height – 12 feet
- Minimum tractor engine HP - 20
- Chemical circuit rinse & fresh water tanks standard
- Quick connects for spot spraying
- Chemical container rinse

## OPTIONS AVAILABLE

- Minitower
- Electric in-cab controls
- Deluxe spot spray gun

## A500T

Jacto's Arbus 500T airblast sprayer is perfect for grapes, caneberries, blueberries, fruit orchards, nut growers, nursery and Christmas trees and areas where tight turns are needed.



The A500T has a tracking axle and features a "T" bar connection to the tractor lift arms. This action allows the sprayer to follow the track of the tractor without damage to the PTO shaft. Designed for compact tractors as small as 20 HP that are working in tight crop areas. Features are the same as the A500N.

## SPECIFICATIONS

- Tank capacity – 150 Gallons high density poly
- Fan diameter – 22 Inches
- Fan performance – 11,536 CFM @ 48 MPH
- Controls – VAR manual cable controls standard
- Pump model - JP-50 piston pump 13 GPM
- Agitation – Bypass with venturi
- 16 flip-over nozzle holder - 32 total nozzles
- Nozzles installed - AD-2/AC-25 & AD-4/AC-25
- Suction filter – FVS-100 with shut off valve (M-60)
- Maximum row width – 14 feet
- Minimum row width – 5 feet
- Maximum crop height – 12 feet
- Minimum tractor engine HP - 20
- Chemical circuit rinse & fresh water tanks standard
- Quick connects for spot spraying
- Chemical container rinse

## OPTIONS AVAILABLE

- Minitower
- Electric in-cab controls
- Deluxe spot spray gun



# AIRBLAST



## A1000/725

Jacto's Arbus 1000/725 airblast sprayer has a steering axle that allows for tight turns. The "T" bar connection to the lift arms of the tractor actuates a tie rod that turns the trailer wheels, allowing the sprayer to follow the track of the tractor.



The A1000/725 is a versatile sprayer, perfect for orchards, vineyards, nurseries and high bush blueberries.

Features include a fiberglass tank, stainless nozzle branch, ceramic flip-over nozzles, Jacto piston pump, bypass and mechanical agitation and 28" fan.

## SPECIFICATIONS

- Tank capacity – 265 Gallons fiberglass
- Fan diameter – 28 Inches
- Fan performance – 20,553 CFM @ 94 MPH
- Controls – VAR manual cable controls standard
- Pump model - JP-75 piston pump 20 GPM
- Agitation – Mechanical & Bypass
- 18 flip-over nozzle holder - 36 total nozzles
- Nozzles installed - AD-4/AC-23 & AD-6/AC-23
- Suction filter – FVS-100 with shut off valve (M-30)
- Maximum row width – 25 feet
- Minimum row width – 6 feet
- Maximum crop height – 18 feet
- Minimum tractor engine HP – 55
- Fresh water tank
- Quick connects for spot spraying
- Chemical container rinse

## OPTIONS AVAILABLE

- Minitower
- Electric in-cab controls
- Deluxe spot spray gun

## A1000/850

Jacto's high performance Arbus 1000/850 airblast sprayer comes standard with a 33" fan, in-cab electric spray controls and a steering axle that allows for a very tight turning radius.



The larger 33-inch fan is perfect for mature orchards, vineyards, nurseries and high bush blueberries plus high density and taller crops like hops.

Features are the same as for the A1000/725 except for fan size and standard electric in-cab controls.

## SPECIFICATIONS

- Tank capacity – 265 Gallons fiberglass
- Fan diameter – 33 Inches
- Fan performance – 32,630 CFM @ 59 MPH
- Controls – VAR Electric in-cab controls standard
- Pump model - JP-75 piston pump 20 GPM
- Agitation – Mechanical & Bypass
- 18 Anti-drip flip-over nozzle holder - 36 total nozzles
- Nozzles installed - AD-4/AC-23 & AD-6/AC-23
- Suction filter – FVS-100 with shut off valve (M-30)
- Maximum row width – 25 feet
- Minimum row width – 6 feet
- Maximum crop height – 30 feet
- Minimum tractor engine HP – 60
- Fresh water tank
- Quick connects for spot spraying
- Chemical container rinse

## OPTIONS AVAILABLE

- Deluxe spot spray gun
- Will not fit "850" models with 33-inch fans

## A1500 DIAMOND/EL

Jacto's Arbus 1500 Diamond airblast sprayer provides exceptional coverage for fruit and nut growers and hops farms.



The 1500 has electric in-cab spray controls, 33" axial fan, two-speed gearbox with neutral. The gearbox lets you select the proper fan speed for sensitive crops.

The low mount fan design with debris shield and 24 nozzle holders insures excellent coverage for crops that have low growth, all the way up to canopies as high as 25 feet.

## SPECIFICATIONS

- Tank capacity – 400 Gallons high density poly
- Fan diameter – 33 Inches
- Fan performance Low - 32,630 CFM @ 75 MPH
- Fan performance High - 32,630 CFM @ 83 MPH
- Controls – VAR Electric in-cab controls standard
- Pump model - JP-150 piston pump 40 GPM
- Agitation – Mechanical & Bypass
- 24 Anti-drip flip-over nozzle holder - 48 total nozzles
- Nozzles installed - AD-4/AC-56 & AD-5/AC-25
- Suction filter – FVS-200 Double filter (M24/40)
- Maximum row width – 25 feet
- Minimum row width – 6 feet
- Maximum crop height – 25 feet
- Minimum tractor engine HP – 65
- Chemical Circuit & Fresh water tank
- Quick connects for spot spraying
- Chemical container rinse

## OPTIONS AVAILABLE

- Large Tire & Wheel Kit
- Deluxe spot spray gun
- 2" quick fill available

## A2000 SAPPHIRE/EL

Jacto's Arbus 2000 Sapphire/EL airblast sprayer offers incomparable performance in a wide variety of crops, such as highbush blueberries, apples, stone fruits, grapes, nuts, avocados, citrus and large nursery trees.



A 33" two port fan delivers 51,000 CFM of air at speeds up to 78 MPH, Jacto JP190 (50 GPM) ceramic cylinder high pressure piston pump, flip over and anti-drip nozzle holders with ceramic nozzles, CV PTO shaft and electric in-cab spray controls are standard.

## SPECIFICATIONS

- Tank capacity – 530 Gallons fiberglass
- Fan diameter – 33 Inches
- Fan performance Low - 50,853 CFM @ 78 MPH
- Controls – VAR Electric in-cab controls standard
- Pump model - JP-190 piston pump 50 GPM
- Agitation – Mechanical & Bypass
- 18 Anti-drip flip-over nozzle holder - 36 total nozzles
- Nozzles installed - AD-4/AC-56 & AD-6/AC-23
- Suction filter – FVS-200 Double filter (M24/40)
- Maximum row width – 25 feet
- Minimum row width – 6 feet
- Maximum crop height – 30 feet
- Minimum tractor engine HP – 80
- Chemical Circuit & Fresh water tank
- Quick connects for spot spraying
- Chemical container rinse

## OPTIONS AVAILABLE

- Large Tire & Wheel Kit
- Quick fill kit
- Deluxe spot spray gun

## A2000 SE/EL

Jacto's Arbus 2000 Super Export is equipped with our mid-mount 33" two-port fan. The center of the fan is approximately 66" from the ground, moving the air and nozzles closer to the crop canopy for increased spray deposition. Ideal when used in fruit and nut orchards, citrus groves and tall tree farms.



The SE features HD poly tank, stainless chemical circuit, flip over anti-drip nozzle holders with ceramic nozzles, high pressure piston pump, adjustable height axle, in-cab electric spray controls, chemical and circuit rinse tank, flotation tires and CV PTO.

## SPECIFICATIONS

- Tank capacity – 550 Gallons high density poly
- Fan diameter – 33 Inches
- Fan performance - 32,640 CFM @ 78 MPH
- Controls – VAR Electric in-cab controls standard
- Pump model - JP-190 piston pump 50 GPM
- Agitation – Mechanical & Bypass
- 36 Anti-drip flip-over nozzle holder - 72 total nozzles
- Nozzles installed - AD-4/AC-56 & AD-5/AC-45
- Suction filter – FVS-200 Double filter (M24/40)
- Maximum row width – 25 feet
- Minimum row width – 6 feet
- Maximum crop height – 30 feet
- Minimum tractor engine HP – 80
- Chemical Circuit & Fresh water tank
- Quick connects for spot spraying
- Chemical container rinse

## OPTIONS AVAILABLE

- Deluxe spot spray gun

## A2000 VA/EL

Jacto's Arbus 2000 Valencia 190EL airblast sprayer was specifically designed to meet the demands of large citrus groves, using our high-mount 33" two-port fan. The center of the fan is 81" from the ground, moves the air closer to the canopy and is excellent for nut groves and tall crops too.



The A2000 VA/EL has all the same features as the A2000 SE/EL including CV PTO and in cab electric spray controls.

## SPECIFICATIONS

- Tank capacity – 550 Gallons high density poly
- Fan diameter – 33 Inches
- Fan performance - 32,640 CFM @ 78 MPH
- Controls – VAR Electric in-cab controls standard
- Pump model - JP-190 piston pump 50 GPM
- Agitation – Mechanical & Bypass
- 36 Anti-drip flip-over nozzle holder - 72 total nozzles
- Nozzles installed - AD-4/AC-56 & AD-5/AC-45
- Suction filter – FVS-200 Double filter (M24/40)
- Maximum row width – 25 feet
- Minimum row width – 6 feet
- Maximum crop height – 30 feet
- Minimum tractor engine HP – 80
- Chemical Circuit & Fresh water tank
- Quick connects for spot spraying
- Chemical container rinse

## OPTIONS AVAILABLE

- Deluxe spot spray gun

# AIRBLAST



## A4000 SE/EL

Jacto's Arbus 4000 SE Airblast Sprayer is for the citrus, orchard, nut or tree grower with big acreage. The 1,050-gallon poly tank allows for fewer refills. The 33 inch two port mid-mount fan provides excellent air flow for optimum canopy penetration.



A chemical induction hopper on the side of the sprayer facilitates the mixing of chemicals without climbing on the sprayer. Plus a 100-gallon chemical circuit rinse and separate chemical container and fresh water rinse systems, poly tank and in cab electric spray controls for easier operation.

## SPECIFICATIONS

- Tank capacity – 1050 Gallons high density poly
- Fan diameter – 33 Inches
- Fan performance - 51,488 CFM @ 78 MPH
- Controls – VAR Electric in-cab controls standard
- Pump model - JP-190 piston pump 50 GPM
- Agitation – Mechanical & Bypass
- 36 Anti-drip flip-over nozzle holder - 72 total nozzles
- Nozzles installed - AD-4/AC-56 & AD-5/AC-25
- Suction filter – FVS-200 Double filter (M24/40)
- Maximum row width – 25 feet
- Minimum row width – 6 feet
- Maximum crop height – 30 feet
- Minimum tractor engine HP – 90
- Chemical induction hopper with Chemical Circuit & Fresh water tank
- Quick connects for spot spraying
- 2-inch quick fill
- Chemical container rinse

### OPTIONS AVAILABLE

- Deluxe spot spray gun

Optional: A4000 Valencia with High Fan available

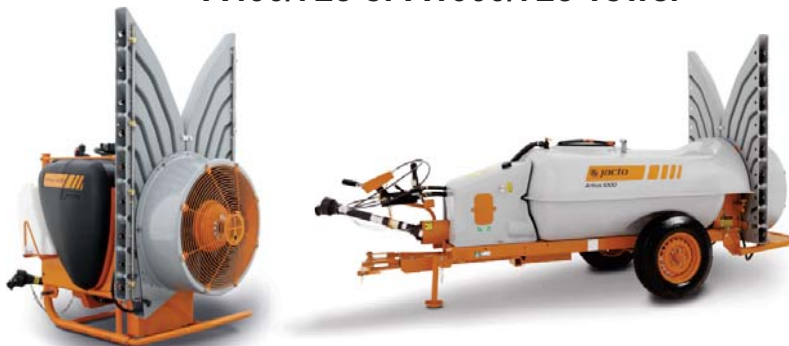
## A200 or A500 Tower



## TOWER ATTACHMENTS FOR A200 OR A500

- Excellent for blueberries, blackberries, raspberries, grapes and most fruit crops
- Quickly and easily mounts to any Jacto A200 or A500 sprayer
- The Minitower utilizes the existing 16 flip over nozzle holders and ceramic nozzles
- Engineered with precise air channels, the Minitower delivers uniform air flow from top to bottom
- Made of HDPE and color matched to the fan housing with UV protection for long life and durability
- Tower dimensions: 64 x 40 inches when installed on the A500T the overall height from the ground is 80 inches

## A400/725 or A1000/725 Tower



## TOWER ATTACHMENTS FOR A400 OR A1000/725

- Excellent for blueberries, blackberries, raspberries, grapes and most trellised fruit crops
- Quickly and easily mounts to any A400 or A1000 Sprayer with 28-inch fan
- The Minitower utilizes the existing 18 flip over nozzle holders and ceramic nozzles
- Engineered with precise air channels, the Minitower delivers uniform airflow from top to bottom
- Made of HDPE and color closely matched to the fan housing with UV protection for long life and durability
- When installed on the A1000 the overall height from the ground is 89 inches
- Will not fit "850" models with 33-inch fans





## AJ401

The AJ401 is one of Jacto's most versatile and economical cannon sprayers for a wide variety of spray applications, from sweet corn and pumpkins to fly control in dairies, as well as a cost effective application tool for Christmas tree farmers, nursery and greenhouse growers versus hand spraying.

The duct can be rotated horizontally 270 degrees and adjusted from horizontal to straight up. Great for a wide variety of crops and applying fly control sprays in dairies, over animal feedlots and can be used to disinfect poultry houses.

## SPECIFICATIONS

- Tank capacity – 105 Gallons high density poly
- Fan performance – 3,772 CFM @ 143 MPH
- Controls – Flow rate controller with manual levers
- Pump model – Single stage centrifugal (25 GPM)
- Agitation – Bypass
- Spray swath – 50 feet
- In-line filters – 80 mesh
- Duct rotation - Manual
- Duct elevation - Manual
- Minimum tractor engine HP - 30
- Clean water tank
- Chemical container rinse

### OPTIONS AVAILABLE

- Electric in-cab controls



## J400

The J400 cannon sprayer provides the speed and versatility you need to protect your crops with ease and accuracy, with spray swaths up to 80 feet.

The Cannon head is easy to manually operate and can be adjusted horizontally up to 290 degrees and vertically by 34 degrees. With simple calibration and manual on/off controls reachable from the tractor seat, the J400 is Jacto's best selling sprayer.

Popular applications are vegetables, especially pumpkins, melons and sweet corn, blueberries, Christmas trees, as well as container and tree nurseries.

## SPECIFICATIONS

- Tank capacity – 105 Gallons high density poly
- Fan performance – 4,237 CFM @ 180 MPH
- Controls – Flow rate controller with manual levers
- Pump model – Single stage centrifugal (25 GPM)
- Agitation – Mechanical & Bypass
- Spray swath – 80 feet
- Suction filter – FVS-102 with shut off valve (M-40)
- Duct rotation - Manual
- Duct elevation - Manual
- Minimum tractor engine HP - 40
- Clean water tank

- Chemical container rinse

### OPTIONS AVAILABLE

- Electric in-cab controls
- 24-inch duct extension
- Vertical hydraulic control kit
- Horizontal hydraulic control kit



## J400CHT/EL

The J400CHT/EL cannon sprayer provides all the same performance and benefits as our standard J400 only with hydraulic and electric controls... especially popular if you have a cab tractor.

The J400CHT/EL uses the tractor hydraulic remote ports to control vertical and horizontal movement of the duct and electric in-cab spray controls are standard. You must have two open sets of remotes on the tractor.

Popular applications are vegetables, especially pumpkins, melons and sweet corn, blueberries, Christmas trees, as well as container and tree

## SPECIFICATIONS

- Tank capacity – 105 Gallons high density poly
- Fan performance – 4,237 CFM @ 180 MPH
- Controls – Electric In-cab spray control
- Pump model – Single stage centrifugal (25 GPM)
- Agitation – Mechanical & Bypass
- Spray swath – 80 feet
- Suction filter – FVS-102 with shut off valve (M-40)
- Duct rotation – Hydraulic (Uses tractor remote ports)
- Duct elevation – Hydraulic (Uses tractor remote ports)

- Minimum tractor engine HP - 40
- Clean water tank
- Chemical container rinse

### OPTIONS AVAILABLE

- 24-inch duct extension

Optional Model: J400CHT without electric in-cab sprayer control available



## J600CHT

The J600CHT cannon sprayer is our largest and most powerful 3-point hitch cannon sprayer.

With 160-gallon capacity, high output fan with disconnect, Jacto 34 GPM dual stage centrifugal pump, a larger outlet duct and will achieve up to a 110-foot spray swath, depending on the crop and wind conditions.

The duct is adjusted hydraulically using the remote ports from the tractor. Popular for a variety of vegetables, especially pumpkins, melons and sweet corn, highbush and wild blueberries, Christmas trees as well as container and tree nurseries.

## SPECIFICATIONS

- Tank capacity – 160 Gallons high density poly
- Fan performance – 5,500 CFM @ 168 MPH
- Controls – Flow rate controller with manual levers
- Pump model – Dual stage centrifugal (34 GPM)
- Agitation – Mechanical & Bypass
- Spray swath – 110 feet
- Suction filter – FVS-102 with shut off valve (M-40)
- Duct rotation – Hydraulic (Uses tractor remote ports)
- Duct elevation – Hydraulic (Uses tractor remote ports)
- Minimum tractor engine HP - 55
- Clean water tank
- Chemical container rinse

### OPTIONS AVAILABLE

- Electric in-cab controls
- 39-inch duct extension
- 78-inch duct extension
- Vertical duct



## J600EL

The J600EL has the same great performance and specifications as the J600CHT but with self-contained hydraulics and in-cab electric controls standard.

With 160-gallon capacity, high output fan with disconnect, Jacto 34 GPM dual stage centrifugal pump, a larger outlet duct and will achieve up to a 110-foot spray swath, depending on crop and wind conditions.

The in-cab controller allows for on/off spray control and duct adjustment with the simple touch of the switches. Crop applications are the same as for the J600CHT.

## SPECIFICATIONS

- Tank capacity – 160 Gallons high density poly
- Fan performance – 5,500 CFM @ 168 MPH
- Controls – JEC 2500 Electronic Controls
- Pump model – Dual stage centrifugal (34 GPM)
- Agitation – Mechanical & Bypass
- Spray swath – 110 feet
- Suction filter – FVS-102 with shut off valve (M-40)
- Duct rotation – Self-contained hydraulic
- Duct elevation – Self-contained hydraulic
- Minimum tractor engine HP - 55
- Clean water tank
- Chemical container rinse

### OPTIONS AVAILABLE

- 39-inch duct extension
- 78-inch duct extension
- Vertical duct



## J1000CHT

The J1000CHT cannon sprayer is for wide swath spraying up to 80'. It uses the same fan and outlet application assembly as the proven 3-point J400CHT/EL, only with a 265-gallon tank, turns. low profile and tracking axle chassis for tighter

Standard are hydraulic controls of the outlet duct assembly for rotation and elevation and in-cab electric on/off spray controls.

Popular applications are vegetables, especially pumpkins, melons and sweet corn, blueberries, Christmas trees as well as container and tree nurseries.

## SPECIFICATIONS

- Tank capacity – 265 Gallons fiberglass
- Fan performance – 5,445 CFM @ 171 MPH
- Controls – Electronic in-cab spray control
- Pump model – JP-75 piston pump 20 GPM
- Agitation – Mechanical & Bypass
- Spray swath – 80 feet
- Suction filter – FVS-102 with shut off valve (M-30)
- Duct rotation – Hydraulic (Uses tractor remote ports)
- Duct elevation – Hydraulic (Uses tractor remote ports)
- Minimum tractor engine HP - 50
- Clean water tank
- Chemical container rinse

### OPTIONS AVAILABLE

- 24-inch duct extension



## J2000

The J2000 trailed cannon sprayer is designed for wide swath spraying applications up to a 110-feet depending on crop and wind conditions, and comes with a high output fan and outlet duct assembly for superior performance.

With 550 gallon poly tank, 26 GPM high pressure piston pump, wide angle CV PTO shaft for tighter turns, cable controls and handgun capable.

Ideal for container nurseries, shade houses, tree farms, highbush and low wild blueberries, pumpkins, sweet corn, vegetables and pasture management.

## SPECIFICATIONS

- Tank capacity – 550 Gallons high density poly
  - Fan performance – 5,445 CFM @ 171 MPH
  - Controls – Masterflow controls with cables
  - Pump model – JP-100 piston pump 26 GPM
  - Agitation – Mechanical & Bypass
  - Spray swath – 110 feet
  - Suction filter – FVS-200 Double filter (M24/40)
  - Duct rotation – Hydraulic  
(Uses tractor remote ports)
  - Duct elevation – Hydraulic  
(Uses tractor remote ports)
  - Minimum tractor engine HP - 75
  - Clean water tank
- Quick connect for spot spraying
  - Chemical container rinse

### OPTIONS AVAILABLE

- 39-Inch duct extension
- Vertical duct
- in-cab electric controls
- Deluxe spot spray gun



## J2000T Tandem

The J2000T tandem is the same great sprayer as the versatile J2000 cannon only with tandem axles for greater floatation, less compaction and increased stability.

The J2000T tandem has the same tank, fan, high pressure pump, outlet assembly, CV PTO and field performance as the standard J2000.

The tandem is ideal for vegetable growers with soft or sandy fields, wild blueberries, pumpkins and melons, container nurseries or where more stability is needed with the sprayer.

## SPECIFICATIONS

- Tank capacity – 550 Gallons high density poly
  - Fan performance – 5,445 CFM @ 171 MPH
  - Controls – Masterflow controls with cables
  - Pump model – JP-100 piston pump 26 GPM
  - Agitation – Mechanical & Bypass
  - Spray swath – 110 feet
  - Suction filter – FVS-200 Double filter (M24/40)
  - Duct rotation – Hydraulic  
(Uses tractor remote ports)
  - Duct elevation – Hydraulic  
(Uses tractor remote ports)
  - Minimum tractor engine HP - 75
  - Clean water tank
- Quick connect for spot spraying
  - Chemical container rinse

### OPTIONS AVAILABLE

- 39-Inch duct extension
- Vertical duct
- in-cab electric controls
- Deluxe spot spray gun

For complete  
product features,  
specifications, illustrated parts  
breakdown or owners manuals...

go to  
**[www.jacto.com](http://www.jacto.com)**  
and look under the  
Products tab.



XP312



XP416



## XP SERIES - BACKPACK

These ultra-comfortable, lightweight, robust and professional-grade Backpack sprayers require less pumping to achieve maximum operating pressure, only 8 pumps to 45psi reducing operator fatigue.

The XP series is available in 3 or 4 gallon capacity, blue/orange or white/orange color schemes with deluxe padded straps, in-line cylinder with Santoprene® piston cup, ergonomic tank design and hydraulic agitation for performance and comfort.

Popular with home, farm and ranch owners who need performance in a lightweight sprayer and tested to over 1000 hours of continuous operation.

XP12



XP16



## SPECIFICATIONS

- Tank capacity – 3 & 4 Gallon available
- Tank Material - Polyethylene UV resistant
- Fill opening – 3.9 inches
- Piston cup material – Santoprene®
- Piston cup – Single 35mm
- Chamber material – High density poly
- Chamber volume – 620 ml
- Pumps to 45 psi – 8
- Agitation – Hydraulic
- Max working pressure – 130+ psi
- Trigger valve – Ergonomic with filter
- Wand material – Stainless steel
- Shoulder straps – Padded with quick adjust
- Nozzles included – Blue adj. cone & EF80-02 Fan
- Right or left hand operation – No
- Weight dry – 7.7 lbs. (3 gal) & 7.9 lbs. (4 gal)

## OPTIONS AVAILABLE

- Herbicide hoods
- Extensions
- Booms
- Deluxe nozzle holders
- ECO Valve (Constant pressure valve)
- Nozzles

## HD SERIES - BACKPACK

Very popular with landscape professionals and organic farmers, the 4-gallon HD400 has an internal mechanical agitator that does an excellent job of keeping powdered chemicals, such as kaolin clay organic insecticides, in suspension.

We offer two color combinations for the HD400. The white/orange option with a Viton® piston cup, a choice for users who will spray caustic chemicals or our HD400 blue with a Santoprene® piston cup which offers a longer wear life than the Viton® option. Both models can be right or left hand operation. Tested for over 1500 hours of continuous operation.



HD400



HD400BL

## SPECIFICATIONS

- Tank capacity – 4 Gallon
- Tank Material - Polypropylene UV resistant
- Fill opening – 4.1 inches
- Chamber volume – 900 ml
- Pumps to 45 psi – 6
- Agitation – Mechanical
- Max working pressure – 65 psi
- Trigger valve – Heavy duty with lock
- Wand material – Stainless steel
- Shoulder straps – Padded with quick adjust
- Nozzles included – Blue adj. cone & EF80-02 Fan
- Right or left hand operation – Yes
- Weight dry – 8.16 lbs.

## OPTIONS AVAILABLE

- Herbicide hoods
- Extensions
- Booms
- Deluxe nozzle holders
- ECO Valve (Constant pressure valve)
- Nozzles

## CD & PJ16 Series – Backpack

Jacto's 4-gallon (16-liter) CD400 has long been a popular choice among farmers, landscapers, construction crews and others who need extreme toughness and maximum resistance to abusive chemicals.

Now you can choose both the CD400 (white/orange) and the PJ16 (blue/orange). In independent tests, the CD400 (PJ16) exceeded more than 2,500 hours of continuous operation without breaking down. Both models are fully convertible for either right- or left-hand operation and the piston cup is Viton® for CD400; Santoprene® for PJ16.



CD400



PJ16

## SPECIFICATIONS

- Tank capacity – 4 Gallon
- Tank Material - Polyethylene UV resistant
- Fill opening – 4.1 inches
- Piston cup material – Viton® (CD400) Santoprene® (PJ16)
- Piston cup – Dual 35mm
- Chamber material – Brass
- Chamber volume – 620 ml
- Pumps to 45 psi – 8
- Agitation – Mechanical
- Max working pressure – 85 psi
- Trigger valve – Heavy duty with lock
- Wand material – Stainless steel
- Metal tank base - powder coated
- Shoulder straps – Padded with quick adjust
- Nozzles included – Blue adj. cone & EF80-02 Fan
- Right or left hand operation – Yes
- Weight dry – 9.3 lbs.

## OPTIONS AVAILABLE

- Herbicide hoods
- Extensions
- Booms
- Deluxe nozzle holders
- ECO Valve (Constant pressure valve)
- Nozzles



## PJH Series – Backpack

The PJH is Jacto's leading seller globally, it is absolutely the world's top selling backpack sprayer – and the most imitated backpack sprayer ever.

The 5-gallon (20 liter) PJH will be highly recognized by commercial growers and landscapers who have emigrated from Latin America, where the PJH is an important and highly-popular tool for farm and crop care.

Fitted with a brass piston, Viton® piston cup, mechanical agitation and only 7 pumps to 45 psi, this is a workhorse sprayer... ideal for all crop care and herbicide applications

## SPECIFICATIONS

- Tank capacity – 5 Gallon
- Tank Material - Polyethylene UV resistant
- Fill opening – 5.5 inches
- Piston cup material – Viton®
- Piston cup – Dual 35mm
- Chamber material – Brass
- Chamber volume – 620 ml
- Pumps to 45 psi – 8
- Agitation – Mechanical
- Max working pressure – 85 psi
- Trigger valve – Heavy duty with lock
- Wand material – Stainless steel
- Shoulder straps – Padded with quick adjust
- Metal tank base - powder coated
- Nozzles included – Blue adj. cone & EF80-02 Fan
- Right or left hand operation – No
- Weight dry – 11.0 lbs.

## OPTIONS AVAILABLE

- Herbicide hoods
- Extensions
- Booms
- Deluxe nozzle holders
- ECO Valve (Constant pressure valve)
- Nozzles



## PJB Series – Battery-Powered Backpack

The 4-gallon PJB-16 – or the 5-gallon PJB-20 – is the right sprayer for accuracy and efficiency of on-target delivery of the spray solution. With such features as hydraulic agitation, multiple pressure settings, a walking pace (speed) indicator and built in self-diagnostics, the PJB16 is the right sprayer for everyone... from the market farmer, commercial greenhouse grower to busy landscape professional.

The PJB is equipped with an easy to change rechargeable lithium-ion battery. Depending on flow rates and pressures, typical battery run times per charge average 8 hours.

## SPECIFICATIONS

- Tank capacity – 4 & 5 Gallon available
- Tank Material - Polyethylene UV resistant
- Fill opening – 4.1 inches
- Pump type - Diaphragm
- Pump flow rate - 0.61 GPM
- Pump settings – 5 settings
- Agitation – Hydraulic with venturi
- Max working pressure – 80 psi
- Trigger valve – Heavy duty with lock
- Wand material – Stainless steel
- Shoulder straps – Padded with quick adjust
- Nozzles included – Blue adj. cone – SF110-02 Fan -DEF 06 - JD12P fixed cone
- Battery type – Removeable lithium-ion
- Battery capacity – 60 Wh (14.4V – 4.2 Ah)
- Time to charge – 4 hours
- Weight dry – 8.4 lbs.

## OPTIONS AVAILABLE

- Herbicide hoods
- Extensions
- Booms
- Deluxe nozzle holders
- ECO Valve (Constant pressure valve)
- Nozzles



## PJB16c – Battery-Powered Backpack

The PJB-16c combines technology with ease of use, in a comfortable lightweight 4-gallon design and will be the sprayer of choice for herbicide applications. Perfect for day-to-day use by everyone from the busy farmer or rancher to the landscaper and market gardener. Whether you walk, ride on an ATV or in a UTV, this sprayer will get the job done quickly and efficiently.

The PJB16c has an average 4 hour continuous spray time per charge cycle and a simple on/off control.

## SPECIFICATIONS

- Tank capacity – 4 Gallon
- Tank Material - Polyethylene UV resistant
- Fill opening – 4.1 inches
- Pump type - Diaphragm
- Pump flow rate - 0.61 GPM
- Pump settings – One
- Agitation – None
- Trigger valve – Ergonomic with filter
- Wand material – Stainless steel
- Shoulder straps – Padded with quick adjust
- Nozzle included – Blue adj. cone
- Battery type – Lithium-ion
- Battery capacity – 20 Wh (10.8V – 2.2 Ah)
- Time to charge – 6 hours
- Weight dry – 7.9 lbs.

## OPTIONS AVAILABLE

- Herbicide hoods
- Extensions
- Booms
- Deluxe nozzle holders
- ECO Valve (Constant pressure valve)
- Nozzles



## PJB8c

Like its bigger brothers the PJB-16 and 16c, the PJB-8c combines technology and ease of use in a very compact size. This 2 gallon shoulder mount sprayer is perfect for use in small plot growing, tight spaces such as greenhouses, border control in landscapes or plant-scape environments in office buildings. Whether you need to apply fungicides, pesticides or herbicides, this lightweight easy-to-use sprayer will do the job efficiently, with less effort as compared to pump-up compression sprayers. Continuous spray times up to 4 hours per charge cycle.

## SPECIFICATIONS

- Tank capacity – 2 Gallon
- Tank Material – Polyethylene UV resistant
- Fill opening – 3.9 inches
- Pump type - Diaphragm
- Pump flow rate - 0.61 GPM
- Pump settings – One
- Agitation – None
- Trigger valve – Ergonomic with filter
- Wand material – Stainless steel
- Shoulder straps – Padded with quick adjust
- Nozzle included – Blue adj. cone
- Battery type – Lithium-Ion
- Battery capacity – 20 Wh (10.8V – 2.2 Ah)
- Time to charge – 6 hours
- Weight dry – 5.9 lbs.

## OPTIONS AVAILABLE

- Herbicide hoods
- Extensions
- Booms
- Deluxe nozzle holders
- ECO Valve (Constant pressure valve)
- Nozzles



## HH5 - Compression

Rounding out the Jacto portable range is our new HH5 compression sprayer. This tough little 1.3-gallon (5 liter) capacity model features professional-grade trigger valve and lever – as well as a stainless steel spray lance. You won't find a better outfitted compression sprayer anywhere.

## SPECIFICATIONS

- Tank capacity – 1.3 Gallon
- Tank Material - Polyethylene UV resistant
- Fill opening – Funnel type
- Pump type - Piston with pressure relief
- Trigger valve – Ergonomic with filter
- Wand material – Stainless steel
- Shoulder straps – Adjustable
- Nozzle included – Blue adj. cone
- Weight dry – 3.5 lbs.

## OPTIONS AVAILABLE

- Herbicide hoods
- Extensions
- Booms
- Deluxe nozzle holders
- ECO Valve (Constant pressure valve)
- Nozzles

## PR-40 – Battery-Powered Pruner

Pruning is one of the most time-consuming and costly operations among vineyards, orchards, tree farmers and similar operations. Now Jacto has an answer with the new PR-40 pruning system. The labor-saving PR-40 operates 3 times faster than manual pruners. It's the only battery pruner on the market with 7 internal sensors that allow for powerful and extremely accurate progressive cuts. With a cut capacity up to 40 mm and a cut cycle time of less than one second, the PR40 reduces fatigue and labor.



## SPECIFICATIONS

- Maximum Cut diameter – 40 mm
- Blade material – Special titanium coated
- Cutting torque – 162 ft./lbs.
- Progressive cut – Yes for precision cuts
- Double cut – Two blade opening positions
- Motor – Two step gear reduction
- Battery voltage – 50.4 VDC
- Battery capacity – 5.8 Amp/hrs.
- Carry Harness – Deluxe with waist and chest strap
- Charge system – Active BMS to equalize cells
- Charge time – 6 hours
- Working time – 15+ hours depending on type of cut
- Pole extension length – Telescopic from 5.1 to 7.7 feet
- Pruner weight – 1.9 lbs.
- Battery weight – 5.7 lbs.
- Pole extension sold separately





### PJ401 – Condorito Configurable

Ideal for the grower that needs more than one style of sprayer. Start with the configurable Condorito base and add application kits as needed from the 4 assemblies shown... Making your configurable Condorito an efficient and versatile spraying system.



### SPECIFICATIONS

- Tank capacity – 105 Gallons high density poly
- Controls – CJ-42 control valve with manual lever
- Pump model – JP402 Piston pump 10 GPM
- Suction Filter – FVS-100 with shut off valve (M-60)
- Agitation – Bypass
- Conventional Boom – 33 feet with anti-drip nozzle holders
- Hooded herbicide sprayer – Adjustable from 5 to 10 feet
- Hose reels – Manual wind with 164 feet of 3/8 hose
- Minimum tractor engine HP - 30
- Clean water tank
- Chemical container rinse

### OPTIONS AVAILABLE

- Electric in-cab controls
- Deluxe spot spray gun



### Falcon Vortex – Air-Assist Boom

Jacto's Falcon Vortex air-assist boom sprayer is a 3-point hitch, 165-gallon capacity boom sprayer. It provides unsurpassed crop coverage and protection by utilizing Jacto's air-assist boom system that displaces the "dead" air around your crop with the spray solution suspended in high-speed "Vortex" air. Air-assist boom spraying can reduce drift up to 70%. It can also help reduce your operating cost by up to 60%.

Jacto's Falcon Vortex air-assist boom sprayer features a 46 foot hydraulically-controlled boom with electronic in-cab controls, hydraulically operated fan, ceramic cylinder high-pressure piston pump, and much more.

### SPECIFICATIONS

- Tank capacity – 165 Gallons high density poly
- Fan – Hydraulically controlled variable speed
- Fan performance - 18,822 CFM @ 62 MPH
- Controls – Masterflow with in-cab electric controls
- Pump model - JP-75 piston pump 26 GPM
- Agitation – Bypass with venture
- Boom – 46 foot with hydraulic fold
- Boom height – adjustable from 21 to 51 inches
- 29 Anti-drip flip-over nozzle holder - 58 total nozzles
- Nozzles installed – JA-2 & AXI 110-02
- Nozzle spacing – 20 inch
- Suction filter – FVS-100 with shut off valve (M-60)
- Chemical induction hopper with chemical container rinse
- Clean water tank
- Minimum tractor engine HP – 80

### Advance Vortex – Air-Assist Boom

Jacto's Advance Vortex air-assist boom sprayer is trailer-mounted and has an 800-gallon poly tank and a 60' hydraulically-controlled boom.

It provides unsurpassed crop coverage and protection by utilizing Jacto's air-assist boom system that displaces the "dead" air around your crop with the spray solution suspended in high-speed "Vortex" air. Air-assist boom spraying can reduce drift between 57 and 71%. It can also help reduce your operating cost by up to 60%.

Jacto's Advance Vortex air-assist boom come with electronic in-cab computerized controls.



### SPECIFICATIONS

- Tank capacity – 800 Gallons high density poly
- Chemical Circuit Rinse Tank – 53 Gallons
- Fan – Hydraulically controlled variable speed
- Fan performance - 23,555 CFM @ 61 MPH
- Controls – Masterflow with in-cab electric controls
- Rate controls – JSC5000 Automatic
- Pump model - JP-150 piston pump 40 GPM
- Agitation – Mechanical & bypass
- Boom – 60 foot with hydraulic fold and angle adjust
- Boom height – adjustable from 24 to 61 inches
- 37 Anti-drip flip-over nozzle holder - 74 total nozzles
- Nozzles installed – JA-2 & AXI 110-02
- Nozzle spacing – 20 inch
- Suction filter – FVS-200 Double filter (M24/40)
- Chemical induction hopper with chemical container rinse
- Clean water tank
- Minimum tractor engine HP – 90

### OPTIONS AVAILABLE

- Foam Marker Kit

## AERIAL JACTO



## RESEARCH CENTER JACTO



Throughout the evolution of agribusiness worldwide, concerns about productivity, quality and safety have gained prominence and have greatly influenced the outcome of each harvest.

There is no denying a good machine plays an important role in different crops and agricultural regions in the world.

Jacto, through its Research and Development Center, has devoted great effort to manufacture agricultural equipment with the highest technologies in the market and to ensure its development and manufacture processes meet customers' needs.

Throughout Jacto's history, its products have undergone changes due to specific needs of each region or farmer. Thus, Jacto is proud to offer the widest range of products intended for spraying, fertilizing and coffee harvesting to small and large farmers.

Jacto is committed to always be next to the farmer. Jacto's entire line of sprayers, from backpack to self-propelled sprayers, is equipped with precision agriculture.