



CUMMINGS & BRICKER

www.cummingsandbricker.com
support@cummingsandbricker.com

Effective: 06/01/2024

F.O.B. C&B



[Click here for ordering programs-Select Program #6 from Bookmarks](#)

WOODSPLITTERS

3PT HITCH WOODSPLITTERS

ITEMNUMBER	DESCRIPTION	WEIGHT	PRICE
WX320GRAY	Woodsplitter Horiz 3PH 36"	375	\$3,500.00
WX330GRAY	Woodsplitter Horiz 3PH 48"	425	\$3,910.00
WX350GRAY	Woodsplitter Vertical 3PH	220	\$2,180.00
WX360GRY	Woodsplitter Vertical 3PH 31T	320	\$2,770.00
WX370GRAY	Woodsplitter Horiz/Vert 3PH Pull Pin To Change	290	\$2,540.00

	WX310 Horizontal	WX320 Horizontal	WX330 Horizontal	WX350 Vertical	WX360 Vertical	WX370 Horiz. & Vert.
Split Opening	24"	36"	48"	24"	24"	24"
Rec. Hyd. Flow	10 GPM	13 GPM	13 GPM	10 GPM	16 GPM	10 GPM
Avg. Cycle Time <i>*depends on tractor flow</i>	6.62 sec.	11.43 sec.	15.24 sec.	6.62 sec	9.73 sec.	6.62 sec.
Full Cycle	13.24 sec.	22.86 sec.	30.48 sec.	13.24 sec.	19.47 sec.	13.24 sec.
Cylinder Diameter	4"	4.5"	4.5"	4"	5"	4"
Wedge Height	9"	10"	10"	9"	10"	10"
Dimensions	70" x 28" x 24"	96" x 30" x 24"	120" x 30" x 24"	70" x 28" x 18"	70" x 28" x 26"	86" x 30" x 30"
Mounting System	CAT I, iMatch & Quick Hitch Compatible	CAT I, iMatch & Quick Hitch Compatible	CAT I, iMatch & Quick Hitch Compatible	CAT I, iMatch & Quick Hitch Compatible	CAT I, iMatch & Quick Hitch Compatible	CAT I, iMatch & Quick Hitch Compatible

FEATURES

- Hands Free return – Auto Neutral
- Wide Wedge
- Choice of Color



WX310 - Horizontal



WX320 - Horizontal



WX330 - Horizontal



WX350 - Vertical



WX360 - Vertical



WX370 – Horizontal & Vertical

100-120 LEHIGH AVE.
P.O. BOX 928
BATAVIA, NY 14021
PHONE: 800-252-1552 FAX: 888-852-7406

100 STOVER DRIVE
CARLISLE, PA 17015
PHONE: 800-222-8969
FAX: 717-249-9384



CUMMINGS & BRICKER

www.cummingsandbricker.com
support@cummingsandbricker.com

Effective: 06/01/2024

F.O.B. C&B



WOODSPLITTERS

SKID LOADER WOODSPLITTERS

	WX410 Inverted Horizontal	WX430 Inverted Horizontal	WX470 Horizontal/Vertical
Split Opening	24"	36"	24"
Split Force	20 ton	25 Ton	20 Ton
Rec. Hydraulic Flow	10 GPM	13 GPM	10 GPM
Ave. Cycle Time* <i>*depends on skid steer flow</i>	6.62 sec.	11.43 sec.	6.62 sec.
Full Cycle* <i>*depends on skid steer flow</i>	13.24 sec.	22.86 sec.	13.24 sec.
Cylinder Diameter	4"	4.5"	4"
Wedge Height	9"	10"	9"
Dimensions	66" x 36" x 22"	96" x 36" x 22"	96" x 36" x 26"
Mounting System	Universal Quick Attach	Universal Quick Attach	Universal Quick Attach

FEATURES

- Wide Wedge
- Block Stripper Plates (410/430 models)
- Hands Free Return/Auto Neutral (470 models only)
- Choice of Color



WX410 – Inverted Horizontal



WX430 – Inverted Horizontal



WX470 – Horizontal/Vertical

ITEMNUMBER	DESCRIPTION	WEIGHT	PRICE
WX410YELLOW	Woodsplitter Skidsteer Inverted-No Valve	640	\$2,390.00
WX430YELLOW	Woodsplitter-Skidsteer 36" Inverted-No Valve	320	\$3,350.00
WX470YELLOW	Woodsplitter Horiz/Vert Skidsteer W/Valve	315	\$2,940.00

100-120 LEHIGH AVE.
P.O. BOX 928
BATAVIA, NY 14021
PHONE: 800-252-1552 FAX: 888-852-7406

100 STOVER DRIVE
CARLISLE, PA 17015
PHONE: 800-222-8969
FAX: 717-249-9384

**CUMMINGS & BRICKER**www.cummingsandbricker.com
support@cummingsandbricker.com

Effective: 06/01/2024

F.O.B. C&B



WOODSPLITTERS

ENGINE DRIVEN PULL TYPE WOODSPLITTERS

	WE225 / WX515T Horizontal	WE235 / WX530 Horizontal/Vertical	WX520^{1 2} Horizontal	WX540¹ Horizontal/Vertical
Split Opening	24"	24"	24"	24"
Split Force	20 Ton	20 Ton	20 Ton	20 Ton
Engine	160 CC Honda GCV160	160 CC Honda GCV160	196 CC Honda GX200	196 CC Honda GX200
Tires	4.80 x 8	4.80 x 8	4.80 x 8	4.80 x 8
Ave. Cycle Time	6.62 Sec.	6.62 Sec.	6.62 Sec.	6.62 Sec.
Full Cycle	13.24 Sec.	13.24 Sec.	13.24 Sec.	13.24 Sec.
Cylinder Diameter	4"	4"	4"	4"
Wedge Height	9"	9"	9"	9"
Bed Height	24" (WE225)/28" (WX515T)	31.5" (WE235)/24" (WX530)	24"	24"
Dimensions	81" x 40" x 38"	82" x 40" x 46"	72" x 42" x 36"	80" x 48" x 40"

	WX950 Horizontal	WX960 Horizontal	WX970 Horizontal	WX980¹ Horizontal/Vertical
Split Opening	24"	36"	48"	24"
Split Force	25 Ton	25 Ton	25 Ton	31 Ton
Engine	270 CC Honda GX270	270 CC Honda GX270	270 CC Honda GX270	270 CC Honda GX270
Tires	5.30 x 12	5.30 x 12	5.30 x 12	5.30 x 12
Ave. Cycle Time	5.24 Sec.	7.86 Sec.	10.48 Sec.	6.69 Sec.
Full Cycle	10.48 Sec.	15.72 Sec.	20.96 Sec.	13.38 Sec.
Cylinder Diameter	4.5"	4.5"	4.5"	5"
Wedge Height	10"	10"	10"	10"
Bed Height	25"	25"	25"	26"
Dimensions	81" x 63" x 38"	107" x 63" x 38"	130" x 63" x 38"	80" x 50" x 42"

¹ Factory Installed Lights Available On WX520/WX540/WX980 models² Raised bed option available on WX520 model**FEATURES**

- Hands Free Return – Auto Neutral
- Wide Wedge
- 2" Ball Hitch
- Two stage Hydraulic Pump – 11 GPM
- Choice of Color



ITEMNUMBER	DESCRIPTION	WEIGHT	PRICE
WX310GRAY	Woodsplitter Horiz 3PH 24"	215	\$2,270.00
WX515TBBLUE	Same As WX515 But With Bed Height Raised 6"	327	\$3,230.00
WX530BLUE	Woodsplitter 20T Horiz/Ver Trailer 5HP	470	\$3,400.00
WX520BLUE	Woodsplitter 20T Horizontal Trailer 5.5HP	470	\$3,710.00
WX520L	Woodsplitter 20T Horizontal Trailer 5.5HP With Lights Green	470	\$3,680.00
WX520TBBLUE	Same As WX520 But With Bed Height Raised 6"	470	\$3,980.00
WX540BLUE	Woodsplitter 20T Horiz/Vert Trailer 5.5HP	470	\$4,000.00
WX540LBLUE	Woodsplitter 20T Horiz/Vert Trailer 5.5HP With Lights	470	\$4,390.00
WX950BLACK	Woodsplitter 25T Horiz Trailer W/Lift Cradle 9HP	650	\$6,530.00
WX960BLUE	Woodsplitter 25T Horiz Trailer 36" W/Lift Cradle	725	\$7,540.00
WX970BLUE	Woodsplitter 25T Horiz Trailer 48" W/Lift Cradle	810	\$8,010.00
WX980BLUE	Woodsplitter 31T Horiz/Vert Trailer 9HP	550	\$5,340.00
WX980L	Woodsplitter 31T Horiz/Vert Trailer 9HP With Lights	550	\$4,740.00

100-120 LEHIGH AVE.
P.O. BOX 928
BATAVIA, NY 14021
PHONE: 800-252-1552 FAX: 888-852-7406

100 STOVER DRIVE
CARLISLE, PA 17015
PHONE: 800-222-8969
FAX: 717-249-9384



CUMMINGS & BRICKER

www.cummingsandbricker.com
support@cummingsandbricker.com

Effective: 06/01/2024

F.O.B. C&B



WOODSPLITTERS

ENGINE DRIVEN PULL TYPE WOODSPLITTERS

TWO-WAY HORIZONTAL WOOD SPLITTER **Wallenstein Net Price Items - REQUEST A QUOTE**

ITEMNUMBER	DESCRIPTION	WEIGHT
WXT15HBLUE	15 Ton Split Force - Vanguard 5.5HP Engine - 19" Split Opening - 3.6 Average Split Cycle Time - 7.2 Second Full Cycle Time	327
WXT20HBLUE	20 Ton Split Force - Vanguard 6.5HP Engine - 24" Split Opening - 6.6 Average Split Cycle Time - 13.2 Second Full Cycle Time	327

Bi-Directional Towable Horizontal Log Splitter

Double your firewood production with the WXT Bi-directional log splitter. After splitting a log, the WXT allows you to place your next log to be split as the wedge travels back to the home position.

- 2-Way Splitting Action
- Ergonomic – Operate the splitter comfortably from either side of the machine, bed height reduces body stress
- 27.5" Bed Height
- Grip-Strip Stop Block – supports enhanced split action
- Grit Finish- Minimizes scratches
- Two Stage Hydraulic Pump
- Wide Splitting Bed Shelves
- 2" Ball Hitch
- Highway towable (WXT20H Model)
- Light Kit (optional for WXT20H Model)



	WXT15H	WXT20H
Split Force	15 Ton	20 Ton
Engine	Vanguard 5.5HP	Vanguard 6.5HP
Split Opening	19"	24"
Average Splitter Cycle Time	3.6 Seconds	6.6 Seconds
Full cycle Time	7.2 Seconds	13.2 Seconds
Cylinder Diameter	3.5"	4"
Wedge Height	7.375"	9.375"
Tires	16.5"	18.2"
Dimensions	79.2" x 33.6" x 44.9	90.7" x 37.6" x 45.4"
Hydraulic Capacity	3.125 GPM	3.75 GPM

100-120 LEHIGH AVE.
P.O. BOX 928
BATAVIA, NY 14021
PHONE: 800-252-1552 FAX: 888-852-7406

100 STOVER DRIVE
CARLISLE, PA 17015
PHONE: 800-222-8969
FAX: 717-249-9384



CUMMINGS & BRICKER

www.cummingsandbricker.com
support@cummingsandbricker.com

Effective: 06/01/2024

F.O.B. C&B



WOODSPLITTERS

FIREBOLT 2x2 SPEED ENGINE DRIVEN PULL TYPE WOODSPLITTER

ITEMNUMBER	DESCRIPTION	WEIGHT	PRICE
WXR545PL	Firebolt Splitter - 22 Ton, Horizontal/Vertical/or 20 Degree Angel, Regenerative Valve, 6.5HP GX200 Honda Engine	625	\$4,870.00
WXR720	Firebolt Splitter - 27 Ton, Horizontal, Regenerative Valve, 6.5HP GX200 Honda Engine		\$4,270.00
WXR720L	Firebolt Splitter - 27 Ton, Horizontal, Regenerative Valve, 6.5HP GX200 Honda Engine, Light Kit		\$4,390.00
WXR740BLUE	Firebolt Splitter - 27 Ton, Horizontal/Vertical, Regenerative Valve, 6.5HP GX200 Honda Engine		\$4,990.00
WXR740LBLUE	Firebolt Splitter - 27 Ton, Horizontal/Vertical, Regenerative Valve, 6.5HP GX200 Honda Engine, Light Kit		\$5,240.00

FIREBOLT 2x2 SPEED



WXR720



WXR740

Featuring a 2-stage regenerative valve for blazing fast speed, coupled with a heavier 2-speed pump for extra power, the Firebolt offers the perfect combination of fast, efficient splitting with added strength when you need it.

30% FASTER VS PREVIOUS WX640

11 SECOND FULL CYCLE

OPTIONS:

Stroke Limiter (W4213) – Cylinder may be automatically stopped from fully returning to the home position cutting your time almost in half.



Folding Shelf (W4212)



Clamp On Shelf (W4211)



SPECIFICATIONS

	WXR545	WXR720	WXR740
Splitter Orientation	Horiz/Vert/20°	Horizontal	Horizontal/Vertical
Dimensions (L x W x H) inches	108" x 49" x 45"	76 x 40 x 44	83 x 48 x 44
Wedge Height	9"	10"	9"
Mounting	Trailer Mounted		
Engine	Honda GX200 0 196 CC		
Cylinder Diameter	4"	4.5"	
Cylinder Stroke	24"		
Splitting Force	22 Ton	27 Ton	
Valve Type	4 – Pos. Spring Loaded To Neutral		
Hydraulic Pump Type & Flow	2 Stage – 13 GPM / 49 IPM		
Bed Height	24"	27"	
Tire Size & Type	4.8 – 8 LRB Sport Trail 4 on 4" – Highway		
Safety Chains	Standard		
Ball Hitch Size	2" Ladder Style Ball Coupler	2" standard	
Auto Return to Neutral	Yes		
Average Cycle Time/ Full Cycle Time	5 sec / 10.3 sec	5.35 secs / 11 secs	
Options	W4120 – 4 Way Wedge	W4140 – 4 Way Wedge	W4130 – 4 Way Wedge
Weight	625 lbs.	460 lbs.	570 lbs.

100-120 LEHIGH AVE.
P.O. BOX 928
BATAVIA, NY 14021
PHONE: 800-252-1552 FAX: 888-852-7406

100 STOVER DRIVE
CARLISLE, PA 17015
PHONE: 800-222-8969
FAX: 717-249-9384



CUMMINGS & BRICKER

www.cummingsandbricker.com
support@cummingsandbricker.com

Effective: 06/01/2024

F.O.B. C&B



WOODSPLITTERS

WOODSPLITTER OPTIONS

ITEMNUMBER	DESCRIPTION	WEIGHT	PRICE
W4110	4 Way Wedge WE220/WX310/WX515/WX520/WX520T	26	\$410.00
W4120	4 Way Wedge - WE230/WX350/370/410/440/470/530/540,WXR545PL	26	\$410.00
W4130	4 Way Wedge WX320/330/360/370/430/450/460/630/640/920/930/950/960/970/980/WXR740	26	\$410.00
W4140	4 Way Wedge WX615/620/620T/910/910T/WXR720	26	\$410.00
W4213	Stroke Limiter - Firebolt Splitters WXR720/WXR720L/WXR740/WXR740L		\$330.00
W4214	Stroke Limiter WX360/450/460/980		\$330.00
W4202	12" Hitch Extension For 2" Ball Hitch-*Required For ATV Use.		\$80.00
W4211	Clamp On Shelf Extension - WX310/370/440/460/470/515/520/520T/530/540/615/620/620T/630/640/910/910T/980WXR7 20/WXR740		\$200.00
W4212	Folding Shelf - Firebolt Splitters WXR720/WXR720L		\$715.00
W4204	Log Splitter Cover All Weather / High Speed Travel		\$185.00

100-120 LEHIGH AVE.
P.O. BOX 928
BATAVIA, NY 14021
PHONE: 800-252-1552 FAX: 888-852-7406

100 STOVER DRIVE
CARLISLE, PA 17015
PHONE: 800-222-8969
FAX: 717-249-9384



CUMMINGS & BRICKER

www.cummingsandbricker.com
support@cummingsandbricker.com

Effective: 06/01/2024

F.O.B. C&B



WOOD PROCESSOR

ITEMNUMBER	DESCRIPTION	WEIGHT	PRICE
WP245	Wood Processor 24" Stroke - 3PH Tractor Hydraulics, Auto Cycle, CAT I & II	1614	\$12,950.00
WP275	Wood Processor 36" Stroke - 3PH Tractor Hydraulics, Auto Cycle, CAT I & II	1785	\$13,850.00
WP525	Wood Processor 23" - 20 Ton, Vanguard 6.5HP Engine, 13.2 Second Cycle, Electric Start	1525	\$13,680.00
WP845	Wood Processor 24" - 25 Ton, Vanguard 14 HP Engine, 8.3 Second Cycle, Electric Start	2035	\$18,160.00
WP875	Wood Processor 36" - 25 Ton, Vanguard 14 HP Engine, 12.1 Second Cycle, Electric Start	2273	\$18,940.00

	WP245	WP275	WP525	WP845	WP875
Split Opening	24"	36"	23"	24"	36"
Split Force	25 Ton	25 Ton	20 Ton	25 Ton	25 Ton
Engine	N/A	N/A	Vanguard 6.5 HP	Vanguard 14HP	Vanguard 14HP
Min. Tractor HP	45	45	N/A	N/A	N/A
Req. Hydraulic Flow	12-24 GPM	12-24 GPM	N/A	N/A	N/A
Discharge Chute Height	54"	54"	76"	54"	54"
Full Cycle Time	Varies W/Tractor Hydraulics	Varies W/Tractor Hydraulics	13.2 Sec.	8.3 Sec.	12.1 Sec.
Cylinder Diameter	4.5"	4.5"	4"	4.5"	4.5"
Max. Log Diameter	22"	22"	16"	22"	22"
Cords Per Hour	1-2	1-2	1	1-2	1-2
Winch Pulling Capacity	1550 lbs.	1550 lbs.	1200 lbs.	1550 lbs.	1550 lbs.
Winch Rope Length/Diameter	50' /1/4" Diameter	50' /1/4" Diameter	50' /1/4" Diameter	50' /1/4" Diameter	50' /1/4" Diameter
Dimensions Open	220" x 69" x 66"	246" x 69" x 66"	175" x 54" x 85"	220" x 69" x 66"	246" x 69" x 66"
Dimensions Folded	98" x 69" x 79"	125" x 69" x 79"	122" x 54" x 83"	98" x 73" x 79"	125" x 73" x 79"
Mounting System	CAT I & CAT II	CAT I & CAT II	N/A	N/A	N/A

FEATURES

- Adjustable 4-way Wedge
- 5.30 x 12 tires with 2" ball hitch & Torflex Suspension Axle
- Length Indicator
- Adjustable Offload Chute
- Floating Stabilizer
- Auto Cycle – Hands Free



WP275 – CATII iMatch Quick Hitch Compatible

WP275 – CATII iMatch Quick Hitch Compatible

WP525 – Highway Towable

WP845 – Highway Towable

WP875 – Highway Towable

100-120 LEHIGH AVE.
P.O. BOX 928
BATAVIA, NY 14021
PHONE: 800-252-1552 FAX: 888-852-7406

100 STOVER DRIVE
CARLISLE, PA 17015
PHONE: 800-222-8969
FAX: 717-249-9384



CUMMINGS & BRICKER

www.cummingsandbricker.com
support@cummingsandbricker.com

Effective: 06/01/2024

F.O.B. C&B



WOOD PROCESSOR

WOOD PROCESSOR OPTIONS

ITEMNUMBER	DESCRIPTION	WEIGHT	PRICE
Z99001	48" Log Peavey		\$200.00
Z92405	60" Winching Strap		\$44.00
P100	Chainsaw Holder For WP Wood Processors - Sleeve To Slide Saw Bar Into		\$155.00
P210	Spare Pivoting Chainsaw Adapter Kit P201 - Clasp Style Only		\$210.00
P211	Spare Chainsaw Adapter Kit Knob Style Pivot Only		\$141.63
P400	Closed Center Valve For WP235/635/835/865 5 Series Models	8	\$325.00
P500	Frame For Mesh Firewood Bags	180	\$935.00
P600	6 Way Wedge-WP230/630/830/860 Wood Processors Models		\$985.00
P601	6 Way Wedge - WP235/240/635/835/840/865/870 Models	68	\$1,116.50
Z99007	Mesh Firewood Bag		\$18.00

100-120 LEHIGH AVE.
P.O. BOX 928
BATAVIA, NY 14021
PHONE: 800-252-1552 FAX: 888-852-7406

100 STOVER DRIVE
CARLISLE, PA 17015
PHONE: 800-222-8969
FAX: 717-249-9384



CUMMINGS & BRICKER

www.cummingsandbricker.com
support@cummingsandbricker.com

Effective: 06/01/2024

F.O.B. C&B



WOOD PROCESSOR

WP 1600 SERIES WOOD PROCESSOR

****Wallenstein Net Price Items - REQUEST A QUOTE****

ITEMNUMBER	DESCRIPTION	WEIGHT
WP162412	Wood Processor W/ Saw - 26" Split Opening, 20 Ton Splitting Force, Briggs & Stratton Vanguard 29HP (896CC), 12' Conveyor, Top Roller, Seat	3700
WP162424	Wood Processor W/ Saw - 26" Split Opening, 20 Ton Splitting Force, Briggs & Stratton Vanguard 29HP(896CC), 24' Conveyor, Top Roller, Seat	3700

1600 SERIES OPTIONS

ITEMNUMBER	DESCRIPTION	PRICE
Z99010	Harvester Chainsaw Bar	\$242.49
2250A058	Saw Chain / 18HX X 78 Links	\$91.25
P906	Chain Package Of 6 WP1624	\$385.00

WP1600 Series



SPLIT FORCE:	20 Ton	CYLINDER DIAMETER:	4"
SPLIT OPENING:	26"	RECOMMENDED LOG DIAMETER:	16"
MAXIMUM LOG DIAMETER:	18"	MAXIMUM LOG LENGTH:	192"
LOG TROUGH LENGTH:	150"	ENGINE:	Vanguard 29HP
LOG DECK TYPE:	Folding Two-Stage Live Deck	LOG DECK HEIGHT:	53"
LOG DECK LENGTH:	70"	LOG DECK WIDTH:	72"
BAR OILER:	Automatic	HYDRAULIC PUMP - STAGE 1:	14 gpm
HYDRAULIC PUMP - STAGE 2:	7.75 gpm	HYDRAULIC PUMP - STAGE 3:	4.15 gpm
DIMENSIONS OPEN (LXWXH):	232" x 114" x 76"	DIMENSIONS FOLDED (LXWXH):	232" x 66" x 105"
TOTAL WEIGHT:	3700 lbs.	SPLITTER CHUTE CLEARANCE:	20"
SAW BAR:	Oregon® 25" Harvester Bar	SAW DRIVE:	Hydraulic Gear Motor
SAW CHAIN:	18HX 0.404	FULL STROKE SPLITTING CYCLE TIME:	6.5 Seconds
AVERAGE CUT TO CUT CYCLE TIME:	12 Seconds	THROUGHPUT:	1.5 - 2.75 Cord Per Hour
TIRES:	ST205/75R15	HITCH:	2" Ladder Style Ball Coupler
TONGUE WEIGHT:	480 lbs.	HYDRAULIC TANK CAPACITY:	26 US gal
FUEL TANK CAPACITY:	10 US gal	SAW BAR OIL RESERVOIR CAPACITY:	1.5 US gal

100-120 LEHIGH AVE.
P.O. BOX 928
BATAVIA, NY 14021
PHONE: 800-252-1552 FAX: 888-852-7406

100 STOVER DRIVE
CARLISLE, PA 17015
PHONE: 800-222-8969
FAX: 717-249-9384



CUMMINGS & BRICKER

www.cummingsandbricker.com
support@cummingsandbricker.com

Effective: 06/01/2024

F.O.B. C&B



FIREWOOD CONVEYORS

ITEMNUMBER	DESCRIPTION	WEIGHT	PRICE
CT16BBLUE	16' Firewood Conveyor - Vanguard 160 Engine (Assembly Required)	880	\$8,690.00
CT24BBLUE	24' Firewood Conveyor - Vanguard 160 Engine (Assembly Required)	1040	\$9,620.00

Firewood Conveyors

- Heavy-Duty Steel Frame
- Heavy-Duty Conveyor Chain
- 90° Tire Rotation



	CT16B	CT24B
Maximum Pile Height	8.5'	13.5'
Trough Length	16'	24'
Trough Width	8" wide-flared out to 20" at top	
Trough Depth	7"	
Power Source	Vanguard 5 HP Engine	Vanguard 5HP Engine
Hydraulic Pressure	3000 psi	-
Recommended Hydraulic Flow	3 gpm	-
Chain Type	662 Pintle Heavy Conveyor Chain	
Chain Drive	Engine Direct-Drive, Bottom Sprocket	Engine Direct-Drive, Bottom Sprocket
Flight	2" High Serrated	
Dimensions Raised (LxWxH)	212" x 70" x 63"	307" x 74" x 83"
Hitch	Clevis Hitch	
Tire Size	5.30-12	
Total Weight	880 lbs.	1040 lbs.

100-120 LEHIGH AVE.
P.O. BOX 928
BATAVIA, NY 14021
PHONE: 800-252-1552 FAX: 888-852-7406

100 STOVER DRIVE
CARLISLE, PA 17015
PHONE: 800-222-8969
FAX: 717-249-9384



WOODCHIPPERS

3PT HITCH - PTO MODELS

GRAVITY FEED

FEATURES

- Gravity Feed System
- Disc Type Chipper
- 4 Chipper Knives
- 360 Degree Chute Rotation
- PTO Direct Drive



	BX36S	BX52S	BX72S	BX102S
Chipper capacity	3.5"	5"	7"	10"
Engine HP Range	12-30 HP	40-55 HP	50-85 HP	80-120
Chipper Hopper Opening	13" x 20"	20" x 20"	22" x 25"	25"-26"
Chipper Rotor Opening	3.5" x 9"	5" x 10"	7" x 12"	10" x 15"
Rotor Diameter	25"	25"	28"	36"
Rotor Weight	96 lbs.	125 lbs.	175 lbs.	400 lbs.
Discharge Chute Height	60"	66"	82"	89"
PTO Height	13" – 19"	13" – 19"	19"	23"
Dimensions – Open	55" x 45" x 60"	61" x 64" x 66"	64" x 70" x 82"	71" x 71" x 89"
Dimensions - Folded	n/a	43" x 42" x 66"	48" x 42" x 82"	61" x 58" x 89"
Mount System	CAT I, iMatch & Quick Hitch Compatible	CAT I, iMatch & Quick Hitch Compatible	CAT I & II	CAT II, iMatch & Quick Hitch Compatible

HYDRAULIC FEED

FEATURES

- Dual Hydraulic Roller Feed
- Disc Type Chipper
- 4 Chipper Knives
- 360 Degree Chute Rotation
- PTO Direct Drive



	BX52R/RI*	BX72R/RI*	BX102R/RI*	BX102RPI*
Chipper capacity	5"	7"	10"	10"
Engine HP Range	40-55 / 30-55 HP	50-85 / 45-85 HP	80-120 / 75-120	75-120
Chipper Hopper Opening	35" x 30"	26" x 35"	30" x 42"	30" x 42"
Chipper Rotor Opening	5" x 10"	7" x 12"	10" x 17"	10" x 17"
Rotor Diameter	25"	28"	36"	36"
Rotor Weight	125 lbs.	185 lbs.	425 lbs.	425 lbs.
Discharge Chute Height	74"	90"	100"	100"
PTO Height	22" x 27"	26"	34"	34"
Dimensions – Open	80" x 67" x 74"	108" x 64" x 90"	108" x 85" x 100"	108" x 85" x 100"
Dimensions - Folded	62" x 61" x 74"	83" x 56" 90"	85" x 71" x 100"	85" x 71" x 100"
Mount System	CAT I, iMatch & Quick Hitch Compatible	CAT I & II	CAT II, iMatch & Quick Hitch Compatible	CAT II, iMatch & Quick Hitch Compatible

**RI & RPI models have P3 Technology.*



CUMMINGS & BRICKER

www.cummingsandbricker.com
support@cummingsandbricker.com

Effective: 06/01/2024

F.O.B. C&B



WOODCHIPPERS

3PT HITCH - PTO MODELS

ITEMNUMBER	DESCRIPTION	WEIGHT	PRICE
BX36S	Chipper 3.5" - 3 Point Hitch Manual Feed	395	\$3,940.00
BX52S	Chipper 5" - 3 Point Hitch with Manual Feed	505	\$4,930.00
BX52R	Chipper 5" - 3 Point Hitch, Hydraulic Feed	845	\$8,950.00
BX52RIRED	Chipper 5" - 3 Point Hitch with Hydraulic Feed, P3 Pulse Control	860	\$11,510.00
BX72S	Chipper 7" - 3 Point Hitch with Manual Feed	728	\$6,390.00
BX72R	Chipper 7" - 3 Point with Hydraulic Feed	1025	\$11,490.00
BX72RIRED	Chipper 7" - 3 Point Hitch with Hydraulic Feed, P3 Pulse Control	1030	\$14,250.00
BX102S	Chipper 10" - 3 Point Hitch with Manual Feed	1143	\$8,770.00
BX102RRED	Chipper 10" - with Hydraulic Feed	2265	\$15,100.00
BX102RIRED	Chipper 10" - 3 Point Hitch with Hydraulic Feed, P3 Pulse Control	1945	\$17,750.00
BX102RPI	Same As BX102RI But With Hydraulic Winch & Top Roller Lift, P3 Pulse Control	2150	\$22,290.00
C4550	Self Contained PTO Power Pack For BX102R Chippers		\$3,035.00
C3540	PTO Pump Kit For BX42R/BX52R/BX62R/BX72R Units-For Use On Tractors With No Remote Hydraulics		\$1,160.00
CBM100	Biomass Kit For BX72R		\$510.00
CBM200	Biomass Kit BX102 Series		\$550.00
CHE100	Discharge Chute Extension BX72/102		\$695.00

BX Woodchippers



Hydraulic feed hoppers with a wrap-around lever that starts and stops the dual spring loaded rollers, maximizes chipping.



Self-feed intake hoppers are designed to angle the brush against the rotor and blades, pulling the branches into the chipper.



Both hydraulic and self-feed intake hoppers easily fold up for safe travel on narrow trails and storage.



100-120 LEHIGH AVE.
P.O. BOX 928
BATAVIA, NY 14021
PHONE: 800-252-1552 FAX: 888-852-7406

100 STOVER DRIVE
CARLISLE, PA 17015
PHONE: 800-222-8969
FAX: 717-249-9384



CUMMINGS & BRICKER

www.cummingsandbricker.com
support@cummingsandbricker.com

Effective: 06/01/2024

F.O.B. C&B



WOODCHIPPERS

3PT HITCH - PTO MODELS



Features of BXR Models with hydraulic roller feed



Hydraulic Feeding Hopper with infinitely variable speed adjustment.



Spring loaded Auto Adjusting Feed rollers.



Safety Start/Stop Wrap Around Roller Control Lever. (Forward, Neutral, Reverse)



Optional Hydraulic power pack for tractors without hydraulics.

BX102R



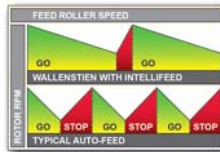
INTELLIFEED

ELECTRONIC CONTROL SYSTEM

BX72R/BX102R

The optional fully programmable Intellifeed monitors the rotor's RPM, slowing the roller speed as needed.

Intellifeed continues the chipping at a volume that best matches its RPM.



10" x 17" slab style opening.



Easy start tension relief.



Dual active rollers.



Safety control bar. Shuts off feed rolls.



Top Roller Hydraulic lift on RP and RPI models.



Hydraulic winch on RP and RPI models.

Note: winch capacity = 1200 lbs. Speed = 13" per second Synthetic winch rope =50' long 1/4" diameter "R" model chippers require a minimum of 3 GPM from tractor remotes.

100-120 LEHIGH AVE.
P.O. BOX 928
BATAVIA, NY 14021
PHONE: 800-252-1552 FAX: 888-852-7406

100 STOVER DRIVE
CARLISLE, PA 17015
PHONE: 800-222-8969
FAX: 717-249-9384



CUMMINGS & BRICKER

www.cummingsandbricker.com
support@cummingsandbricker.com

Effective: 06/01/2024

F.O.B. C&B



WOODCHIPPERS

TRAILER TYPE - ENGINE DRIVEN MODELS

ITEMNUMBER	DESCRIPTION	WEIGHT	PRICE
BXC34RED	3" Capacity Chipper w/ 200CC Honda GX200 - Push Type	213	\$3,110.00
BXT36SRED	3.5" Trailed Chipper - Gravity Feed, 14HP Vanguard Engine	773	\$5,990.00
BXT52SRED	5" Trailed Chipper - Gravity Feed, 23HP, Vanguard Engine	1035	\$9,380.00
BXT72SRED	7" Trailed Chipper - Gravity Feed, 40HP, Vanguard Engine	1464	\$13,630.00
BXH42	4" Capacity-Skidsteer Mount	740	\$6,200.00

FEATURES

- Disc Type Chipper with Gravity Feed System
- Reversible Chipping Blades
- Positional Discharge Deflector
- Angled Rotor
- Twig Breaker
- Highway Towable w/Torflex Suspension (*BXT models only*)
- Self-Feeding Hopper (*BXT models*)



	BXC34	BXT36S	BXT52S	BXT72S
Chipper capacity	3"	3.5"	5"	7"
Engine	Vanguard 6.5 HP (203cc)	Vanguard 14 HP (408cc)	Vanguard 23 HP (627cc) EFI	Vanguard 40 HP (990cc) EFI
Chipper Hopper Opening	18" x 18"	19" x 19"	24.5" x 20"	26.7" x 24"
Chipper Rotor Opening	4" x 4"	3.6" x 10"	5" x 10"	7.3" x 11"
# of Knives	2	2	2	4
Rotor Diameter	17"	25"	25"	28"
Rotor Weight	28 lbs.	145 lbs.	170 lbs.	247 lbs.
Discharge Type	Blower w/Positional Deflector	Adjustable Discharge Chute	Adjustable Discharge Chute	Adjustable Discharge Chute
Discharge Chute Height	N/A	62"	69"	89"
Discharge Chute Rotation	N/A	284°	295°	295°
Drive System	Brake Clutch, Belt Drive	Centrifugal Clutch, Belt Drive	Centrifugal Clutch, Belt Drive	Centrifugal Clutch, Belt Drive
Engine RPM	3600	3600	3600	3600
Rotor RPM	2480	1620	2000	2070
Tires	4.10 x 3.5	4.80 x 8	5.30 x 12	5.30 x 12
Dimensions	49" x 35" x 44"	111" x 43" x 62"	134" x 47 3/4" x 70"	150" x 54" x 90"



	BXH42
Chipping Capacity	4"
Recommended Hydraulic Flow	25 GPM
Chipper Hopper Opening	20" x 20"
Chipper Rotor Opening	4" x 10"
# of Chipper Knives	2
Rotor Diameter	25"
Rotor Weight	74 lbs.
Discharge Chute Height	72"
Discharge Chute Rotation	360 Degrees
Drive System	Hydraulic
Dimensions (L x W x H)	80" x 57" x 72"

100-120 LEHIGH AVE.
P.O. BOX 928
BATAVIA, NY 14021
PHONE: 800-252-1552 FAX: 888-852-7406

100 STOVER DRIVE
CARLISLE, PA 17015
PHONE: 800-222-8969
FAX: 717-249-9384



CUMMINGS & BRICKER

www.cummingsandbricker.com
support@cummingsandbricker.com

Effective: 06/01/2024

F.O.B. C&B



WOODCHIPPERS

TRAILER TYPE - HYDRAULIC SELF FEEDING

****Wallenstein Net Price Items - REQUEST A QUOTE****

ITEMNUMBER	DESCRIPTION	WEIGHT
BXTR5224	Trailer Chipper 5" Honda GX690 Cent Clutch, P3 Pulse Control	
BXTR6438GREEN	Commercial Trailer Chipper 7" Diameter Capacity, 999CC Kohler CH980 Engine, W/ P3 Pulse Control.	
BXTR6438B	Same As BXTR6438 But With Electric Brakes	
C400	Ladder Hitch For BXTR5224	
C450	Clean Out Tray For BXTR5224	

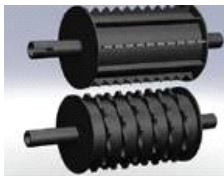


PRODUCT FEATURES:

- IntelliFeed Technology For Maximized Productivity
- Disc Chipper
- Honda or Kohler Powered Engines
- Dual-Active Feed Rollers
- Oversized Angled-Rotor Improves Efficiency
- Hardened Reversible Knives
- Wide Feed-Hopper Opening
- Twig Breaker

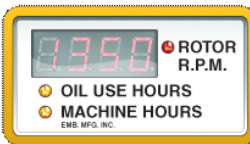
BXTR CHIPPERS - Commercial Grade For Contractors, Municipal, Landscape, & Rental

	BXTR5224	BXTR6438F	BXTR6438P
Chipping Capacity	5"	7"	7"
Engine	688 CC Honda GX690	999 CC Kohler CH980	999 CC Kohler CH980
Chipper Hopper Opening	24" x 35"	25" x 34"	25" x 34"
Chipper Housing Opening	5.25" x 9"	7" x 11"	7" x 11"
Rotor Diameter/Weight	25" / 117 lbs.	30" / 197 lbs.	30" x 197 lbs.
Number of Knives	2	4	4
Dimensions Open	126" x 80" x 54"	149" x 64" x 100"	149" x 64" x 100"
Dimensions Folded	107" x 80" x 54"	128" x 64" x 100"	128" x 64" x 100"
Discharge Hood Rotation	270°	360°	360°
Discharge Hood Height	80"	100"	100"
Total Weight	1425 lbs.	2225 lbs.	2225 lbs.
Drive System	Centrifugal Clutch, Belt Drive	Fluid Coupler, Belt Drive	Fluid Coupler, Belt Drive
Tires	5.30-12	ST205/75R14	ST205/75R14
Hitch	2" Ball	2" Ladder Style Ball Coupler	2" Ladder Style Ball Coupler
Electric Brakes	No	No	Yes
Max Feed Rate	85	129	129



Dual Active Rollers

For better feeding performance, top and bottom rollers are hydraulically driven and speed is controlled by IntelliFeed



IntelliFeed Electronic Control

Fully programmable, IntelliFeed monitors rotor RPM, slowing the rollers' speed as needed. Chipping continues at a volume best matched to rotor RPM.

Rapid Recovery Auto Reverse

When rotor RPM slows, rolls are automatically reversed, moving the log away from the rotor allowing it to increase RPM's faster.



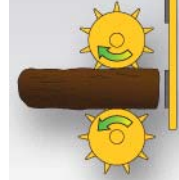
Auto engage centrifugal clutch eliminates lever-activated belt tightener, improving belt life



Torflex Suspension Axle, highway tires



Brake and L/R Turn Signal lights



Rapid Recovery Auto Reverse



Lift assist: Top roller easily lifts for servicing using gas shocks

Additional details and PDF brochure at www.wallensteinequipment.com

100-120 LEHIGH AVE.
P.O. BOX 928
BATAVIA, NY 14021
PHONE: 800-252-1552 FAX: 888-852-7406

100 STOVER DRIVE
CARLISLE, PA 17015
PHONE: 800-222-8969
FAX: 717-249-9384



CUMMINGS & BRICKER

www.cummingsandbricker.com
support@cummingsandbricker.com

Effective: 06/01/2024

F.O.B. C&B



CHIPPER SHREDDERS

3 POINT HITCH CHIPPER SHREDDERS

ITEMNUMBER	DESCRIPTION	WEIGHT	PRICE
BXM32YELLOW	Chipper Shredder-3 Point Hitch-3" Chipping, 1" Shredding Capacity	445	\$5,180.00
BXM42	Chipper Shredder-3 Point Hitch-4" Chipping, 2" Shredding Capacity	800	\$6,620.00



FEATURES

- Disc Type Chipper W/Gravity Feed System and Hammer Mill Shredder
- 540 RPM PTO Belt Drive
- Reversible Chipping Blades
- Self-Feeding Hoper
- Positional Discharge Deflector
- Integrated Shredder Hopper
- CAT iMatch Quick Hitch Compatible
- Shearbolt Protection PTO Drivetrain
- Oversized Heavy Duty Rotor
- Chop-Block Technology
- 360 Degree Adjustable Chute
- Angled Rotor
- Twig Breaker
- Choice of Color



	BXM32	BXM42
Chipping Capacity	3"	4"
Shredding Capacity	1"	2"
Engine HP	12-35	30-85
Chipper Hopper Opening	10" x 13"	18" x 18"
Chipper Rotor Opening	3" x 6"	4" x 10"
Shredder Hopper Opening	28" x 30"	33" x 40"
Shredder Housing Opening	10" x 10"	11" x 11"
# Of Chipper Knives	2	2
# Of Shredder Knives	27	30
Rotor Diameter	18"	25"
Rotor Weight	70 lbs.	170 lbs.
Discharge Chute Height	58"	62"
Rotor RPM	1600	1200
PTO Height	11"	27"
Dimensions	54" x 36" x 60"	72" x 44" x 62"

100-120 LEHIGH AVE.
P.O. BOX 928
BATAVIA, NY 14021
PHONE: 800-252-1552 FAX: 888-852-7406

100 STOVER DRIVE
CARLISLE, PA 17015
PHONE: 800-222-8969
FAX: 717-249-9384



CUMMINGS & BRICKER

www.cummingsandbricker.com
support@cummingsandbricker.com

Effective: 06/01/2024

F.O.B. C&B



CHIPPER SHREDDERS

TRAILED & SELF-CONTAINED CHIPPER SHREDDERS

ITEMNUMBER	DESCRIPTION	WEIGHT	PRICE
BXMC3409BYELLOW	Cart Model - 3" Chip Capacity, 3/4" Shred Capacity, 270CC Honda GX270 Engine	295	\$4,190.00
BXMT32GRED	Chipper 3" Shredder 1" Trailer 14HP Vangaurd Gravity Feed	500	\$4,830.00
BXMT3209RED	Trailer Model - 9HP Pull Start, 3" Chip Capacity, 1" Shred Capacity	400	\$5,980.00
BXMT3213YELLOW	Trailer Model - 13HP Electric Start & Pull Start, 3" Chip Capacity, 1" Shred Capacity	520	\$7,240.00



	BXMT32** Towable Models	BXMC3409B Towable/Self Contained
--	-----------------------------------	--

Chipping Capacity	3"	3"
Shredding Capacity	1"	3/4"
Engine	270 CC Honda GX270 or 389 CC Honda GX390	Vanguard 10PH (305cc)
Chipper Hopper Opening	10" x 13"	10" x 10"
Chipper Rotor Opening	3" x 6"	3" x 5"
Shredder Hopper Opening	28" x 30"	25" x 25"
Shredder Housing Opening	10" x 10"	6" x 7"
# Of Chipper Knives	2	2
# of Shredder Knives	27	12
Discharge Chute Rotation	360 Degrees	NA
Drive System	Centrifugal Clutch, Belt Drive	Brake Clutch, Belt Drive
Engine RPM	3600	3600
Rotor RPM	1600	2180
Tires	4.10 x 6 4.80 x 8 on BXMT3213	4.10 x 3.5
Dimensions	44" x 58" x 56"(BXMT3209) 44" x 60" x 58"(BXMT3213)	45" x 39" x 49"

*Models available w/screen or blower discharge, GX200 or GX270 Honda Engines

**Models available w/GX270 or GX390 Honda Engines

FEATURES

- Gravity Feed System w/Disc Chipper and Hammer Mill Shredder
- Reversible Chipping Blades
- Self-Feed Hopper
- Positional Discharge Deflector
- Chop-Block Technology
- Choice of Color



CHIPPER SHREDDER OPTIONS

ITEMNUMBER	DESCRIPTION	PRICE
1012L269	Ledger Setting Gauge	\$28.00
1082A355	Trailer Hitch - Garden Tractor For BXMC32B/34B, BXMC32BH/3409B	\$225.00
C500	Jockey Wheel For BXMC	\$395.00

100-120 LEHIGH AVE.
P.O. BOX 928
BATAVIA, NY 14021
PHONE: 800-252-1552 FAX: 888-852-7406

100 STOVER DRIVE
CARLISLE, PA 17015
PHONE: 800-222-8969
FAX: 717-249-9384



CUMMINGS & BRICKER

www.cummingsandbricker.com
support@cummingsandbricker.com

Effective: 06/01/2024

F.O.B. C&B



SKIDDING WINCHES AND SKIDDING PLATES

ITEMNUMBER	DESCRIPTION	WEIGHT	PRICE
FX40RED	4000 lb. Pull Capacity, 12-30HP, 165' Steel Cable	416	\$4,330.00
FX85RED	8500lb Pull Capacity, 30-55HP, 3/8" X 165' Steel Cable, 2 Choker Chains	470	\$5,710.00
FX110RED	11000 lb. Pul Capacity, 50-90HP, 7/16" X 165' Steel Cable, 2 Chokers	796	\$6,710.00
FX140RED	14000 lb. Pull Capacity, 80-120HP, 1/2" X 165' Steel Cable, 2 Chokers	898	\$7,180.00
FX85RRED	8500 lb. Pull Capacity, 30-55HP, 3/8" X 165' Steel Cable - Includes Factory Installed Remote Control Kit	480	\$8,130.00
FX110RRED	11000 lb. Pull Capacity, 50-90HP, 7/16"X165' Steel Cable, 2 Chokers - Includes Factory Installed Remote Control Kit	806	\$7,800.00
FX140RRED	14000 lb. Pull Capacity, 80-120HP, 1/2" X 165' Steel Cable, 2 Chokers - Includes Factory Installed Remote Control Kit	908	\$8,730.00
FX85SRED	8500 lb. Pull Capacity, 30-55HP 200' Synthetic Cable, 2 Chokers	470	\$6,700.00
FX110SRED	11000 lb. Pull Capacity, 50-90HP, 200' Synthetic Cable, 2 Chokers	796	\$7,670.00
FX140SRED	14000 lb. Pull Capacity, 80-120HP, 200' Synthetic Cable, 2 Chokers	898	\$8,840.00
FX85RS	8500 lb. Pull Capacity, 30-55HP, 200' Synthetic Cable, Remote, 2 Chokers	480	\$8,280.00
FX110RS	11000 lb. Pull Capacity, 50-90HP, 200' Synth Cable, Remote, 2 Chokers	806	\$8,890.00
FX140RS	14000 lb. Pull Capacity, 80-120HP, 200' Synth Cable, Remote, 2 Chokers	898	\$9,520.00

FX SKIDDING WINCHES

Features

- 2 Choker Chains
- Two Bar
- Factory Install Remote Models Available
- Snatch Block Pulley System
- Rope Controlled brake/clutch system
- Shearbolt protected PTO Drivetrain
- Trailer Hitch (Not available on FX40)
- 2 Keyhole Sliders



	FX40	FX85	FX110	FX140
Pulling Capacity	4000 lbs.	8500 lbs.	11000 lbs.	14000 lbs.
HP Range	12-30	30-55	50-90	80-120
Winch Type	Mechanical, Dry Disc Clutch	Mechanical, Dry Disc Clutch	Mechanical, Dry Disc Clutch	Mechanical, Dry Disc Clutch
Line Speed	103-290 ft/min	96-238 ft/min	98-253 ft/min	98-246 ft/min
Cable Diameter	3/8"	3/8"	7/16"	1/2"
Choker Chains	2	2	2	2
PTO Height	16"	16"	21"	22"
Dimensions (LxWxH)	17" x 36" x 45"	27" x 40" x 76"	28" x 51" x 79"	28" x 59" x 80"
Mount	CAT I	CAT I	CAT I / II	CAT II
Max Input Torque	N/A	265 ft-lbs	351 ft-lbs	450 ft-lbs
Max Bare Drum Pull	N/A	8553 lbs	11130 lbs	14053 lbs
Max Full Drum Pull	N/A	2992 lbs	3673 lbs	4733 lbs

SKIDDING PLATES Towable/Self-Contained



FXP30 Shown

	FXP20	FXP30
HP Range	Up to 40 HP	Up to 80 HP
Saddle Grab Hook(s)	1	2
Dimensions (L x W x H)	35" x 12" x 32"	44" x 25" x 44"
Mount	CAT I	CAT II
Four Chain Holder Slots	✓	✓
Removable Hitch	✓	✓

100-120 LEHIGH AVE.
P.O. BOX 928
BATAVIA, NY 14021
PHONE: 800-252-1552 FAX: 888-852-7406

100 STOVER DRIVE
CARLISLE, PA 17015
PHONE: 800-222-8969
FAX: 717-249-9384



CUMMINGS & BRICKER

www.cummingsandbricker.com
support@cummingsandbricker.com

Effective: 06/01/2024

F.O.B. C&B



SKIDDING WINCHES AND SKIDDING PLATES

SKIDDING PLATES

ITEMNUMBER	DESCRIPTION	WEIGHT	PRICE
FXP20	Skidding Plate - Category 1, Up To 40HP	98	\$1,850.00
FXP30	Skidding Plate - Category 1 & 2, Up To 80HP	215	\$2,130.00

FX SKIDDING WINCHES



Self-Releasing
Directional Pulley



Choker Chains



Nylon Chainsaw Holder



Logging Tongs



Synthetic Chokers

ACCESSORIES FOR WINCHES AND SKIDDING PLATES

ITEMNUMBER	DESCRIPTION	PRICE
LW91015167G70AI	Choker Chain 5/16" X 90" - Slip Hook And Rod On Ends	\$135.00
5089A100	Self Releasing Snatch Block W/Nylon Strap-Used For Re-Directing Logs Around Corners. Winch Cable Automatically Releases When The Load Gets To The Snatchblock.	\$595.00
Z99003	Skid Tongs-1"- 4.5" Minimum-25" Maximum Opening-W/3 Ft.of 3/8" Chain	\$380.00
Z92125	60" Synthetic Choker W/Rod End Chain	\$170.00
Z92126	7 ft Synthetic Choker with Rod Chain End	\$225.00
Z92124	200 ft 1/2" Synthetic Mainline with Hook Chain End	\$1,815.00
Z92123	200 ft 7/16" Synthetic Mainline with Hook Chain End	\$1,465.00

100-120 LEHIGH AVE.
P.O. BOX 928
BATAVIA, NY 14021
PHONE: 800-252-1552 FAX: 888-852-7406

100 STOVER DRIVE
CARLISLE, PA 17015
PHONE: 800-222-8969
FAX: 717-249-9384



CUMMINGS & BRICKER

www.cummingsandbricker.com
support@cummingsandbricker.com

Effective: 06/01/2024

F.O.B. C&B



LOG GRAPPLES AND LOG TRAILERS

ITEMNUMBER	DESCRIPTION	WEIGHT	PRICE
LXG210SBLACK	Mini Skidsteer - 1000# Capacity With Spring-Center Return	285	\$4,710.00
LXG320SRED	Cat I 3PH - 20-60HP, Red, 3000 lb. Lift Capacity 180 Degree Lockable Spring Return	350	\$4,950.00
LXG320RRED	Cat 1 3PH - 25-65HP, Red, 3000 lb. Lift Capacity, 360 Degree Continuous Hydraulic Rotator	353	\$5,680.00
LXG330RBLACK	Cat 2&3 3PH - 60-180HP, Red, 4500 lb. Lift Capacity, 360 Degree Continuous Hydraulic Rotator	888	\$11,460.00
LXG330S	Cat 2&3 3PH - 60-180HP, Red, 4500 lb. Lift Capacity, 180 Degree Lock Spring Return	836	\$8,160.00
LXG330RP	Boom Log Grapple w/9,000lb Warn Winch - Cat 2&3, 360 Degree Continuous Hydraulic Rotator, 60-180HP/10-20HYD/3000PSI	1229	\$17,750.00
LXG420SBLACK	Skidsteer - Black, 3000 lb. Capacity, 180 Degree Lock Spring Return	560	\$5,770.00
LXG420RBLACK	Skidsteer - Black, 3000 lb. Capacity, 360 Degree Continuous Hydraulic Rotator	588	\$6,920.00
LXG430S	Skidsteer - Black, 4500 lb. Capacity, 180 Degree Lock Spring Return	1050	\$8,970.00
LXG430RBLACK	Skidsteer - Black, 4500 lb. Capacity, 360 Degree Continuous Hydraulic Rotator	1124	\$10,920.00
LXG430RPBLACK	Boom Log Grapple Skidsteer - Black, 3000 lb. Extended Capacity/4500 lb. Retracted Capacity, 360 Degree Hydraulic Rotator	1444	\$19,960.00
LXG520R	Mini Excavator - 6750 lb. Capacity, 360 Degree Hydraulic Rotator	345	\$5,650.00
G100	Selector Valve For LXG520R		\$1,055.00

LXG 300 Series – 3 Point Hitch

Spring Centered Series: Cat I 3PH Mount and 180° lockable spring return

Hydraulic Rotator Series: Cat I 3PH Mount and 360° continuous hydraulic

PROFESSIONAL SERIES:

9,000 lb Warn Winch, Cat I 3PH & 180° Cont. hydraulic



LXG 320S:

- 51" x 52" x 43"
- 3000 lbs boom lift cap.
- 6750 lbs rotator rating
- Grapple opening 3" -48"
- Clamp force 9400 lbs
- Rec. 20-60 HP



LXG 330S

- 70" x 76" x 56"
- 4500 lbs boom lift cap.
- 9000 lbs rotator rating
- Grapple opening 3" -72"
- Clamp force 21000 lbs
- Rec. 60-180 HP



LXG 320R

- 51" x 52" x 46"
- 3000 lbs boom lift cap.
- 6750 lbs rotator rating
- Grapple opening 3" -48"
- Clamp force 9400 lbs
- Rec. 25-65 HP



LXG 330R

- 68" x 76" x 67"
- 4500 lbs boom lift cap.
- 9000 lbs rotator rating
- Grapple opening 3" -72"
- Clamp force 21000 lbs
- Rec. 60-180 HP



LXG 330RP

- 68" x 76" x 70"
- 4500 lbs boom lift cap.
- 9000 lbs rotator rating
- Grapple opening 3" -72"
- Clamp force 21000 lbs
- Rec. 60-180 HP

LXG 400 Series – Skid Steer

Spring Centered Series: Standard skid steer quick attach and 180° lockable spring return

Hydraulic Rotator Series: Standard skid steer quick attach & 360° continuous hydraulic

PROFESSIONAL SERIES:

Standard skid steer quick attach, 9,000 lb Warn Winch, 180° Cont. hydraulic



LXG 420S

- 51" x 52" x 44"
- 3000 lbs boom lift cap.
- 6750 lbs rotator rating
- Grapple opening 3" -48"
- Clamp force 9400 lbs



LXG 430S

- 69" x 76" x 53"
- 4500 lbs boom lift cap.
- 6750 lbs rotator rating
- Grapple opening 3" -48"
- Clamp force 9400 lbs



LXG 420R

- 51" x 52" x 47"
- 3000 lbs boom lift cap.
- 6750 lbs rotator rating
- Grapple opening 3" -48"
- Clamp force 9400 lbs



LXG 430R

- 67" x 76" x 67"
- 4500 lbs boom lift cap.
- 9000 lbs rotator rating
- Grapple opening 3" -72"
- Clamp force 21000 lbs



LXG 430RP

- 67" x 76" x 70"
- 4500 lbs boom lift cap.
- 9000 lbs rotator rating
- Grapple opening 3" -72"
- Clamp force 21000 lbs

LXG 200 Series – Mini Skid Steer

Spring Centered Series: Mini Skid steer Mount, 180° lockable spring return

LXG520R Series – Mini-Excavator

360° Hydraulic Rotator: Mini-Excavator



- 47" x 44" x 40"
- 1000 lbs boom lift cap.
- 6750 lbs rotator rating
- Grapple Opening 3" – 38"
- Grapple Cylinder clamp force 9400 lbs
- Rec. 20-40 lbs



- 51" x 52" 20"
- 6750 lbs boom lift capacity
- Clamp Force 9400 lbs
- Grapple opening 3" – 48"
- Clamp force 9400 lbs
- Rec. hydraulic flow 5 GPM

100-120 LEHIGH AVE.
P.O. BOX 928
BATAVIA, NY 14021
PHONE: 800-252-1552 FAX: 888-852-7406

100 STOVER DRIVE
CARLISLE, PA 17015
PHONE: 800-222-8969
FAX: 717-249-9384



CUMMINGS & BRICKER

www.cummingsandbricker.com
support@cummingsandbricker.com

Effective: 06/01/2024

F.O.B. C&B



LOG GRAPPLES AND LOG TRAILERS TRAILERS

****Wallenstein Net Price Items - REQUEST A QUOTE****

ITEMNUMBER	DESCRIPTION	WEIGHT
LXT95	Log Loader Trailer - Off Road, Self Contained, 5000 lb. Trailer Capacity, Includes Log Loader, Trailer, and Engine Power Pack	1650
LXT115RED	Log Loader Trailer - Highway, Self Contained, 10000 lb. Trailer Capacity, Includes Log Loader, Trailer, and Engine Power Pack	2470

LXT95 OFF-ROAD Towable/Self-Contained



Load Capacity	5000 lbs.
Lift Capacity	800 lbs.
Engine	Vanguard 6.5HP Engine
Grapple Opening	3"-30"
Grapple Rotation	360°
Boom Rotation	270°
Trailer Bed Length	96"
Sliding Axle	Hydraulic
Tires	27 x 10.5 x 15-8 Ply
Hitch	2" Ball
Brakes	Surge
Dimensions (LxWxH)	161" x 64" x 58"

LXT115 HIGHWAY Towable/Self-Contained



Load Capacity	11500 lbs.
Lift Capacity	1200 lbs.
Engine	Vanguard 10 HP Engine
Grapple Opening	3"-40"
Grapple Rotation	360°
Boom Rotation	270°
Trailer Bed Length	132"
Sliding Axle	N/A
Tires	ST235-80R16 LRE
Hitch	2-5/16" Ball
Brakes	Electric
Dimensions (LxWxH)	198" x 68" x 60"

FEATURES For both the LXT95 & 115



SELF-CENTERING BUNK POSTS



HYDRAULIC STABILIZERS



WALK BEAM AXLE



5 STICK CONTROL W/ SWIVEL Boom operational from either side of the trailer.



270° BOOM SWING RANGE AND 360° HYDRAULIC ROTATION

100-120 LEHIGH AVE.
P.O. BOX 928
BATAVIA, NY 14021
PHONE: 800-252-1552 FAX: 888-852-7406

100 STOVER DRIVE
CARLISLE, PA 17015
PHONE: 800-222-8969
FAX: 717-249-9384



CUMMINGS & BRICKER

www.cummingsandbricker.com
support@cummingsandbricker.com

Effective: 06/01/2024

F.O.B. C&B



LOG GRAPPLES AND LOG TRAILERS TRAILERS

ACCESSORIES

ITEMNUMBER	DESCRIPTION	WEIGHT	PRICE
L310	Dump Box Kit For LXT95 Trailers - 25 Cu. Ft. Capacity	270	\$2,100.00
L620	Dump Box Kit For LXT115 Trailers - 40 Cu.Ft. Capacity	355	\$2,570.00
L330	Flat Bed Kit For LXT95 Trailers - 5' X 9' Expanded Metal Bed	420	\$2,745.00
L630	Flat Bed Kit For LXT115 - 5'8" X 10'6" Expanded Metal Bed	570	\$3,250.00
L1400	Hydraulic Winch Kit For LXT95		\$2,680.00
L3200	Hydraulic Winch Kit For LXT115	135	\$2,805.00
L640	Pintle Hitch Kit	17	\$540.00
LA610	Hydraulic Auger Kit - 6" X 42" For LX95/LX115	55	\$790.00
LA910	Hydraulic Auger Kit - 9" X 42" For LX95/LX115	80	\$920.00
LB09	Backhoe Kit 9" Bucket - LXT95/115		\$1,380.00
LB12	Backhoe Kit 12" Bucket - LXT95/115		\$1,430.00
LB15	Backhoe Kit 15" Bucket - LXT95/115		\$1,490.00
LB18	Backhoe Kit 18" Bucket - LXT95/115		\$1,550.00

OPTIONAL ACCESSORIES *For both the LXT95 & 115*



AUGER KITS 6" & 9" diameter augers kits available. Bit included.



BUCKET KIT Includes linkage, cylinder, hosing, pins, & bucket (12", 15" & 18").



DUMP BOX Requires log loader to operate.



EXPANDED METAL FLAT BED Convert your log trailer to a flatbed.



HYDRAULIC WINCH

100-120 LEHIGH AVE.
P.O. BOX 928
BATAVIA, NY 14021
PHONE: 800-252-1552 FAX: 888-852-7406

100 STOVER DRIVE
CARLISLE, PA 17015
PHONE: 800-222-8969
FAX: 717-249-9384

**CUMMINGS & BRICKER**www.cummingsandbricker.com
support@cummingsandbricker.com

Effective: 06/01/2024

F.O.B. C&B

**BACKHOES****BACKHOE MODELS**

ITEMNUMBER	DESCRIPTION	WEIGHT	PRICE
GE605	Backhoe 6'4" Digging Depth Add Mtg Kit & Bucket	500	\$7,100.00
GX620	Backhoe 6'4" Digging Depth Add Mtg Kit & Bucket	575	\$8,250.00
GX720	Backhoe 7'8" Digging Depth Add Mtg Kit & Bucket	765	\$9,880.00
GX920BLACK	Backhoe 9'4" Digging Depth Add Mtg Kit & Bucket	791	\$12,770.00
GX920XTBLACK	Backhoe Extendable Reach 9'4"-11'4" Hydraulically Retractable Foot Pedal Control	950	\$13,700.00
QC620	Skidsteer Backhoe 6' Digging Depth-Add Bucket	250	\$3,430.00

AVAILABLE MOUNTING KITS

ITEMNUMBER	DESCRIPTION	PRICE
PT302	3 Point Hitch Kit-Cat I - Fits All Models Except GE605 - Includes Turnbuckle Tie-Down	\$945.00
PT322	3 Point Hitch Kit Cat II - GX700/720/GX900/920 - Includes Turnbuckle Tie-Down	\$1,055.00
SF***	Subframe Mounting Kit (See Chart) Note: Some Tractors May Require Wheel Spacers After Subframe Mounitng.	\$1,835.00
SQ500	Skidsteer Universal QA Mount 44" Wide GX720 & GX920 (Add TB Tieback) Includes Flat Faced Couplers	\$1,835.00
TB**	Tie Back Kit For SQ400 And SQ500 Quick Attach-Specify Skidsteer Model	\$585.00

Backhoe Specifications	GE605	GX620	GX720	GX920	GX920XT
Transport Height (with boom fully retracted)	64.5"	63"	79"	92"	92"
Transport Width (with stabilizers up)	41	40"	42 1/2"	42 1/2"	42 1/2"
Loading Height (bucket at 60° rotation)	62"	62"	80"	89"	89"/104"
Ground Clearance	8 1/2"	10 1/2"	10 1/2"	10 1/2"	10 1/2"
Transport Length	56"	68"	80"	81"	81"
Transport Weight	500 lbs.	575 lbs.	800 lbs.	850 lbs.	1000 lbs.
Digging Depth (2 ft. flat bottom)	6'4"	6'4"	7'8"	9'4"	9'4"/11'4"
Overall Operating Height (fully raised)	91"	92"	119"	135"	135"/152"
Reach from Swing Post	100"	100"	123"	141"	141"/164"
Bucket Rotation	180°	180°	180°	180°	180°
Swing Arc	150°	180°	180°	180°	180°
Stabilizer Width (spread)	72"	74"	89"	89"	89"
Stabilizer Width (transport)	41"	40"	42 1/2"	42 1/2"	42 1/2"
Operating Pressure	1800 psi	1800 psi	2250 psi	2250 psi	2250 psi
SAE* Dipper Boom Digging Force	1250 lbs.	1250 lbs.	2300 lbs.	3200 lbs.	3100/2200 lbs.
SAE* Bucket Digging Force	2054 lbs.	2600 lbs.	3800 lbs.	3925 lbs.	3925 lbs.
Boom Lift Capacity (at end of dipper 3' from the ground)		385 lbs.	925 lbs.	750 lbs.	710/580 lbs.
Hydraulic Volume Requirements	3 1/2-6 gpm*	5-7 gpm	5-7 gpm	5-7 gpm	5-7gpm*
Recommended Tractor HP	18-28 HP	18-30 HP	30-60 HP	30-100 HP	30-100 HP
Recommended Skidsteer Requirements (SSQT)	Mini Skidsteer	Mini Skidsteer	30-60	45-100	45-100
Bucket Sizes Available	9,12,15,18	9,12,15,18	9,12,15,18,24	9,12,15,18,24	9,12,15,18,24
3 Point Hitch	n/a	CAT I (PT300)	CAT I (PT300) CAT II (PT322)	CAT I (PT300) CAT II (PT322)	CAT I (PT300) CAT II (PT322)
Main Boom Cylinder Diameter	2.5"	2.5"	3"	3"	3"
All Other Cylinder Diameters	2", 2" (Stabilizer, Swing)	2 1/4", 2" (Stabilizer, Swing)	2.5" (dipper), 2 1/2"	3" (dipper), 2 1/2"	3", 2.5" (Stabilizer, Swing)

100-120 LEHIGH AVE.
P.O. BOX 928
BATAVIA, NY 14021
PHONE: 800-252-1552 FAX: 888-852-7406100 STOVER DRIVE
CARLISLE, PA 17015
PHONE: 800-222-8969
FAX: 717-249-9384



CUMMINGS & BRICKER

www.cummingsandbricker.com
support@cummingsandbricker.com

Effective: 06/01/2024

F.O.B. C&B



BACKHOES

AVAILABLE BUCKETS & PUMP KIT

ITEMNUMBER	DESCRIPTION	PRICE
BK2609	Bucket 9" GE605/GX620 3 Teeth .5115 cu.ft.	\$645.00
BK2612	Bucket 12" GE605/GX620 3 Teeth .6934 cu.ft.	\$685.00
BK2615	Bucket 15" GE605/GX620 4 Teeth .8749 cu.ft.	\$740.00
BK2618	Bucket 18" GE605/GX620 4 Teeth 1.0567 cu.ft.	\$765.00
BK2900	Bucket 9" GX720/GX920/QC620 3 Teeth .8416 cu.ft.	\$870.00
BK2120	Bucket 12" GX720/GX920/QC620 3 Teeth 1.1694 cu.ft.	\$890.00
BK2150	Bucket 15" GX720/GX920/QC620 4 Teeth 1.4806 cu.ft.	\$965.00
BK2180	Bucket 18" GX720/GX920/QC620 4 Teeth 1.7912 cu.ft.	\$1,010.00
BK2240	Bucket 24" GX720/GX920/QC620 5 Teeth 2.413 cu.ft.	\$1,175.00
BK2240D	Bucket 24" GX720/GX920/QC620 No Teeth 2.413 cu.ft.	\$1,080.00
BT7220	Quick Change Bucket Adapter GX720/920/920XT	\$645.00
BT5280	Thumb For Backhoe - Clamp On Mechanical - GE605/GX620	\$675.00
BT5290	Thumb For Backhoe - Clamp On Mechanical - GX720/GX920	\$805.00
BT5300	Thumb For Backhoe - Hydraulic - Factory Install Only - GX720/GX920	\$1,985.00
BT5310	Thumb For Backhoe - QC620 - Clamp On Mechanical - GX620	\$805.00
BT5340	Thumb For Backhoe - Bolt On - John Deere 260 Series **Limited Quantities**	\$710.00
BT5330	Thumb For Backhoe - Clamp On Mechanical - GX920XT	\$805.00
PTO605	Pump Kit-GE605	\$1,770.00
PTO62	Pump Kit-GX620-7GPM	\$1,835.00
PTO72	Pump Kit-GX720/GX920-7GPM	\$1,835.00
BT7230	Ripper Tool GX720/920	\$620.00
BT7251	Operator Seat For GE605 Backhoe	\$665.00
BP220	Rubber Street Pads GE605	\$395.00
BP230	Street Pad Kit GX720/GX920	\$300.00
BT7240	Vertical Stabilizer-GX720/920/920XT	\$1,565.00

WALLENSTEIN RANCHHO BACKHOES:



GE605



GX620



GX720



GX920



GX920T



QC620

OPTIONAL THUMBS:



Hydraulic



Universal
Weld-On



Mechanical



100-120 LEHIGH AVE.
P.O. BOX 928
BATAVIA, NY 14021
PHONE: 800-252-1552 FAX: 888-852-7406

100 STOVER DRIVE
CARLISLE, PA 17015
PHONE: 800-222-8969
FAX: 717-249-9384



CUMMINGS & BRICKER

www.cummingsandbricker.com
support@cummingsandbricker.com

Effective: 06/01/2024

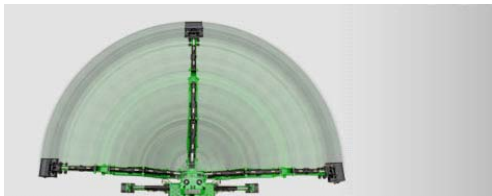
F.O.B. C&B



BACKHOES

AVAILABLE BUCKETS & PUMP KIT

Backhoe Features



Swing cushioning

Working efficiently means working smoothly, digging and swinging in rhythm. Swinging the boom is controlled by cushioning hydraulic cylinders that reduce machine shake by slowing the boom as it reaches the furthest ends of the swing range.



Curved Boom

The right geometry makes the job easier with the over-arching design of the new curved boom. Dig deep without impacting the edge of the excavation. This protects the backhoe from unnecessary damage and prevents ground from falling back into the hole.



Mounting Configurations

The Ranchho can be mounted on a subframe, 3-point hitch or skidsteer. All are easy to disconnect and re-attach on the go without wasting time.



Dual Cylinder Boom Pivot

All Ranchho models, including the GX620, use two hydraulic cylinders to control the boom swing. The dual cylinders provide strong, consistent movement throughout the entire 180-degree swing range.



Greaseable Pins

Maintaining your Ranchho is easy with greaseable pins in all the pivot points. Regular servicing keeps your Ranchho ready to go and greaseable pins makes it a simple process.



Stabilizers

Stabilizers widen the centre of gravity, making the narrow profile sturdier when swinging the boom laterally.



Pick your Color

The Wallenstein Ranchho is available in the following colors: Red, Orange, Green, Blue, Yellow, Grey, Black & Realtree Edge™ Camouflage (additional charges apply).



Replaceable Teeth

On the bucket, the hardened steel teeth are designed for long-lasting service. When it is time for new teeth they are easily replaceable.

100-120 LEHIGH AVE.
P.O. BOX 928
BATAVIA, NY 14021
PHONE: 800-252-1552 FAX: 888-852-7406

100 STOVER DRIVE
CARLISLE, PA 17015
PHONE: 800-222-8969
FAX: 717-249-9384



CUMMINGS & BRICKER

www.cummingsandbricker.com
support@cummingsandbricker.com

Effective: 06/01/2024

F.O.B. C&B



MANURE SPREADERS

ITEMNUMBER	DESCRIPTION	WEIGHT	PRICE
MX25G	Manure Spreader 25 Bushel - Ground Driven, Jack Stand	510	\$4,720.00
MX50GRAY	Manure Spreader 50 Bushel-Ground Driven-Includes Flat Bottom Jack Stand	795	\$7,750.00
MX50PGRAY	Manure Spreader 50 Bushel- Pto Driven-Includes Flat Bottom Jack Stand	795	\$7,710.00
MX80GRAY	Manure Spreader 80 Bushel-Ground Driven-Includes Flat Bottom Jack Stand	920	\$8,080.00
MX80PGRAY	Manure Spreader 80 Bushel- Pto Driven-Includes Flat Bottom Jack Stand	1160	\$8,460.00
MX130P	Manure Spreader 130 Bushel-PTO Drive-11L-15 Tires	2180	\$18,860.00

OPTIONS

ITEMNUMBER	DESCRIPTION	WEIGHT	PRICE
M7550	Fines Pan-MX25	22	\$460.00
M7610	Fines Pan MX50	35	\$530.00
M7570	End Gate MX50P	82	\$820.00
M7590	Fines Pan MX80	30	\$545.00
M7580	End Gate MX80G/MX80P	93	\$870.00
M7620	Fines Pan-MX130	35	\$1,585.00
M7630	End Gate-MX130		\$2,225.00
M7640	Upper Beater-MX130	35	\$1,685.00

	MX25	MX50	MX80	MX130P
CAPACITY	25 Bushels	50 Bushels	80 Bushels	130 Bushels
DRIVE	Ground Driven	Ground or PTO Drive	Ground or PTO Drive	PTO Drive
BOX DIMENSIONS (LxWxH)	72" x 26" x 15"	89" x 32" x 17"	102" x 38" x 20"	130" x 48" x 23"
DIMENSIONS (LxWxH)	117" x 48" x 29"	156" x 57" x 36"	168" x 63" x 37"	214" x 79" x 42"
BOX CONSTRUCTION	Corrosion Resistant carbon Steel – Powder Coated			
TIRES	6 x 12 – 5 Bolt	7.6 x 15 – 5 Bolt	7.6 x 15 – 5 Bolt	11L-15SL
NUMBER OF PADDLES	8	10	10	10
APRON DRIVE	Chain & Sprocket			
FLOOR CONSTRUCTION	Rustproof Tongue and Groove Polyethylene Floor			
WEIGHT w/TIRES	510 lb.	795 lb.	868 lb.	2180 lb.
TONGUE WEIGHT	34 lb.	50 lb.	56 lb.	330 lb.



100-120 LEHIGH AVE.
P.O. BOX 928
BATAVIA, NY 14021
PHONE: 800-252-1552 FAX: 888-852-7406

100 STOVER DRIVE
CARLISLE, PA 17015
PHONE: 800-222-8969
FAX: 717-249-9384



CUMMINGS & BRICKER

www.cummingsandbricker.com
support@cummingsandbricker.com

Effective: 06/01/2024

F.O.B. C&B

MANURE SPREADERS

OPTIONS



Keep your stable clean and tidy with the easy-to-use MX Manure Spreader from Wallenstein. Designed for equine facilities and hobby farms, the MX Manure Spreader is the perfect size to handle manure from barn to field without the mess. You can choose between PTO drive or ground-drive spreading options to suit your tractor's capabilities.



Wallenstein compact manure spreaders feature a one piece welded bed frame for durability, made from tubular steel. Frames start with a strong foundation and are built up using sturdy, heavy gauge steel construction. The job is finished with a baked on powder coated paint.



Wallenstein manure spreaders have 3 levels of unloading speed affecting the apron chain. A few quick moments is all it takes to get the right coverage for your application needs.



The optional endgate is the ultimate way to control delivery. Close the endgate to eliminate spills during filling or on the way from stable to pasture. The endgate manually opens transforming the spreader to a fully functional utility holding trailer for all of your yard needs



Unlike metal and wood, tongue and groove Poly-Floor boards are resistant to weather and extend the life of your spreader. They will not rust and are flexible making them virtually indestructible.



The optional fines pan is a great way to ensure larger chunks remain exposed to the beaters longer, breaking them into fine components.

The right paddle design gives the MX Series spreaders the advantage for a finer spread, greatly reducing the delivery of large clumps with the dual ability to rip and shred evenly.



Wallenstein MX Spreaders are built ready. Easy operation means just load and go.

100-120 LEHIGH AVE.
P.O. BOX 928
BATAVIA, NY 14021
PHONE: 800-252-1552 FAX: 888-852-7406

100 STOVER DRIVE
CARLISLE, PA 17015
PHONE: 800-222-8969
FAX: 717-249-9384