



CUMMINGS & BRICKER

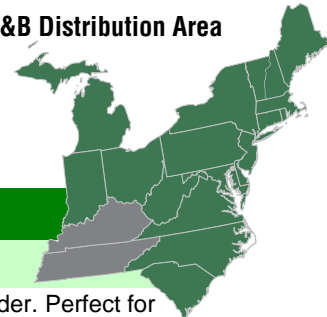
www.cummingsandbricker.com
support@cummingsandbricker.com

Click here for ordering programs - Select Program #4 from bookmarks

Effective: 08/22/2024

F.O.B. C&B

=C&B Distribution Area



LANDSCAPER

LANDSCAPER

THE LANDSCAPER does the work of a clodbreaker/pulverizer, harrow, box grader, ripper and grass seeder. Perfect for golf course builders, commercial landscapers, public works departments, earthscaping, construction sites, or any project requiring grading and reconditioning of soil or gravel surfaces.



Landscaper CAT I widths available from 48" to 96"



Landscaper CAT II 96" wide

ITEMNUMBER	DESCRIPTION	PRICE
RP48	48" Landscaper - Box Grader Blade Rolling Pulverizer Reel, CAT I	\$3,710.00
RP60	60" Landscaper - Box Grader Blade, Rolling Pulverizer Reel, CAT I	\$4,183.00
RP72	72" Landscaper - Box Grader Blade Rolling Pulverizer Reel, CAT I	\$4,566.00
RP84	84" Landscaper - Box Grader Blade Rolling Pulverizer Reel, CAT I	\$5,350.00
RP96	96" Landscaper - Box Grader Blade Rolling Pulverizer Reel, CAT I	\$6,200.00
RP96H	96" Landscaper - Box Grader Blade Rolling Pulverizer Reel, CAT II	\$7,880.00

AVAILABLE OPTIONS FOR LANSCAPERS

Grass Seeder Attachment

- Two-pin mounting system Seed rate adjustment with indicator
- Manual or opt. hydro-controlled seed opener
- Available widths: 48", 60", 72", 84", & 96"



Seeder
*Available on CAT II Model

Ripper Attachment

- 1/2" thick x 2" wide bolt-on ripper teeth
- High-strength, stress proof ripper bar
- Manual adjustment from 0-5" ripper depth
- Available widths: 60", 72", 84", & 96"



Ripper

Ripper Cylinder

- Replaces manual ratchet jack to control ripper tooth depth hydraulically



*Available on CAT II Model

Harrow Attachment

- Hardened 5/8" square teeth spaced at 2" removes trash on surface
- Mixes seed into soil w/seeder attachment
- Manual adjustment from 0-4" deep



Harrow

Harrow Cylinder

- Replaces manual ratchet jack to control harrow tooth depth hydraulically



Harrow Cylinder

Rear Brush Attachment

- Brushed finish on walking trails
- Break-away wings to smooth out side ridges
- Adjustable brush depth w/two top wind jacks
- Available widths: 48", 60", 72", 84", & 96"



*Available on CAT II Model

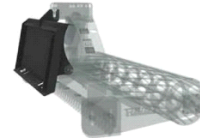
Smooth Roller Attachment

- Smooth flat finish on soil, sand or synthetic equestrian footings
- Self-adjusting scraper bar
- Water can be added to roll



Smooth Roll

6" Hitch Extensions



Hitch Adapter, Skid Steer (Push and Pull)



Hitch Adapter, Hydraulic Tilting Skid Steer (Push and Pull)



Top Link Cylinder

- Top link grading control
- 10" or 14" stroke
- Ball ends



Tiller Attachment

- PTO driven, 540 RPM
- Available widths: 60" & 72"
- Self-resetting cam clutch



Tiller

Board Scraper Attachment



100-120 LEHIGH AVE.
P.O. BOX 928
BATAVIA, NY 14021
PHONE: 800-252-1552 FAX: 888-852-7406

100 STOVER DRIVE
CARLISLE, PA 17015
PHONE: 800-222-8969
FAX: 717-249-9384



LANDSCAPER

LANDSCAPER

OPTIONAL ATTACHMENT

ITEMNUMBER	DESCRIPTION	PRICE
RH48	48" Harrow Attachment	\$1,073.00
RH60	60" Harrow Attachment	\$1,225.00
RH72	72" Harrow Attachment	\$1,390.00
RH84	84" Harrow Attachment	\$1,492.00
RH96	96" Harrow Attachment	\$1,706.00
RIP60	60" Ripper Attachment, CAT I Only	\$2,303.00
RIP72	72" Ripper Attachment, CAT I Only	\$2,666.00
RIP7884	78" / 84" Ripper Attachment, CAT I Only	\$2,757.00
RIP96	96" Ripper Attachment, CAT I Only	\$4,079.00
RIP96H	96" Ripper Attachment, CAT II Only	\$4,079.00
RGS48	48" Grass Seeder Attachment	\$4,257.00
RGS60	60" Grass Seeder Attachment	\$4,397.00
RGS72	72" Grass Seeder Attachment	\$4,619.00
RGS84	84" Grass Seeder Attachment	\$5,059.00
RGS96	96" Grass Seeder Attachment	\$5,435.00
BR48	48" Brush Attachment	\$1,797.00
BR60	60" Brush Attachment	\$1,888.00
BR72	72" Brush Attachment	\$1,946.00
BR84	84" Brush Attachment	\$2,173.00
BR96	96" Brush Attachment	\$2,400.00
505548	48" Smooth Roller - IN LIEU OF Pulverizer Roller	\$943.00
505560	60" Smooth Roller - IN LIEU OF Pulverizer Roller	\$1,101.00
505572	72" Smooth Roller - IN LIEU OF Pulverzier Roller	\$1,169.00
505584	84" Smooth Roller - IN LIEU OF Pulverizer Roller	\$1,296.00
505596	96" Smooth Roller - IN LIEU OF Pulverizer Roller	\$1,484.00
SRH48	48" Spike Rolling Harrow - For Landscaper	\$2,400.00
SRH60	60" Spike Rolling Harrow - For Landscaper	\$2,581.00
SRH72	72" Spike Rolling Harrow - For Landscaper	\$2,659.00
SRH84	84" Spike Rolling Harrow - Landscaper	\$2,951.00
SRH96	96" Spike Rolling Harrow - For Landscaper	\$3,210.00
LBS	Board Scraper	\$957.00

HITCH OPTIONS

ITEMNUMBER	DESCRIPTION	PRICE
CATIAP	CAT I Quick Hitch Adapter Plate For Skid Steer	\$1,173.00
CATIIAP	CAT II Quick Hitch Adapter Plate For Skid Steer	\$1,267.00
FMH	Push/Pull Hitch	\$1,777.00
PFMH	Push/Pull Hitch With Hydraulic Angling	\$3,437.00
1000HE	6" CAT I Hitch Extension Set	\$694.00

HYDRAULIC OPTIONS

ITEMNUMBER	DESCRIPTION	PRICE
HTC	Hydraulic Top Link - 10" Stroke CAT I And II	\$417.00
HTC14	Hydraulic Top Link - 14" Stroke CAT II	\$427.00
20FEM08NW	2" x 8" Ripper Cylinder	\$369.00
CYLS	2" x 5" Harrow Cylinder	\$403.00
HKIT	Hose Kit With Male Pioneer Ends	\$198.00



AERASEEDERS

SELF PROPELLED AERASEEDER



24" SELF PROPELLED AERASEEDER

Simple, yet accurate initial and overseeding in those hard to get to places. The multi-spiked roller produces approximately 800 perforations per square yard, effectively saturating the top surface with a network of holes. This network, combined with our stainless steel seed apertures, brush, and smooth packing roller system, offer you the highest percentage of grass seed germination.

- Honda engine w/Easton Hydrostatic Drive
- Seed calibration tray
- Gauge wheel kit, w/quick release wheels
- Weight bracket



48" AERASEEDER

3PH mounted or towable, the Aeraseeder is efficient and easy to use. The internal agitator and bearing assembly deliver a smooth, constant seed flow. The seed rate is achieved through an innovative locking knob adjustment control, allowing for maximum seed-spread accuracy. The seed flow is turned on/off by a manual or hydraulic lever mechanism. 3PH or towable models available.



72" & 96" AERASEEDER

The 3PH mounted Aeraseeder is the tool for professionals and groundskeepers. The tandem rollers oscillate 30 degrees on a pivot, allowing for consistent ground contact on rolling terrain.

	24" Seeder	48" Seeder	72" Seeder	96" Seeder
Seed Bin Capacity	1.25 bushel	4.75 bushel	12 bushel	16 bushel
Hitch	NA	CAT I	CAT I	CAT I
Overall Width	34"	51"	81"	105"

ITEMNUMBER	DESCRIPTION	PRICE
AOSCS24SP	24" Self Propelled Aeraseeder Front Cone & Rear Smooth	\$10,268.00
AOSCC24SP	24" Self Propelled Aeraseeder Front Cone & Rear Cone	\$11,819.00

SELF PROPELLED AERASEEDER OPTIONS

ITEMNUMBER	DESCRIPTION	PRICE
AOS24GWKIT	Gauge Wheel Kit - For AOS24 Self Propelled Models	\$1,517.00
4X8GW	8" Diameter X 4" Wide (Solid Delrin) Gauge Wheel Set - PRICE PER SET	\$758.00
WB	Weight Bracket	\$115.00
45LBW	45lb Suitcase Weight	\$216.00
AOS24CC	Rear Spike Roller Kit	\$1,771.00



AERASEEDERS

3PH AERASEEDERS

ITEMNUMBER	DESCRIPTION	PRICE
AOSCS48	48" 3 Point Hitch Aeraseeder - Front Cone & Rear Smooth	\$11,034.00
AOSCS60	72" 3 Point Hitch Aeraseeder - Front Cone & Rear Smooth	\$14,564.00
AOSCS72	72" 3 Point Hitch Aeraseeder - Front Cone & Rear Smooth	\$15,947.00
AOSCS96	96" 3 Point Hitch Aeraseeder - Front Cone & Rear Smooth	\$20,414.00
AOSCC48	48" 3 Point Hitch Aeraseeder - Front Cone & Rear Cone	\$12,613.00
AOSCC72	72" 3 Point Hitch Aeraseeder - Front Cone & Rear Cone	\$17,734.00
AOSCC96	96" 3 Point Hitch Aeraseeder - Front Cone & Rear Cone	\$22,455.00
AOSKK48	48" 3 Point Hitch Aeraseeder - Front Knife & Rear Knife	\$12,613.00
AOSKK72	72" 3 Point Hitch Aeraseeder - Front Knife & Rear Knife	\$17,734.00
AOSKK96	96" 3 Point Hitch Aeraseeder - Front Knife & Rear Knife	\$22,455.00
AOSKS48	48" 3 Point Hitch Aeraseeder - Front Knife & Rear Smooth	\$11,034.00
AOSKS72	72" 3 Point Hitch Aeraseeder - Front Knife & Rear Smooth	\$15,947.00
AOSKS96	96" 3 Point Hitch Aeraseeder - Front Knife & Rear Cone	\$20,414.00

3P AERASEEDER OPTIONS

ITEMNUMBER	DESCRIPTION	PRICE
MSSSO	Manual Shut-Off Kit - 48" Models	\$579.00
2AOS48TB	48" 3PH Toolbar Mount	\$3,623.00
2AOS72TB	72" 3PH Toolbar Mount	\$4,053.00
3AOS48TB	48" 3PH Toolbar Mount	\$9,469.00
3AOS72TB	72" 3PH Toolbar Mount	\$9,860.00
48RCSREXT	48" Rear Roller Ext Kit	\$1,158.00
72RCSREXT	72" Rear Roller Ext Kit	\$1,545.00
96RCSREXT	96" Rear Roller Ext Kit	\$2,009.00
TD48	Tow Dolly	\$1,210.00

AVAILABLE OPTIONS AERA SEEDERS



CONE & SMOOTH ROLL
 Application: Primary and Overseeding



DOUBLE CONE ROLLS
 Application: Overseeding



KNIFE ROLLS
 Application: Overseeding



REAR ROLL EXTENSION
 Extends rear-spiked roller and brush back 7" for optimum ground contact and smoother operation. Stand-on platform for easy loading of hopper



OPTIONAL REAR WEIGHT BRACKET



45-POUND WEIGHT



TOOL BAR – TWO 72" AERASEEDERS
 CAT II Hitch Hydraulic control for seed slide opener



TOOL BAR – THREE 72" AREASEEDERS
 CAT II Hitch Hydraulic control for seed slide opener



IN-FIELDER DRAG MAT

IN-FIELDER

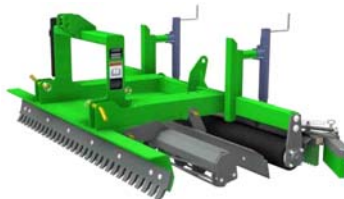
ITEMNUMBER	DESCRIPTION	PRICE
D60	60" In-Fielder - CAT I	\$5,742.00
D72	72" In-fielder - CAT I	\$10,022.00
D84	84" In-fielder - CAT II	\$10,718.00

IN-FIELDER OPTIONS

ITEMNUMBER	DESCRIPTION	PRICE
RLTR60	Rear Long Tine Rake - For D60 Infielder	\$1,283.00
RLTR72	Rear Long Tine Rake - For D72 Infielder	\$1,693.00
RLTR84	Rear Long Tine Rake - Hydraulic For D84 Infielder	\$2,444.00
WT50G	50 Gal Water Tank, Pump, Switch & Nozzle	\$1,931.00
HWK	Hand Wand Kit	\$252.00
WTFN	Front Nozzle Kit W/Pump & Switch - For Infielder	\$1,100.00
ITA	Tow Kit With Wheels, Manual Lift W/ Ratchet Jacks-Not For Highway Use	\$2,021.00
ITAEX	Tow Kit Extended For D72 With Harrow W/Wheels, Manual Lift W/ Ratchet	\$2,254.00
EAC100AS	Electric Actuator 100MM Stroke	\$1,573.00
RSB20	Rotary Sweeper Brush 20" Dia, Hyd Driven - Fits All Models	\$4,084.00



60" In-fielder



72" In-fielder



84" In-fielder

The Reist In-fielders are a heavy duty, time-saving ball diamond groomers and are available in 60", 72" & 84" widths. Operation couldn't be easier to turn a hard, uneven baseball diamond into a smooth and level playing surface.

Two adjustments allow you to change cutting depth of the blade & the brush height adjustment (60" & 72" models only)

FEATURES

- Heavy duty bolt-on serrated grader blade
- Floating clod-breaking pulverizer roller
- Heavy duty floating leveling bar
- Adjustable rear brush
- Spinning rotor pulverizes & separates root balls & stone dust

OPTIONS

- Tow Kit with Wheels (60" & 72" Models only)
- Water Tank
- Rear Long Tine Rake
- Rotary Sweeper
- Edger Attachment (84" Models only)

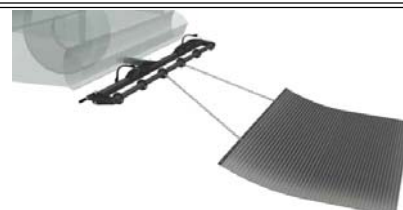
	60"	72"	84"
Packer Roller	6" steel roller with floating scraper	Six sections of 6" diameter x 12" long solid UHMW material	Seven sections of 6" diameter x 12" long solid UHMW material
Weight	620 lbs.	675 lbs.	800 lbs.
Hitch	CAT I	CAT I	CAT I

DRAG MAT

ITEMNUMBER	DESCRIPTION	PRICE
DM66	66" Drag Mat - Roll-Up, Fits 2" Hitch Receiver	\$1,708.00
DM84	84" Drag Mat - Roll-Up, Fits 2" Hitch Receiver	\$1,924.00
DMHEX	Hitch Extension/Adapter - Raises 4" Extends 6" Back For Drag Mats	\$177.00

DRAG MAT smooths out your stone dust, gravel, or topsoil surface with your pickup truck or UTV.

- Rolls up behind your bumper to transport with unique crank, folding handle and lock system
- Fits onto any 2" trailer hitch receiver





POWER SPUR

ITEMNUMBER	DESCRIPTION	WEIGHT	PRICE
PS72	Power Spur 72" - Skid Steer Mount, Bolt-On-Adapter To Attach Bucket To Front	720	\$10,484.00
PS84	Power Spur 84" - Skid Steer Mount, Bolt-On-Adapter To Attach Bucket To Front	770	\$11,079.00
PSWA	Power Spur Wheel Attachments PS72/PS84		\$1,243.00
108110F	Foam Filled Tire		\$363.56

POWER SPUR

The Power Spur is a mid-mount power rake designed to couple between your loader and an attachment. It works in line with most attachments.

The design allows operators to use the Power Spur on its own, or with an attachment connected adding both material handling efficiency and depth control.



- No tilt or angle
- Dual-motor design delivers 40% more torque and eliminates outside bearings and chains
- Standard skid steer mount
- Bolt on adapter plate allows you to add other attachments to the front of the power spur *(Buckets should be wider than the power spur rotor to eliminate ridges)*

	PS72	PS84
Dimensions (W x L x H)	79 x 20 x 25"	91 x 20 x 25"
Working Width	72"	84"
Overall Width	79"	91"
Suggested Bucket Width	78" – 84"	90 – 96"
Weight (lbs.)	720	770
Cont. PSI	3,000 MAX	3,000 MAX
Roto Speed	230-450 RPM	230-450 RPM
Hyd. GPM Range	18-30	18-30
Rotor Torque @2500 PSI	550 FT-LBS	550 FT-LBS

- | | | |
|-----------------|---|---|
| Options: | Wheel Attachment | Foam Filled Tires |
| | <ul style="list-style-type: none"> • Attaches to front of power spur to maintain depth • Adds approx. 17.5" to the overall length | <ul style="list-style-type: none"> • Uses the same tire as air filled • Weight 39 lbs. <i>(24 lbs. heavier than air filled)</i> |



ROTORAKE - SKID STEER

ROTO RAKE

The bi-directional rotor allows for operation in both directions with a 25 degree angle & 28 degree tilt for easy swaling & ditching. Oscillating gauge wheels lock in level position for 3 PT use. Dual-motor design delivers 40% more torque & eliminates outside bearings & chains.

The rotorake also features a floating rotor design with road-grade mini carbide teeth, ditch cutters and side shields. The RotoRake can be used on 3 PT hitch or skid steer.

When order HYDRAULIC TILT UNITS please chose a tilt and angle type as well as the appropriate wiring kit.



ITEMNUMBER	DESCRIPTION	WEIGHT	PRICE
RR48	48" Rotorake - Dual Motor Hydraulic Driven, Di-Directional Rotor, Manual Tilt/Manual Angle, Mini Skid Steer Mount		\$10,208.00
RR60	60" Rotorake - Dual Motor Hydraulic Driven, Bi-Directional Rotor, Manual Tilt/Manual Angle, Standard Skid Steer Mount		\$13,054.00
RR72	72" Rotorake - Dual Motor Hydraulic Driven, Bi-Directional Rotor, Manual Tilt/Manual Angle, Standard Skid Steer Mount	1100	\$13,963.00
RR84	84" Rotorake - Dual Motor Hydraulic Driven, Bi-Directional Rotor, Manual Tilt/Manual Angle, Standard Skid Steer Mount		\$14,918.00
RRSCK	Rotorake Side Cutters/Per Set		\$1,025.00

ROTORAKE SKID STEER OPTIONS

ON THE FLY TILT & ANGLE

ITEMNUMBER	DESCRIPTION	PRICE
RRHTAVK	Angle & Tilt On The Fly Kit - Choose Wiring Kit	\$5,291.00

WIRING KIT FOR ON THE FLY TILT & ANGLE

ITEMNUMBER	DESCRIPTION	PRICE
EWKV8ASV	Wiring Kit 8 Pin On-The-Fly Adjustments - ASV	\$681.00
EWKV14BO	Wiring Kit 14 Pin On-The-Fly-Adjustments - Bobcat	\$681.00
EWKV7BO	Wiring Kit 7 Pin On-The-Fly-Adjustments - Bobcat	\$2,551.00
EWKV14CNH	Wiring Kit 14 Pin On-The-Fly-Adjustments - Case/New Holland	\$681.00
EWKV14CAT	Wiring Kit 14 Pin On-The-Fly Adjustments - CAT/Takeuchi	\$681.00
EWKV8CAT	Wiring Kit 8 Pin On-The-Fly Adjustments - CAT	\$681.00
EWKV14GEHL	Wiring Kit 14 Pin On-The-Fly Adjustments - GEHL	\$681.00
EWKV14JCB	Wiring Kit 14 Pin On-The-Fly Adjustments - JCB/VOLVO	\$681.00
EWKV14JD	Wiring Kit 14 Pin On-The-Fly Adjustments - John Deere	\$681.00
EWKV14KU	Wiring Kit 14 Pin On-The-Fly-Adjustments - Kubota	\$681.00
EWKV14NH	Wiring Kit 14 Pin On-The-Fly Adjustments - New Holland	\$681.00
EWKV14WN	Wiring Kit 14 Pin On-The-Fly-Adjustments - Whacker Neuson	\$681.00
RRMTSV01	Wiring Kit On-The-Fly-Adjustments - Manual Toggle	\$1,270.00

STOP & GO TILT & ANGLE

ITEMNUMBER	DESCRIPTION	PRICE
RRTKHA	Angle & Tilt Cylinder Kit - Choose Wiring Kit	\$3,099.00
RRAKHA	Angle Cylinder Kit - Choose Wiring Kit	\$2,018.00



ROTORAKE - SKID STEER

ROTORAKE SKID STEER OPTIONS

STOP & GO TILT & ANGLE

WIRING KIT FOR STOP & GO TILT & ANGLE

ITEMNUMBER	DESCRIPTION	PRICE
EWKD8ASV	Wiring Kit 8 Pin Deutsch - ASV	
EWKD14BO	Wiring Kit 14 Pin Deutsch -Bobcat	\$482.00
EWKD7BO	Wiring Kit 7 Pin Deutsch - Bobcat	
EWKD14CNH	Wiring Kit 14 Pin Deutsch - Case/New Holland	\$482.00
EWKD14CAT	Wiring Kit 14 Pin Deutsch - CAT/GEHL	\$482.00
EWKD8CAT	Wiring Kit 8 Pin Deutsch - CAT	\$482.00
EWKD14JCB	Wiring Kit 14 Pin Deutsch - JCB/VOLVO	
EWKD14JD	Wiring Kit 14 Pin Deutsch - John Deere	\$482.00
EWKD14KU	Wiring Kit 14 Pin Deutsch - Kubota/Wacker Neuson	\$482.00
EWKD14TA	Wiring Kit 14 Pin Deutsch - Takeuchi	\$482.00
RRMTS01	Manual Toggle Switch Kit - For Rotorake Deutsch Plugs/Cig Lighter	\$435.00

ROTORAKE - 3 POINT HITCH

ITEMNUMBER	DESCRIPTION	WEIGHT	PRICE
RR60PTO18G	60" Rotorake - 540 PTO Driven Hyd System, Hyd Angle/Man Tilt, Cat I/II		\$18,914.00
RR72PTO18G	72" Rotorake - 540 PTO Driven Hyd System, Hyd Angle/Man Tilt, Cat I/II	1420	\$19,995.00
RR84PTO18G	84" Rotorake - 540 PTO Driven Hyd System, Hyd Angle/Man Tilt, Cat I/II		\$21,833.00
RRSCK3PH	Rotorake Side Cutters/Set		\$1,025.00
RRAK	Angle Cylinder & Hose Kit (Used On Tractor Remotes, Standard on PTO units)		\$454.00
RRTK	Tilt Cylinder & Hose Kit (Used On Tractor Remotes)		\$454.00



STUMP GRINDER

ITEMNUMBER	DESCRIPTION	PRICE
R25PD	3PH Stump Grinder - Direct PTO Drive	\$3,755.00
R25PS	3PH Stump Grinder - PTO Drive, Hyd Swing (2 Remotes)	\$7,546.00
R25PSV	3PH Stump Grinder - PTO Drive, Hydraulic Swing (Valve For Single Remote)	\$8,523.00

3PH Stump Grinder

A uniquely designed rotor sheds unnecessary weight increasing rotor acceleration helping to maximize available PTO horsepower. Utilizing carbide Wearsharp® carbide teeth, with their triangular shaped base allows them to be indexed 3 times tripling the already long-lasting wear life of the carbide. When combined with our proprietary rotor design, the result is increased acceleration and cutting performance.

- 540RPM PTO Input Speed
- 25" Rotor Size
- Tooth Construction (indexable 3x) – Carbide bolt into pocket
- 18 Teeth
- Slip Clutch Protection
- Quick Hitch Compatible
- 2.25" Cut Depth Per Pass
- 22" Cut Width Per Pass



1R25PS Model Shown



	R25PD Direct Drive	R25PS Hydraulic Swing
Recommended HP	20-45 HP	25-80 HP
Cutting Wheel Speed	540 RPM	1026 RPM
Cutting Height (above grade)	10"	20"
Cutting Height (below grade)	7"	6"
Swing Arc	0°	55°
Hitch	Cat I	Cat I & II
Hydraulic Remotes Required	No	1* or 2

*Requires optional valve to control both lift and swing functions.



STUMP GRINDER

Hydraulic Stump Grinders

ITEMNUMBER	DESCRIPTION	PRICE
R18HDMB1015G	Stump Grinder 18" Rotor - Hydraulic Direct, 10-15GPM, MINI BOBCAT Mount	\$3,948.00
R18HDMS1015G	Stump Grinder 18" Rotor - Hydraulic Direct, 10-15GPM, MINI SSL Mount	\$3,825.00
R18HDSK1520G	Stump Grinder 18" Rotor - Hydraulic Direct, 10-20GPM, SSL Mount	\$4,088.00
R25HDSK1620G	Stump Grinder 25" Rotor - Hydraulic Direct, 16-20GPM, SSL Mount	\$5,828.00
R25HSSK1620G	Stump Grinder 25" Rotor - Hydraulic Swing, 16-20GPM, SSL Mount	\$8,451.00
R25HDSK2026G	Stump Grinder 25" Rotor - Hydraulic Direct, 20-26GPM, SSL Mount	\$6,179.00
R25HDSK2738P	Stump Grinder 25" Rotor - Hydraulic Direct, 27-38GPM, SSL Mount	\$6,266.00
R25HSSK2026G	Stump Grinder 25" Rotor - Hydraulic Swing, 20-26GPM, SSL Mount	\$8,539.00
R25HSSK2738P	Stump Grinder 25" Rotor - Hydraulic Swing, 27-38GPM, SSL Mount	\$9,853.00

Hydraulic Stump Grinder

Direct drive and hydraulic swing models available.



	R18HD	R25HD/HS
Rotor Diameter	18"	25"
Wheel Thickness	1/2"	3/4"
# of Teeth	10 Green Teeth	18 Green Teeth
Swing Angle	N/A	53 Degree (40-1/4" of travel) HS Models only Adjustable stabilizing feet – HS Models only

STUMP GRINDER OPTIONS

ITEMNUMBER	DESCRIPTION	PRICE
STGV	R25PS Valve Option - Includes Hoses, No Cylinders	\$1,520.00
700LPA	WearSharp Tooth - Carbide Teeth	\$21.05
700LPR	WearSharp Tooth - Carbide Teeth	\$21.05
700LPS	WearSharp Tooth - Carbide Teeth	\$21.05
700WS	WearSharp Tooth - Carbide Teeth	\$28.04
LP214	WearSharp Tooth - Carbide Teeth	\$5.78
700WS25KIT	WearSharp Teeth Kit - 25 Piece	\$491.00
500NUT	Nut For WearSharp Teeth	\$2.00
700SPACER	Spacer For 700-WearSharp Teeth	\$3.00
134770AA	Hose Protector Shield - For R18HD Models	\$114.00
134771AA	Hose Protector Shield - For R25HD Models	\$123.00
134780AA	Hose Protector Shield - For R25HS Models	\$128.00
134868AA	Bi-Directional Wheel - For R25HS Models	\$526.00



MULTI-PACKER - LAWN ROLLER

MULTI-PACKER

ITEMNUMBER	DESCRIPTION	WEIGHT	PRICE
MP36	36" Multi-Packer - 24" Diameter Roller Steel Drum, CAT I & II	560	\$4,647.00
MP48	48" Multi-Packer - 24" Diameter Roller Steel Drum, CAT I & II	610	\$4,942.00
MP60	60" Multi-Packer - 24" Diameter Roller Steel Drum, CAT I & II	710	\$5,275.00
MP72	72" Multi-Packer - 24" Diameter Roller Steel Drum, CAT I & II	815	\$5,696.00
MP84	84" Multi-Packer - 24" Diameter Roller Steel Drum, CAT I & II	885	\$6,178.00
MP96	96" Multi-Packer - 24" Diameter Roller Steel Drum, CAT I & II	1025	\$6,953.00

MULTI-PACKER OPTIONS

ITEMNUMBER	DESCRIPTION	PRICE
MG012	Ripper Teeth	\$45.00
MPTH	Tow Hitch / Draw Bar	\$755.00
EAC200AS	Electric Actuator 200MM Stroke For Multigroomer	\$1,661.00
MG011MP	Ripper Tooth - For Multipacker	\$39.00
MPLB36	36" Leveling Blade	\$972.00
MPLB48	48" Leveling Blade	\$993.00
MPLB60	60" Leveling Blade	\$1,096.00
MPLB72	72" Leveling Blade	\$1,207.00
MPLB84	84" Leveling Blade	\$1,351.00
MPLB96	96" Leveling Blade	\$1,482.00

MULTI-PACKER

The heavy duty, multi-packer is available in 3 PH or as a towable roller. This versatile packer can be used for equestrian riding arenas, lawn rolling or field packing.

- Available in 36" to 96" widths.
- Slots for optional ripper teeth
- Floating drum scraper
- 24" diameter steel drum
- Drum can be filled with water for increased compaction
- Storage stand
- Mounts for optional leveling blade
- CAT I or II Hitch





LANDSCAPER

TRAILPRO

ITEMNUMBER	DESCRIPTION	WEIGHT	PRICE
TP50	50" Trailpro - 540 RPM PTO Driven, Hyd Top Link Included		\$24,417.00
TP60	60" Trailpro - 540 RPM PTO Driven, Hyd Top Link Included	1300	\$24,797.00
TP72	72" Trailpro - 540 RPM PTO Driven, Hyd Top Link Included	1475	\$25,147.00
TP96	96" Trailpro - 540 RPM PTO Driven, Hyd Top Link Included		\$31,594.00
TP50RR	50" Rear Roller Attachment For Trailpro 50		\$2,279.00
TP60RR	60" Rear Roller Attachment For Trailpro		\$2,345.00
TP72RR	72" Rear Roller Attachment For Trailpro		\$2,410.00
TP96RR	96" Rear Roller Attachment For Trailpro		\$2,647.00

TRAILPRO

Groom and reclaim your trails faster with one machine, one operator, and one pass. The 3-in-1 heavy-duty implement for municipal trail maintenance.

Unique edging disc removes grass and weeds from side of trails and cuts down to the root ball. The disc reclaims gravel and stone dust that has built up along the edge of the trails and redistributes it across the trail. Eliminating the need for costly re-gravelling while creating a clean, trimmed edge.



- CAT I Hitch
- Angled blades remove high spots while leveling.
- Spinning rotor pulverizes & separates root balls & stone dust
- Carbine-tipped teeth spin at 540 RPM
- Leveling plate made from 3/4" wear resistant steel compacts the product leaving a smooth trail

MULTI-PACKER - LAWN ROLLER

LAWN ROLLER

ITEMNUMBER	DESCRIPTION	WEIGHT	PRICE
LR30	30" Wide Self Propelled Lawn Roller Hydrostatic Drive, 5.5HP Honda Engine	480	\$9,215.00
117662R	Checker Plate Upgrade		\$163.00
ROA	Ride On Attachment For LR30 Roller		\$2,661.00

Easily move the self-propelled walk-behind lawn roller manually in forwards and reverse or by engaging the 5.5 HP Honda gasoline engine. The Eaton hydrostatic transmission delivers power to the drum with a series of sprockets, jack shaft and chains.

- 400 lbs. of water can be added to the drum for extra compaction
- Extra-large handle makes the unit easy to turn and move
- Self-propelled, leaving no tire or tread marks
- Main drum: 30" wide x 24" diameter
- Overall dimensions: 35" wide x 62" long x 45" high





QUESTRIAN EQUIPMENT

MULTIGROOMER PONY

ITEMNUMBER	DESCRIPTION	PRICE
MGP48	48" Multigroomer Pony	\$4,849.00
MGP60	60" Multigroomer Pony	\$5,374.00
MGP72	72" Multigroomer Pony	\$6,412.00
MGP84	84" Multigroomer Pony	\$6,962.00

MULTIGROOMER PONY OPTIONS

ITEMNUMBER	DESCRIPTION	PRICE
3PHSWLCATIPONY	22 Degree Swivel Hitch - CATI, 3PH	\$2,620.00
MGPTH	Tow Hitch	\$649.00
MGPWKIT	Rear Wheel Kit - For Multigroomer Pony	\$928.00
EAC200ASMGP	Electric Actuator 200MM Stroke - For Multigroomer Pony	\$1,661.00
MGP01	Ripper Tooth - For Pony	\$33.00
MGPLB48	48" Leveling Blade - Pony Models	\$517.00
MGPLB60	60" Leveling Blade - For Pony Models	\$591.00
MGPLB72	72" Leveling Blade - For Pony Models	\$662.00
MGPLB84	84" Leveling Blade - For Pony Models	\$733.00

THE MULTI-GROOMER PONY is designed to tow behind UTV's or mount any small utility tractors 3PH. It renovates and conditions conventional and synthetic footing on horse-riding arenas. The unique design features side rub rails and an aggressive double row of ripper teeth offset with 4" spacing. The rear two rows of spring tines are offset and the pitch and height can be adjusted with a manual ratchet jack or an optional hydraulic cylinder. The spring tines give an ultimate mixing effect of the surface. The rear bar roller pulverizes and packs to the desired density, leaving an attractive patterned finish.

Models available in 48", 60", 72", 84"



MULTIGROOMER

ITEMNUMBER	DESCRIPTION	PRICE
MG48	48" Multigroomer	\$6,229.00
MG60	60" Multigroomer	\$6,596.00
MG72	72" Multigroomer	\$7,352.00
MG80	80" Multigroomer	\$8,085.00
MG96	96" Multigroomer	\$9,258.00
MG120	120" Multigroomer	\$12,353.00
MG60LA	60" Multigroomer W/ Hydraulic Lift Axle	\$8,513.00
MG72LA	72" Multigroomer W/ Hydraulic Lift Axle	\$9,153.00
MG80LA	80" Multigroomer W/ Hydraulic Lift Axle	\$9,884.00
MG96LA	96" Multigroomer W/ Hydraulic Lift Axle	\$10,727.00
MG120LA	120" Multigroomer W/ Hydraulic Lift Axle	\$15,225.00



EQUESTRIAN EQUIPMENT

MULTIGROOMER

MULTIGROOMER OPTIONS

ITEMNUMBER	DESCRIPTION	PRICE
3PHSWLCATIMG	22 Degree Swivel Hitch - 3PH, CATI	\$2,620.00
3PHSWLCATIIMG	22 Degree Swivel Hitch - CAT II, 3PH	\$3,814.00
MGTH	Tow Hitch - Heavy Duty, Adjustable For Multigroomer	\$755.00
MG011	Ripper Tooth For Multigroomer 96	\$43.92
MGBS	Board Scraper - Multigroomer	\$957.00
MGLB48	48" Leveling Blade For Multigroomer	\$545.00
MGLB60	60" Leveling Blade For Multigroomer	\$610.00
MGLB72	72" Leveling Blade For Multigroomer	\$717.00
MGLB80	80" Leveling Blade For Multigroomer	\$758.00
MGLB96	96" Leveling Blade For Multigroomer	\$793.00
MGLB120	120" Leveling Blade For Multigroomer	\$1,013.00
MG7148	Smooth Roller W/Water Tank - For 48" Multigroomer	\$1,840.00
MG7160	Smooth Roller W/Water Tank - For 60" Multigroomer	\$1,950.00
MG7172	Smooth Roller W/Water Tank - For 72" Multigroomer	\$2,054.00
MG7180	Smooth Roller W/Water Tank - For 80" Multigroomer	\$2,275.00
MG7196	Smooth Roller W/Water Tank - For 96" Multigroomer	\$2,520.00
MGDPS60	Drag Packer/Sealer - For 60" Multigroomer	\$5,402.00
MGDPS72	Drag Packer/Sealer - For 72" Multigroomer	\$5,499.00
MGDPS80	Drag Packer/Sealer - For 80" Multigroomer	\$5,774.00
MGDPS96	Drag Packer/Sealer - For 96" Multigroomer	\$6,119.00
MGDPS120	Drag Packer/Sealer - For 120" Multigroomer	\$12,210.00
MGRIP96	96" Wide Ripper Attachment CAT II	\$8,179.00

The Multi-Groomer renovates and conditions conventional and synthetic footings on horse-riding arenas and tracks. The unique design features heavy duty side rub rails. An aggressive double row of adjustable ripper teeth are offset and have a spacing of 4" as well as a working depth of up to 4". The rear 2 rows of spring tines are offset and the pitch and height can be adjusted with a manual ratchet rack or an optional hydraulic cylinder. The spring tines give an ultimate mixing effect of the surface. The rear bar roller pulverizes and packs to the desired density, and leaves an attractive patterned finish.



	MG48	MG60	MG72	MG80	MG96	MG120
Working Width	48"	60"	72"	80"	96"	120"
Working Depth	4"	4"	4"	4"	4"	4"
Hitch	CAT1	CAT1	CAT1	CAT1	CAT2	CAT2
Weight	580	690	750	875	945	1500
Dimensions	49"W x 68"D x 34"H	61"W x 68"D x 34"H	73"W x 72"D x 34"H	81"W x 72"D x 34"H	97"W x 72"D x 34"H	121"W x 72"D x 34"H
Tires	16.5 x 6.5 - 8	16.5 x 6.5 - 8	20.5 x 8.0 - 10	20.5 x 8.0 - 10	20.5 x 8.0 - 10	20.5 x 8.0 - 10
# of Ripper Teeth (Adjustable)	11	15	19	19	23	31
Rear Bar Roller	12.75" dia	12.75" dia	12.75" dia	12.75" dia	12.75" dia	12.75" dia
HP Requirement	15 - 40	20 - 40	25 - 70	30 - 100	30 - 100	50 - 120



EQUESTRIAN EQUIPMENT

ROTOGROOMER

ITEMNUMBER	DESCRIPTION	PRICE
PTORG72	72" Rotogroomer - CAT I, 540 RPM	\$12,276.00
PTORG96	96" Rotogroomer - CAT II, 540 RPM	\$15,586.00

ROTOGROOMER OPTIONS

ITEMNUMBER	DESCRIPTION	PRICE
3PHSWLCATIRG	22 Degree Swivel Hitch - CAT I	\$2,620.00
3PHSWLCATIIRG	22 Degree Swivel Hitch - CAT II	\$3,814.00
RGFSS	Floating Spill Shield Kit-Rotogroom 1 Sheild Plate For Each Side	\$844.00
RGBS	Board Scraper For Rotogroomer	\$957.00
PTORG72RIP	72" Ripper Bar For Rotogroomer	\$2,588.00
PTORG96RIP	96" Ripper Bar For Rotogroomer	\$3,042.00

THE PTO DRIVEN ROTOGROOMER

renovates and conditions conventional and synthetic footings with high wax and fiber materials in horse-riding arenas. It is the only solution on those footings when a conventional drag will bunch or plug up.

- Carbide toothed single direction drive rotor
- PTO Driven 540 RPM with slip clutch protection
- 12" rear smooth packing roll with self-adjusting scraper
- Water can be added to rear packer roll for extra weight



	PTORG72	PTORG96
HP	20-80	40-80
Working Width	72"	96"
Height	30"	30"
Weight	800 lbs	1000 lbs
Hitch	CAT I	CAT II
Drum Speed	200 RPM	200 RPM

IRON ANT

ITEMNUMBER	DESCRIPTION	PRICE
IRONANT	Self-Propelled Lifter/Mover - 1200 lb. Capacity, Battery Powered	\$5,399.00
120594	Pallet Fork Kit For Iron Ant	\$543.00

IRON ANT

Designed to move compactor plates on an off trucks the Iron Ant can also lift just about anything from landscape rocks, tree balls, pavers and various other building materials.

The Iron Ant is powered by two high torque drills (not included) which power the shafts providing full four-wheel drive and skid steer like operation.





TREE PULLER

ITEMNUMBER	DESCRIPTION	WEIGHT	PRICE
TRP2814	14" Tree Puller - 10GPM Minute, SSL Mount	350	\$3,168.00
TRPGF	Push Bar - For TRP2814 Models		\$610.00
TRPGR	Debris Screen (REQUIRES PUSH BAR) - For TRP2814 Models		\$285.00

Tree Puller

Featuring a 28-inch single pivoting jaw capable of opening to 14 inches wide, the TRP2814 is a versatile tool for arborists, farmers, landscapers, and anyone looking to remove brush and trees. The open plate design offers superior operator visibility, while the push bar keeps branches safely away from the cab. It's the perfect combination of quality, affordability and functionality.

Serrated teeth make for a strong hold and quick work of stumps, roots, and entire trees while allowing for the operator to shake out excess dirt for refilling holes.



SPECIFICATIONS

Max Jaw Opening	14"
Jaw Material	½" AR400
Max. Cylinder Force	21,000 LBS
Cylinder Diameter	3"
Greasable Jaw Pivot Pins	1.5"
Overall Width / Length / Height	51.25" x 35.25" x 20.5"
Machine Weight	350 LBS
Max Continuous Operating Pressure (PSI)	3,000 (PSI)
Minimum GPM	10

OPTIONS

Push Bar Guard

The bolt on guard provides protection for your power unit as well as helps manage the load



Guard Insert

The guard insert option adds additional protection reducing the amount of poke through from branches and brush.



Requires Push Bar Guard Option